

# Introduction of the Director Delaware Geological Survey



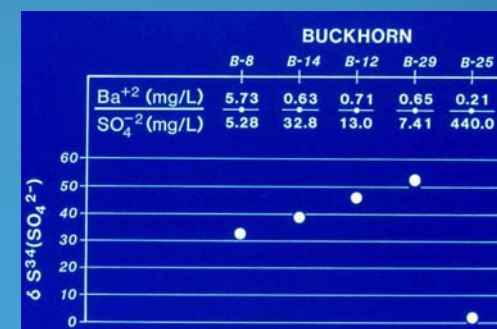
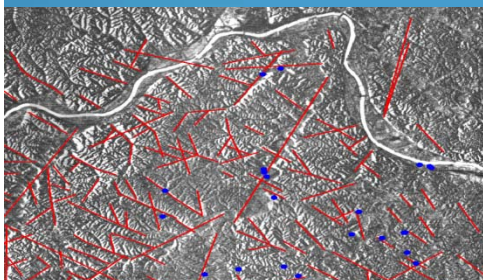
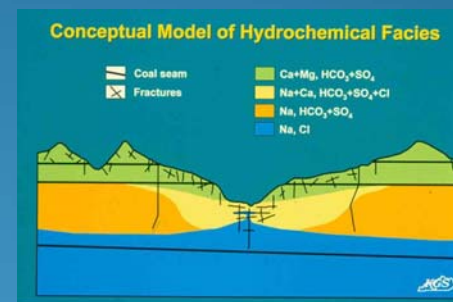


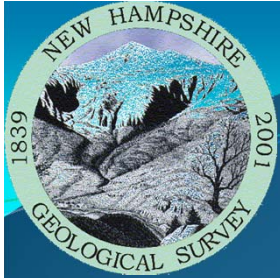
## Career Background:

- 15 Years at Kentucky Geological Survey
- Research Hydrogeologist
- Coordinator, Coal Field Hydrology Program
- Adjunct professor at UK

## • Research Interests:

- Groundwater geochemistry
- Mine hydrology
- Geotechnical and natural hazards
- Groundwater monitoring
- Remote sensing/groundwater exploration





# Career Background:

- 10 Years at New Hampshire Geological Survey
- State Geologist and Director
- Adjunct at UNH; visiting scholar at Dartmouth
- Research Interests:
  - Groundwater geochemistry
  - Natural hazards mitigation
  - Groundwater monitoring
  - Earth science education

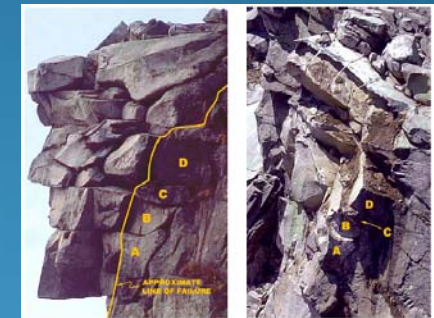
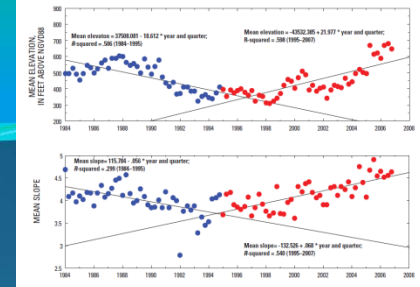
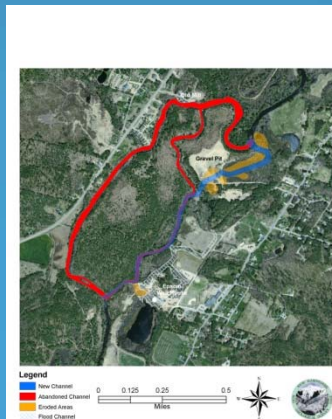
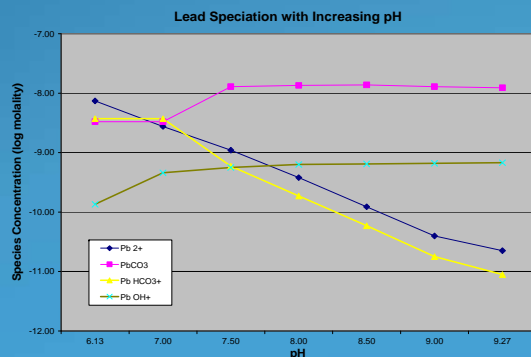


FIGURE 9. Profile's rock mass before (left) and after collapse (right) showing extent of topping failure. New Portland number 10 in both photographs. (2001, Associated Press-Lin Cole; 1003, Uicua Leader Corp., respectively)



## National Ground Water Association

- One year as Director of Science and Technology
- Chief Science Counsel
- NGWA UNESCO rep

### Issues:

- Hydraulic Fracturing (fracking)
- Geothermal heat pump legislation
- Groundwater monitoring
- Continuing education for professionals

## Other Activities:

- AGI Congressional Science Fellow 1998/99
- Served on National Academy of Science/NRC committees
- Leadership positions in AASG, AGI, NGWA
- Federal Advisory Committees (ACWI: NWQMC, SOGW; NCGMP (Statemap)
- Testimony before U.S. Senate



# Update on the National Ground Water Monitoring Network Effort and Pilot Projects

Presented By

David R. Wunsch  
Subcommittee on Ground Water  
Network Design Work Group  
National Water Quality Monitoring Council  
AASG Water Committee Co-chair

June 27, 2010



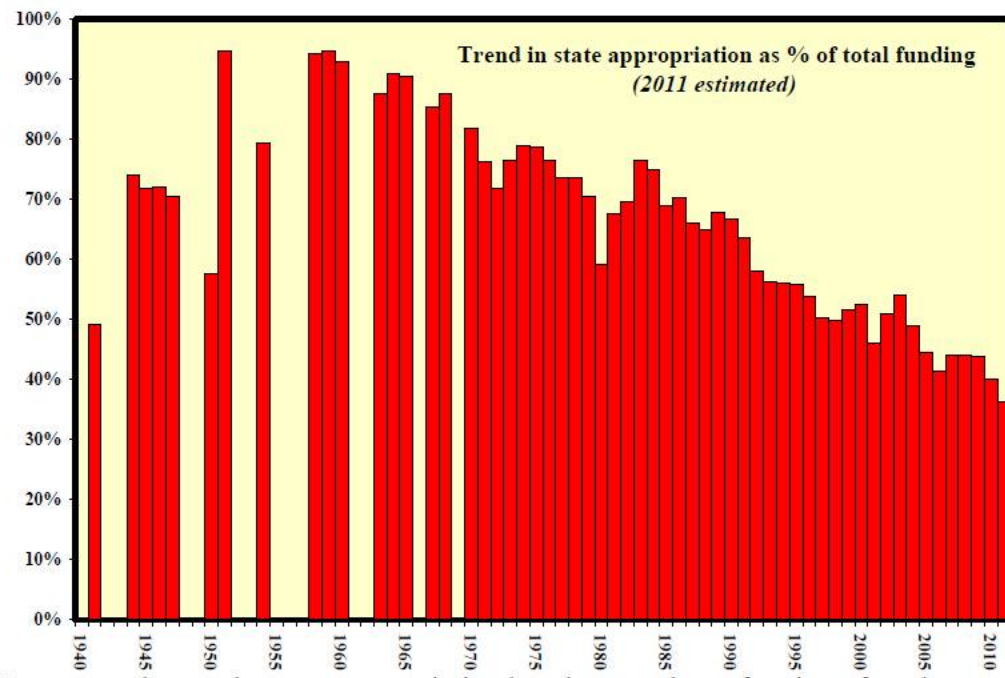
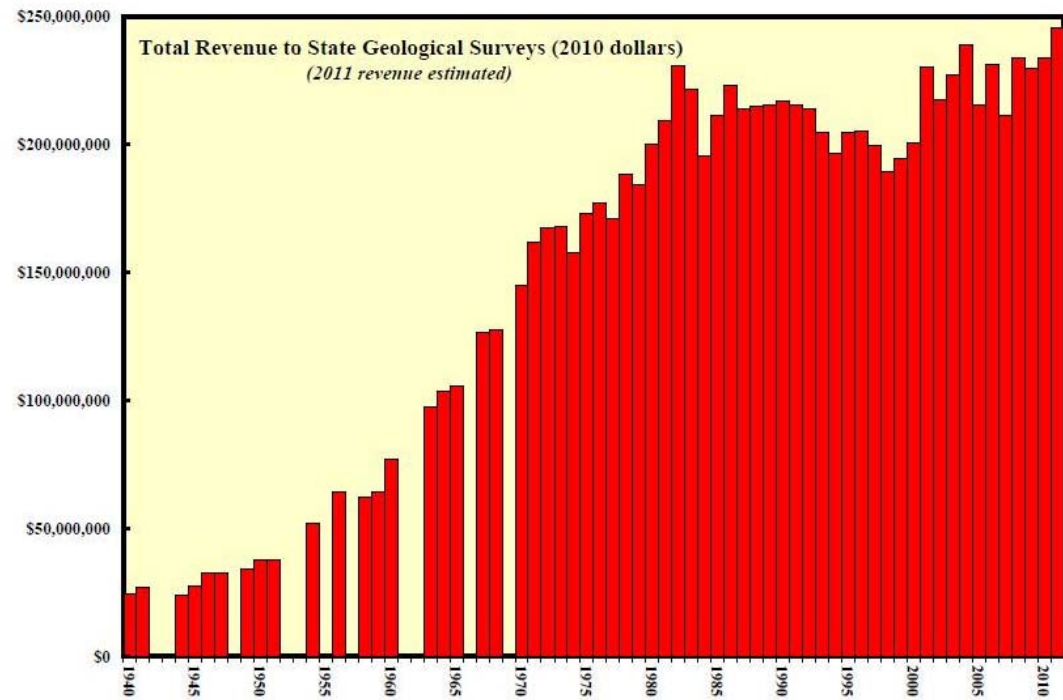


# **Association of American State Geologists (AASG)**

- **The first state survey was established in 1823 in North Carolina**
- **The State Geologists began meeting with USGS in 1879; same years USGS was established**
- **Formally established as AASG in 1908**
- **AASG is an Association of the chief executives of the 50 state surveys and Puerto Rico**



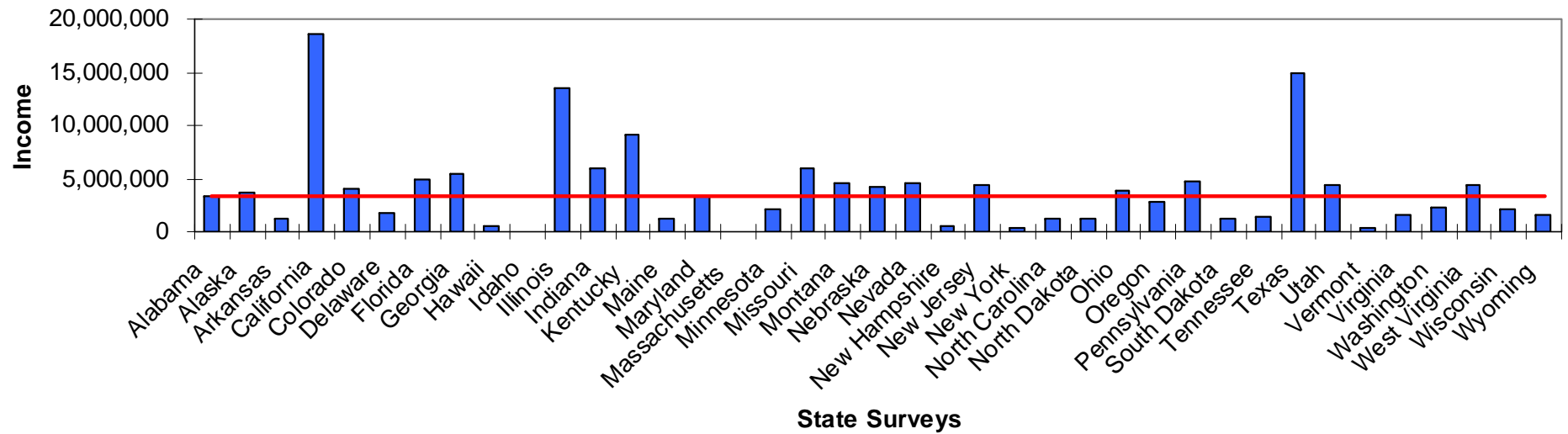




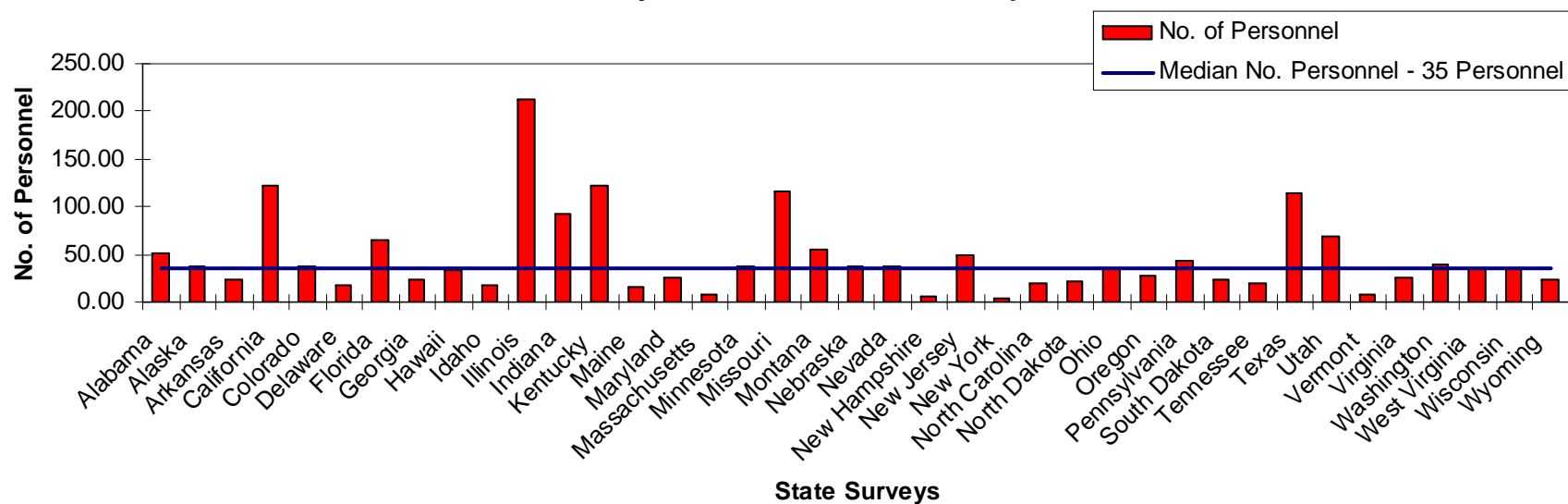


## State Surveys Income Comparison

Annual Income  
Median Income \$3.3 Million



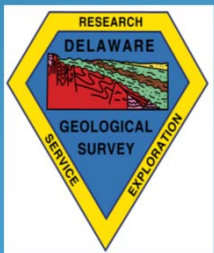
**State Surveys - No. of Personnel Comparison**



# Delaware Geological Survey

---

- Publications
  - Data Resources
  - Research
  - Advisory Committees
  - Consultation
  - Coordinate USGS
- Activities for the State





# Delaware Geological Survey

---

## Future Efforts and Directions:

- Continued efforts on Research Program
- Web-based data dissemination
- Groundwater monitoring
- Hazards and mitigation
- Derivative products

