

ORDINANCE NO. 2025-09-22-02

AN ORDINANCE OF THE CITY OF PRINCETON APPROVING THE 2025-2026 ANNUAL UPDATE TO THE SERVICE AND ASSESSMENT PLAN AND ASSESSMENT ROLL FOR WINCHESTER PUBLIC IMPROVEMENT DISTRICT NUMBER TWO INCLUDING THE COLLECTION OF THE 2025-2026 ANNUAL INSTALLMENTS

WHEREAS, the City of Princeton (the “City”) has created the Winchester Public Improvement District Number Two (the “PID”) in accordance with the requirements of Section 372.005 of the Public Improvement District Assessment Act (the “Act”); and

WHEREAS, the City Council has approved and accepted the Service and Assessment Plan for Winchester Public Improvement District Number Two in conformity with the requirements of the Act and adopted the assessment ordinance, which assessment ordinance approved the assessment roll and levied the assessments on property within the PID; and

WHEREAS, pursuant to Section 371.013 of the Act, the Service and Assessment Plan must cover a period of at least five years and must also define the annual indebtedness and projected costs for improvements and such Service and Assessment Plan must be reviewed and updated annually for the purpose of determining the annual budget for improvements; and

WHEREAS, the City requires that an update to the Service and Assessment Plan and the Assessment Roll for Winchester Public Improvement District Number Two for 2025-2026 (the “Annual Service Plan Update”) be prepared, setting forth the annual budget for improvements and the annual installment for assessed properties in Winchester PID Number Two, and the City now desires to approve such Annual Service and Assessment Plan Update.

NOW, THEREFORE, BE IT ORDAINED BY THE CITY COUNCIL OF THE CITY OF PRINCETON, TEXAS, THAT:

Section 1. Findings. The findings and determinations set forth in the preambles hereto are hereby incorporated by reference for all purposes.

Section 2. Terms. Terms not otherwise defined herein are defined in the City of Princeton, Winchester Public Improvement District Number Two Annual Service and Assessment Plan Update attached hereto as *Exhibit A*.

Section 3. Approval of Update. The 2025-2026 Annual Service and Assessment Plan Update for the Winchester Public Improvement District Number Two is hereby approved and accepted by the City Council.

Section 4. Severability. If any provision, section, subsection, sentence, clause or phrase of this ordinance, or the application of same to any person or set of circumstances is for any reason held to be unconstitutional, void or invalid, the validity of the remaining portions of this ordinance or the application to other persons or sets of circumstances shall not be affected thereby, it being the intent of the City Council that no portion hereof, or provision or regulation contained herein shall become inoperative or fail by reason of any unconstitutionality, voidness or invalidity of any other portion here, and all provisions of this ordinance are declared to be severable for that purpose.

Section 5. Effective Date. This ordinance shall take effect from and after its final date of passage, and it is accordingly so ordered.

PASSED, APPROVED AND EFFECTIVE this September 22, 2025.

Eugene Edwards SR

Mayor

ATTEST:

[Signature]

City Secretary



EXHIBIT A

**2025-2026 Annual Service and Assessment Plan
Update**

**WINCHESTER No. 2
PUBLIC IMPROVEMENT DISTRICT**

CITY OF PRINCETON, TEXAS



PRINCETON
TEXAS

**ANNUAL SERVICE PLAN UPDATE
2025-26**

**AS APPROVED BY CITY COUNCIL ON:
AUGUST 25, 2025**

PREPARED BY:
MUNICAP, INC.
— PUBLIC FINANCE —

600 E. JOHN CARPENTER FREEWAY, SUITE 150

IRVING, TX 75062

TEL: (469) 490-2800

TOLL-FREE: (866) 648-8482

EMAIL: TXPID@MUNICAP.COM

WINCHESTER NO. 2 PUBLIC IMPROVEMENT DISTRICT

ANNUAL SERVICE PLAN UPDATE – 2025-26

TABLE OF CONTENTS

I.	INTRODUCTION	1
II.	UPDATE OF THE SERVICE PLAN.....	2
A.	PID INDEBTEDNESS – SOURCES AND USES OF AUTHORIZED IMPROVEMENTS	2
B.	PROJECTED COSTS OF AUTHORIZED IMPROVEMENTS	3
C.	ANNUAL BUDGET	5
D.	FIVE YEAR SERVICE PLAN.....	6
E.	PID ASSESSMENT NOTICE	7
F.	BOND REDEMPTION RELATED UPDATES.....	7
III.	UPDATE OF THE ASSESSMENT PLAN.....	9
A.	ALLOCATION OF BUDGETED COSTS	9
B.	CALCULATION OF ASSESSMENTS.....	10
IV.	UPDATE OF THE ASSESSMENT ROLL	11
A.	PARCEL UPDATES.....	11
B.	PREPAYMENT OF ASSESSMENTS	12
	APPENDIX A - PID MAP, LEGAL DESCRIPTIONS, AND CONCEPT PLANS	
	APPENDIX B - ASSESSMENT ROLL SUMMARY - 2025-26	
	APPENDIX C - FINAL PLATS	
	APPENDIX D - PID ASSESSMENT NOTICE	

I. INTRODUCTION

The Winchester Public Improvement District No. 2 (the "PID") was created by Resolution No. 2020-10-26-R-01 adopted by the City Council of the City of Princeton (the "City Council") on October 26, 2020 in accordance with Chapter 372 of the Texas Local Government Code (the "PID Act") to finance and/or reimburse the Authorized Improvements Cost for the benefit of the property in the PID.

On May 23, 2022, the City of Princeton (the "City") approved issuance of the City of Princeton, Texas Special Assessment Revenue Bonds, Series 2022 (Winchester Public Improvement District No. 2) (the "Bonds") in the aggregate principal amount of \$13,434,000 to finance, refinance, provide or otherwise assist in the acquisition, construction and maintenance of the public improvements provided for the benefit of the property in the PID. The Bonds are secured by the PID Assessments (the "Assessments").

A service and assessment plan originally dated May 23, 2022 and most recently updated for the issuance of Bonds on June 27, 2022 (the "Updated Service and Assessment Plan") was prepared at the direction of the City identifying the public improvements (the "Authorized Improvements") to be provided by the PID, the costs of the Authorized Improvements, the indebtedness to be incurred for the Authorized Improvements, and the manner of assessing the property in the PID for the costs of the Authorized Improvements. Pursuant to the PID Act, the Updated Service and Assessment Plan must be reviewed and updated annually. This document is the annual update of the Updated Service and Assessment Plan for 2025-26 (the "Annual Service Plan Update") pursuant to Sections 372.013, 372.014, and 372.016 of the PID Act.

The City also adopted Assessment Rolls identifying the assessments on each Parcel within the PID, based on the method of assessment identified in the Updated Service and Assessment Plan. This Annual Service Plan Update also updates the Assessment Roll for 2025-26.

The PID Act, as amended, requires, among other things, (i) all Service and Assessment Plans and Annual Service Plan Updates be approved through ordinance or order to be filed with the county clerk of each county in which all or part of the PID is located within seven days and (ii) include a copy of the notice form required by Section 5.014 of the Texas Property Code (the "PID Assessment Notice") as disclosure of the obligation to pay PID Assessments. This Annual Service Plan Update includes a copy of the PID Assessment Notice as Appendix D and copy of this Annual Service Plan Update will be filed with the county clerk in each county in which all or a part of the PID is located not later than seven (7) days after the date the governing body of the City approves this Annual Service Plan Update.

Capitalized terms shall have the meanings set forth in the Updated Service and Assessment Plan unless otherwise defined herein.

II. UPDATE OF THE SERVICE PLAN

Pursuant to Section 372.013 of the PID Act, the Service Plan must:

- (i) define the annual indebtedness and the projected costs for the improvements,
- (ii) cover a period of at least five (5) years, and
- (iii) include a copy of the notice form required by Section 5.014 of the Texas Property Code.

The governing body of the municipality or county shall review and update the service plan annually for the purpose of determining the annual budget for improvements.

A. PID INDEBTEDNESS - SOURCES AND USES FOR AUTHORIZED IMPROVEMENTS

The sources and uses of funds for the Bonds are presented below in Table II-A-1 as shown in the Updated Service and Assessment Plan.

According to Collin County Clerk online records, the final plat for Phase 5 was recorded on December 22, 2021, the final plat for Phase 6 was recorded on May 4, 2022, the final plat for Phase 7 was recorded on July 27, 2022, and the final plat for Phase 8 was recorded on January 28, 2022.

Table II-A-1
Sources and Uses of Funds¹

Sources or Uses	Total
Sources of Funds	
Bond Proceeds	\$13,434,000
Total Sources	\$13,434,000
Uses of Funds	
Public infrastructure	\$11,460,000
Debt service reserve	\$898,388
Capitalized interest	\$0
Costs of Issuance	\$652,592
Underwriter's discount	\$403,020
Administrative fund	\$20,000
Total Uses of Funds	\$13,434,000

¹ - According to information provided in Winchester PID No. 2 2024-25 Service and Assessment Plan Update.

B. PROJECTED COSTS OF THE AUTHORIZED IMPROVEMENTS

Description of the Authorized Improvements

Pursuant to the Updated Service and Assessment Plan, the Authorized Improvements consist of the on-site Public Infrastructure necessary for the development of the PID. The Authorized Improvements include, but are not limited to, the following:

- Road improvements, including but not limited to, subgrade, paving, ramps, sidewalks, curbs, streetlights and poles, signs, testing, and bonds;
- Water facilities, including but not limited to, lines, valves, fittings, fire hydrants, testing, bonds, and all other works, equipment, and services for the transmission of water;
- Sanitary sewer facilities, including but not limited to, lines, manholes, testing, bonds, and all other works, equipment, and services for the collection and transportation of wastewater;
- Storm drainage improvements, including but not limited to, storm drain lines and pipes, inlets, manholes; headwalls, rip rap, detention pond grading, outlet, and grassing, testing, bonds, and all other works, equipment, and services for the collection, detention, and transportation of storm water;
- Erosion control; and
- City, professional, and other fees, including but not limited to, plan check and inspection fees, geotechnical and environmental services, and engineering and surveying

According to the Bonds' Limited Offering Memorandum, the construction of the Authorized Improvements has been completed. The Budgeted Costs of the Authorized Improvements, including PID creation and costs related to the Bonds, Perimeter Improvements Cost, Additional Public Improvements, and Private Improvements Cost, as shown the Updated Service and Assessment Plan, are shown in Table II-B-1 on the following page.

(the remainder of this page is intentionally left blank)

Table II-B-1
Budgeted Costs of the Authorized Improvements¹

Improvement Description	Authorized Improvements	Perimeter Improvements	Additional Public Improvements	Private Improvements	Total
<i>Soft Costs</i>					
Planning, Survey, Engineering, Staking	\$2,044,118	\$509,065	\$0	\$1,250,352	\$3,803,535
<i>Hard Costs</i>					
Excavation	\$0	\$0	\$0	\$3,429,902	\$3,429,902
Erosion Control	\$368,500	\$0	\$0	\$0	\$368,500
Paving	\$5,568,321	\$2,645,965	\$0	\$0	\$8,214,286
Drainage / Detention Ponds	\$2,608,470	\$0	\$0	\$0	\$2,608,470
Water	\$1,931,588	\$182,172	\$0	\$0	\$2,113,760
Sanitary Sewer	\$1,913,340	\$0	\$0	\$0	\$1,913,340
Franchise Utilities	\$0	\$0	\$0	\$620,500	\$620,500
Retaining Walls	\$0	\$0	\$0	\$737,000	\$737,000
Entry Feature	\$0	\$0	\$0	\$0	\$0
Amenity Center	\$0	\$0	\$0	\$1,598,623	\$1,598,623
Screening / Buffer	\$0	\$0	\$0	\$3,029,153	\$3,029,153
Open Space	\$0	\$0	\$0	\$1,004,429	\$1,004,429
Contingency	\$903,681	\$333,721	\$0	\$1,166,995	\$2,404,397
Total Hard + Soft Costs	\$15,338,018	\$3,670,923	\$0	\$12,836,954	\$31,845,895
<i>Total Assessed Hard + Soft Costs</i>	<i>\$11,460,000</i>	<i>\$0</i>	<i>\$0</i>	<i>\$0</i>	<i>\$11,460,000</i>
<i>PID Bonds Related Costs</i>					
Debt Service Reserve	\$898,388	\$0	\$0	\$0	\$898,388
Capitalized Interest	\$0	\$0	\$0	\$0	\$0
Costs of Issuance	\$652,592	\$0	\$0	\$0	\$652,592
Underwriter's Discount	\$403,020	\$0	\$0	\$0	\$403,020
Administrative Fund	\$20,000	\$0	\$0	\$0	\$20,000
Principal Assessed	\$13,434,000	\$0	\$0	\$0	\$13,434,000

1 - According to information provided in Winchester PID No. 2 2024-25 Service and Assessment Plan Update

C. ANNUAL BUDGET

Pursuant to Sections 372.017 and 372.018 of the PID Act, the City may provide that the Assessments be paid in periodic installments and may bear interest at the rate specified by and beginning at the time or times or on the occurrence of one or more events specified by the City Council in an Assessment Ordinance. Such installments must (i) be in amounts necessary to retire the indebtedness on the improvements and (ii) continue for the period approved by the City Council for the payment of the installments. The City Council has determined that the Assessments shall be collected in installments corresponding in number to the annual installments of principal, including mandatory sinking fund payments, on the Bonds and bear interest at the actual interest rate on the Bonds plus the Additional Interest Rate.

Each Parcel's Annual Installment, as defined in the Updated Service and Assessment Plan, shall include an annual installment of interest and principal in proportionate amount to the corresponding annual installment of interest and principal on the applicable Bonds, the Additional Interest, and a proportionate share, based on such Parcel's outstanding Assessment, of the Administrative Expenses. Such Annual Installments may be reduced by available funds held in trust under and in accordance with the Indenture.

The City or County Tax Assessor/Collector will invoice each owner of a benefited Parcel within the Property at the same time as the City's annual property tax bill, and the Annual Installment shall be due and payable, and incur penalty and interest for unpaid Annual Installments in the same manner as provided for the City's property taxes. Thereafter, subsequent Annual Installments shall be due in the same manner in each succeeding calendar year until the Assessment together with interest, including the Additional Interest, and Administrative Expenses as provided herein has been paid in full.

Failure of an owner to receive an Annual Installment on the property tax bill shall not relieve the owner of the responsibility for payment of the Assessment or the Annual Installment. Assessments and/or Annual Installments that are delinquent shall incur Delinquent Collection Costs. The City Council may provide for other means of collecting the Annual Installments to the extent permitted under the PID Act. In the event of default or foreclosure of any element of the Development, the City has no financial obligations under the Development Agreement and is only obligated to enforce the collection of the Assessments.

Collection of the Annual Installments for the assessed property commenced with the 2022 tax year. The calculation of the Annual Installments for the assessed property, is shown in Table II-C-1 on the following page.

Table II-C-1
Budget for Annual Installments to be Collected for 2025-26

Descriptions	Single - Family Total	Per Lot¹	Phase 7 Retail
Revenues			
Annual Installments	\$986,623	\$1,339	\$5,361
Available Fund Balances			
Reserve Fund	\$55,697	\$76	\$303
Administrative Fund	\$0	\$0	
Total Revenues	\$1,042,320	\$1,414	\$5,664
Expenditures			
Series 2022 Bonds			
March 1, 2026 Interest	\$327,552	\$444	\$1,780
September 1, 2026 Interest	\$327,552	\$444	\$1,780
September 1, 2026 Principal	\$228,757	\$310	\$1,243
Prepayment and Delinquency Reserve	\$63,972	\$87	\$348
Administrative Expenses	\$94,487	\$128	\$513
Total Expenditures	\$1,042,320	\$1,414	\$5,664

1 - The Assessment and Annual Installment are the same for each residential lot. Dividing the total Annual Installment by the 737 lots results in the Annual Installment per lot shown above.

The Annual Installments are allocated to each Lot Type pursuant to the Assessment apportionment as shown in Table II-C-2 below.

Table II-C-2
Annual Installment per Lot Type

Lot Type	No. of Outstanding Units	Total Outstanding Special Assessments	Percentage of Total Special Assessment	Annual Installments	Annual Installment Per Lot Type
55	737	\$12,794,480	99.46%	\$986,623	\$1,339
Retail	1	\$69,520	0.54%	\$5,361	\$5,361
	738	\$12,864,000	100.00%	\$991,984	

D. FIVE YEAR SERVICE PLAN

A service plan must cover a period of five years. The anticipated budget for the Authorized Improvements over a period of five years and the indebtedness expected to be incurred for these costs is shown by Table II-D-1 on the following page.

Table II-D-1
Projected 5-Year Cash Flows

Description	Assessment Year					
	2026	2027	2028	2029	2030	2031
Revenues						
Annual Installments	\$991,984	\$1,048,959	\$1,049,497	\$1,051,349	\$1,052,557	\$1,053,124
Available Fund Balances ¹	\$56,000	\$0	\$0	\$0	\$0	\$0
Total Revenues	\$1,047,984	\$1,048,959	\$1,049,497	\$1,051,349	\$1,052,557	\$1,053,124
Expenditures						
Bond Debt Service	\$888,664	\$888,889	\$888,689	\$889,814	\$890,321	\$890,211
Administrative Expenses	\$95,000	\$96,900	\$98,838	\$100,815	\$102,831	\$104,888
Additional Interest	\$64,320	\$63,170	\$61,970	\$60,720	\$59,405	\$58,025
Total Expenditures	\$1,047,984	\$1,048,959	\$1,049,497	\$1,051,349	\$1,052,557	\$1,053,124

1- Represents available fund balances held by Winchester PID No.2 Trustee

E. PID ASSESSMENT NOTICE

The PID Act requires that this Updated Service and Assessment Plan and each Annual Service Plan Update include a copy of the notice form required by Section 5.014 of the Texas Property Code. The PID Assessment Notice is attached hereto as Appendix D.

Section 372.013 of the PID Act, as amended, stipulates that a person who proposes to sell or otherwise convey real property that is located in the PID, except in certain situations described in the PID Act, shall first give to the purchaser of the property a copy of the completed PID Assessment Notice. The PID Assessment Notice shall be given to a prospective purchaser before the execution of a binding contract of purchase and sale, either separately or as an addendum or paragraph of a purchase contract. In the event a contract of purchase and sale is entered into without the seller provided the required notice, the purchaser, subject to certain exceptions described in the PID act, is entitled to terminate the contract.

The PID Assessment Notice shall be executed by the seller and must be filed in the real property records of the County in which the property is located at the closing of the purchase and sale of the property.

F. BOND REDEMPTION RELATED UPDATES

The Bonds were issued in 2022. Pursuant to Section 4.3 of the Indenture, the City reserves the right and option to redeem the Bonds before their scheduled maturity date, in whole or in part, on any date on or after **September 1, 2030**, such redemption date or dates to be fixed by the City, at

the redemption price equal to the principal amount of the Bonds to be redeemed, plus accrued and unpaid interest to the date fixed for redemption. The City shall notify the Trustee in writing no less than forty-five (45) days before the scheduled redemption date fixed by the City in accordance with Section 4.3 of the Indenture.

The Administrator has conducted a preliminary evaluation of the current refunding market conditions, recent PID bond refunding transactions, and other relevant factors. Based on this preliminary evaluation, the Administrator believes a refunding of the Bonds does not appear viable at this time. The Administrator will continue to monitor the refunding market conditions, applicable PID bond refunding transactions, and other relevant factors to determine if refunding becomes viable in the future and will inform the City accordingly.

(the remainder of this page is intentionally left blank)

III. UPDATE OF THE ASSESSMENT PLAN

Pursuant to Section 372.015 of the PID Act, the cost of an improvement to be assessed against property in an improvement district shall be apportioned based on the special benefits accruing to the property because of the improvement. The costs of an improvement may be assessed (i) equally per front foot or square foot, (ii) according to the value of the property as determined by the City Council, with or without regard to improvements on the property, or (iii) in any other manner that results in imposing equal shares of the cost on properties similarly benefited. Furthermore, Section 372.015 of the PID Act provides that the City Council may establish by ordinance or order (i) reasonable classifications and formulas for the apportionment of the cost between the municipality or county and the area to be assessed and (ii) the methods of assessing the special benefits for various classes of improvements. The Assessment Plan describes the special benefit received by each classification of property from the Authorized Improvements, provides the basis and justification for the determination that the special benefit is equal to or greater than the amount of the Assessments, and establishes the methodology by which the City Council apportions costs in a manner that results in equal shares allocated to Parcels similarly benefited.

The determination by the City Council of the assessment methodology set forth herein is the result of the discretionary exercise by the City Council of its legislative authority and governmental powers and is conclusive and binding on the Developer and all future Parcel owners. Notwithstanding any applicable impact fee, the City shall not be liable for payment of any costs of the Authorized Improvements or the Private Improvements from general funds or other revenues or resources of the City. The City assumes no financial obligation whatsoever in the event of default or foreclosure of any Parcel, portion or phase of the Property.

Assessment Methodology

This method of assessing property has not been changed and the assessed property will continue to be assessed as provided for in the Updated Service and Assessment Plan.

A. ALLOCATION OF BUDGETED COSTS

The City Council has determined to allocate the Budgeted Costs to each single-family lot within the PID in proportion to estimated average buildout value (i.e., estimated completed single-family home values). The City Council has further determined that creating assessment classifications based on the anticipated Lot Types within the PID will result in imposing equal shares of cost on properties similarly benefited. Therefore, the Parcels on which the Assessments are levied receive a direct and special benefit from the Improvements, and this benefit is equal to or greater than the amount assessed.

B. CALCULATION OF ASSESSMENTS

Average buildout values, the anticipated number of Lots for each Lot Type, the resulting assessments, and estimated Annual Installments for each Lot Type are restated in Table III-B-1 below.

Table III-B-1
Lot Type Values and Assessments per Lot Type

Phase	Lot Type ¹	Estimated Count	Estimated Home Value	Total Buildout Value	% of Buildout Value	% per Lot	Total Assessment	Assessment per Lot
5	55	178	\$335,000	\$59,630,000	24.15%	0.14%	\$3,227,041	\$18,129
6	55	195	\$335,000	\$65,325,000	26.46%	0.14%	\$3,535,241	\$18,129
7	55	220	\$335,000	\$73,700,000	29.85%	0.14%	\$3,988,477	\$18,129
8	55	144	\$335,000	\$48,240,000	19.54%	0.14%	\$2,610,640	\$18,129
<i>Subtotal Single-Family</i>		737		\$246,895,000	100%		\$13,361,399	
5	Retail ²	1	N/A	N/A	N/A	N/A	\$0	\$0
7	Retail ²	1	N/A	N/A	N/A	N/A	\$72,601	\$72,601
<i>Subtotal Retail</i>		2	0	0	0	0	\$72,600.65	\$72,600.65
Total		739		\$246,895,000	100.00%		\$13,434,000	

1 - As provided in 2024-25 Winchester No. 2 Service and Assessment Plan Update

2 - Retail Assessment allocated based on special benefit received as described in the Updated Service and Assessment Plan.

(the remainder of this page is intentionally left blank)

IV. UPDATE OF THE ASSESSMENT ROLL

A. PARCEL UPDATES

According to the Updated Service and Assessment Plan, Upon the duly approved subdivision of Assessed Property, including a replat of a previously recorded subdivision plat, the Assessment for the subdivided Parcel shall be reallocated to the new Parcels created by the subdivision as described below.

$$A = S \times (L \div T)$$

Where the terms have the following meanings:

“A” means the allocated Assessment for a new Parcel.

“S” means the Assessment for the subdivided Parcel.

“L” means the Assessment for the Lot Type or sum of the Assessments for the Lot Types, as applicable, for the new Parcel created by the subdivision.

“T” means the total or sum of the Assessments for all new Parcels created by the subdivision based on the Lot Type or number of prospective Lots and Lot Types applicable to such new Parcels.

The determination of the (i) Lot Type or Lot Types applicable to each new Parcel created by the subdivision and (ii) the number of single-family lots applicable to each new Parcel created by the subdivision shall be determined by reference to the recorded final plat(s) for the applicable Phase, the replat of such recorded final plats, if applicable, and prior to the recordation of each such final plat the Final Plats included in Appendix E attached hereto. The Assessment applicable to each Lot Type shall be determined by reference to Table III-B-1.

Any reallocation of Assessments pursuant to this section shall be calculated by the Administrator and reflected in an Annual Service Plan Update approved by the City Council. The reallocation of any Assessments as described herein shall be considered an administrative action and will not require any notice or public hearing, as defined in the PID Act, by the City Council. The City shall not approve a final subdivision plat or other document subdividing a Parcel without a letter from the Administrator either (i) confirming that the Assessment for any new Parcel created by the subdivision plat will not exceed the Assessment for the Lot Type or Lot Types applicable to such Parcels or (ii) confirming the payment of the applicable Mandatory Assessment Prepayment as provided for herein.

B. PREPAYMENT OF ASSESSMENTS

As of July 31, 2025, the Administrator has no knowledge of any prepayment of Assessments.

The complete Assessment Rolls are available for review at the City Hall, located at 2000 E. Princeton Dr., Princeton, Texas 75407.

(the remainder of this page is intentionally left blank)

APPENDIX A
PID MAP, LEGAL DESCRIPTIONS AND CONCEPT PLANS

PHASE 5 METES AND BOUNDS

LEGAL DESCRIPTION (TRACT 1)

Being a parcel of land located in Collin County Texas, a part of the Hardin Wright Survey, Abstract Number 957, being a part of that called 177.029 acre tract of land described in correction special warranty deed to D.R. Horton – Texas, LTD. as recorded in Document Number 20200220000240210, Official Public Records of Collin County, Texas, and also being a part of that called 9.9403 acre tract of land described in deed to D.R. Horton – Texas, LTD. as recorded in Document Number 20200527000772980, Official Public Records of Collin County, Texas and being further described as follows:

BEGINNING at a mag nail with shiner stamped “J.E. SMITH R.P.L.S. 3700” found at the northeast corner of said 177.029 acre tract, said point being the southeast corner of Winchester Crossing Phase 3, an addition to the City of Princeton as recorded in Volume 2021, Page 594, Official Public Records of Collin County, Texas, said point also being in the approximate centerline of County Road No. 447;

THENCE South 00 degrees 33 minutes 59 seconds West, 757.08 feet, along east line of said 177.029 acre tract and along the approximate centerline intersection of County Road No. 447 to a one-half inch iron rod with yellow cap stamped “JBI” set for corner;

THENCE North 89 degrees 26 minutes 01 seconds West, 50.00 feet to a one-half inch iron rod with yellow cap stamped “JBI” set for corner;

THENCE North 44 degrees 58 minutes 34 seconds West, 28.02 feet to a one-half inch iron rod with yellow cap stamped “JBI” set for corner;

THENCE South 89 degrees 28 minutes 52 seconds West, 164.87 feet to a one-half inch iron rod with yellow cap stamped “JBI” set for corner;

THENCE Northwesterly, 10.85 feet along curve to the right having a central angle of 02 degrees 13 minutes 14 seconds, a radius of 280.00 feet, a tangent of 5.43 feet, and whose chord bears North 89 degrees 24 minutes 31 seconds West, 10.85 feet to a one-half inch iron rod with yellow cap stamped “JBI” set for corner;

THENCE North 00 degrees 31 minutes 08 seconds West, 59.79 feet to a one-half inch iron rod with yellow cap stamped “JBI” set for corner;

THENCE North 89 degrees 28 minutes 52 seconds East, 0.85 feet to a one-half inch iron rod with yellow cap stamped “JBI” set for corner;

THENCE North 44 degrees 28 minutes 52 seconds East, 14.14 feet to a one-half inch iron rod with yellow cap stamped “JBI” set for corner;

THENCE North 00 degrees 31 minutes 08 seconds West, 105.00 feet to a one-half inch iron rod with yellow cap stamped “JBI” set for corner;

THENCE South 89 degrees 28 minutes 52 seconds West, 2,627.54 feet to a one-half inch iron rod with yellow cap stamped "JBI" set for corner;

THENCE North 78 degrees 49 minutes 20 seconds West, 50.00 feet to a one-half inch iron rod with yellow cap stamped "JBI" set for corner;

THENCE Northeasterly, 50.17 feet along curve to the right having a central angle of 02 degrees 50 minutes 05 seconds, a radius of 1,014.00 feet, a tangent of 25.09 feet, and whose chord bears North 12 degrees 35 minutes 43 seconds East, 50.16 feet to a one-half inch iron rod with yellow cap stamped "JBI" set for corner;

THENCE North 75 degrees 59 minutes 14 seconds West, 116.00 feet to a one-half inch iron rod with yellow cap stamped "JBI" set for corner;

THENCE Southwesterly, 252.32 feet along curve to the left having a central angle of 12 degrees 47 minutes 37 seconds, a radius of 1,130.00 feet, a tangent of 126.69 feet, and whose chord bears South 07 degrees 36 minutes 57 seconds West, 251.80 feet to a one-half inch iron rod with yellow cap stamped "JBI" set for corner;

THENCE South 01 degrees 13 minutes 09 seconds West, 399.02 feet to a one-half inch iron rod with yellow cap stamped "JBI" set for corner;

THENCE South 89 degrees 28 minutes 52 seconds West, 20.01 feet to a one-half inch iron rod with yellow cap stamped "JBI" set for corner;

THENCE South 01 degrees 13 minutes 09 seconds West, 503.95 feet to a one-half inch iron rod with yellow cap stamped "JBI" set for corner;

THENCE South 44 degrees 38 minutes 14 seconds East, 41.79 feet to a one-half inch iron rod with yellow cap stamped "JBI" set for corner;

THENCE South 00 degrees 29 minutes 36 seconds East, 35.00 feet to a one-half inch iron rod with yellow cap stamped "JBI" set for corner in the south line of said 9.9403 acre tract;

THENCE South 89 degrees 30 minutes 24 seconds West, 81.07 feet to a PK nail found for corner at the southwest corner of said 9.9403 acre tract, said point also being the most easterly southeast corner of that called 187.2774 acre tract of land described in deed to Dan Dowell Credit Trust as recorded in Document Number 20150105000011710, Official Public Records of Collin County, Texas;

THENCE North 01 degrees 13 minutes 09 seconds East, at 567.98 feet passing a one-half inch iron rod with yellow cap stamped "JBI" found at the northwest corner of said 9.9403 acre tract, said point also being in the east line of said 187.2774 acre tract in all a total distance of 970.08 feet to a five-eighths inch iron rod found for corner in the common line of said 177.029 acre tract said 187.2774 acre tract;

THENCE North 88 degrees 48 minutes 10 seconds West, 70.00 feet to a one-half inch iron rod with yellow cap stamped "JBI" set for corner;

THENCE Northeasterly, 552.32 feet along curve to the right having a central angle of 24 degrees 55 minutes 04 seconds, a radius of 1,270.00 feet, a tangent of 280.60 feet, and whose chord bears North 13 degrees 40 minutes 36 seconds East, 547.98 feet to a one-half inch iron rod with yellow cap stamped "JBI" set for corner;

THENCE Northeasterly, 495.93 feet along curve to the left having a central angle of 25 degrees 08 minutes 45 seconds, a radius of 1,130.00 feet, a tangent of 252.03 feet, and whose chord bears North 13 degrees 33 minutes 45 seconds East, 491.96 feet to a one-half inch iron rod with yellow cap stamped "JBI" set for corner;

THENCE North 00 degrees 59 minutes 23 seconds East, 635.57 feet to a one-half inch iron rod with yellow cap stamped "JBI" set for corner;

THENCE Northeasterly, 306.23 feet along curve to the right having a central angle of 12 degrees 48 minutes 25 seconds, a radius of 1,370.00 feet, a tangent of 153.75 feet, and whose chord bears North 07 degrees 23 minutes 35 seconds East, 305.59 feet to a one-half inch iron rod with yellow cap stamped "JBI" set for corner;

THENCE North 13 degrees 47 minutes 48 seconds East, 180.79 feet to a one-half inch iron rod with yellow cap stamped "JBI" set for corner;

THENCE North 13 degrees 31 minutes 38 seconds West, 103.10 feet to a one-half inch iron rod with yellow cap stamped "JBI" found for corner, said point being in the most northerly line of said 177.029 acre tract of land and also being in the south line of Winchester Crossing Phase 4, an addition to the City of Princeton as recorded in Volume 2021, Page 417, Official Public Records of Collin County, Texas;

THENCE North 89 degrees 29 minutes 10 seconds East, 64.29 feet along the north line of said 177.029 acre tract and along the south line of said Winchester Crossing Phase 4 to a one-half inch iron rod with yellow cap stamped "JBI" found for corner at the southeast corner of said Winchester Crossing Phase 4, said point being the southwest corner of Winchester Crossing Phase 1, an addition to the City of Princeton, as recorded in Volume 2019, Page 609 Official Public Records of Collin County, Texas, said point also being in the west right-of-way line of South Beauchamp Boulevard, a 100 foot right-of-way;

THENCE along the west right-of-way line of South Beauchamp as follows:

Southwesterly, 107.65 feet along a curve to the right having a central angle of 05 degrees 21 minutes 48 seconds, a radius of 1,150.00 feet, a tangent of 53.86 feet and whose chord bears South 11 degrees 06 minutes 54 seconds West, 107.61 feet to a one-half inch iron rod with yellow cap stamped "JBI" found for corner;

South 13 degrees 47 minutes 48 seconds West, 180.79 feet to a one-half inch iron rod with yellow cap stamped "JBI" found for corner;

Southwesterly, 301.76 feet along a curve to the left having a central angle of 12 degrees 48 minutes 25 seconds, a radius of 1,350.00 feet, a tangent of 151.51 feet and whose chord bears South 07 degrees 23 minutes 35 seconds West, 301.13 feet to a one-half inch iron rod with yellow cap stamped "JBI" found for corner;

South 00 degrees 59 minutes 23 second West, 635.57 feet to a one-half inch iron rod with yellow caps stamped "JBI" found for corner;

Southwesterly, 294.24 feet along a curve to the right having a central angle of 14 degrees 39 minutes 35 seconds, a radius of 1,150.00 feet, a tangent of 147.93 feet and whose chord bears South 08

degrees 19 minutes 10 seconds West, 293.44 feet to a one-half inch iron rod with yellow cap stamped "JBI" found for corner at the southwest corner of said Winchester Crossing Phase 3;

THENCE North 89 degrees 28 minutes 52 seconds East, 2,972.81 feet along the south line of said Winchester Crossing Phase 3 to the POINT OF BEGINNING and containing 1,884,167 square feet or 43.255 acres of land.

BASIS OF BEARING: The basis of bearing is based on the coordinate system (north central zone 4202 state plane coordinates, nad83), distances shown hereon are grid distance values.

LEGAL DESCRIPTION
(TRACT 2)

Being a parcel of land located in Collin County Texas, a part of the Hardin Wright Survey, Abstract Number 957, being a part of that called 177.029 acre tract of land described in correction special warranty deed to D.R. Horton – Texas, LTD. as recorded in Document Number 20200220000240210, Official Public Records of Collin County, Texas and being further described as follows:

BEGINNING at a three-eighths inch iron rod found at the northwest corner of Lot 21, Block N of Winchester Crossing, Phase 1 and addition to the City of Princeton, Texas as recorded in Volume 2019, Page 609 Official Public Records of Collin County;

THENCE South 01 degrees 45 minutes 15 seconds West, 411.74 feet along the west line of said Winchester Crossing, Phase 1 to a one-half inch iron rod with yellow cap stamped "JBI" found corner at the southwest corner of Lot 15, Block N of Winchester Crossing, Phase 1;

THENCE South 89 degrees 29 minutes 08 seconds West, 208.88 feet to a one-half inch iron rod with yellow cap stamped "JBI" found for corner in the east right-of-way line of South Beauchamp Boulevard, a 100 foot right-of-way as recorded in Instrument Number 20190711000816080;

THENCE along the east right-of-way line of said South Beauchamp Boulevard as follows:

Northeasterly 108.46 feet along a curve to the right having a central angle of 04 degrees 58 minutes 17 seconds, a radius of 1,250.00 feet, a tangent of 54.26 feet and whose chord bears North 11 degrees 18 minutes 39 seconds East, 108.42 feet to a one-half inch iron rod with yellow cap stamped "JBI" set for corner;

North 13 degrees 47 minutes 48 seconds East, 180.79 feet to a one-half inch iron rod with yellow stamped "JBI" cap set for corner;

Northeasterly, 132.74 feet along a curve to the left having a central angle of 06 degrees 05 minutes 03 seconds, a radius of 1,250.00 feet, a tangent of 66.43 feet and whose chord bears North 10 degrees 45 minutes 16 seconds East, 132.68 feet to a one-half inch iron rod with yellow cap stamped "JBI" found for corner in the southwest corner of Lot 22X, Block X of said Winchester Crossing, Phase 1;

THENCE North 89 degrees 29 minutes 10 seconds East, 132.35 feet along the south line of said Lot 22X, Block X to the POINT OF BEGINNING and containing 69,842 square feet or 1.603 acres of land.

BASIS OF BEARING: The basis of bearing is based on the coordinate system (north central zone 4202 state plane coordinates, nad83), distances shown hereon are grid distance values.

PHASE 6 METES AND BOUNDS

OWNERS CERTIFICATE §

STATE OF TEXAS §

COLLIN COUNTY §

Being a parcel of land located in the City of Princeton, Collin County, Texas, a part of the Hardin Wright Survey, Abstract Number 957, being a part of that called 177.029 acre tract of land described in Correction Special Warranty Deed to D.R. Horton – Texas, LTD. as recorded in Document Number 20200220000240210, Official Public Records of Collin County, Texas and being further described as follows:

BEGINNING at a “PK” nail found at the southeast corner of said 177.029 acre tract, said point also being at the approximate centerline intersection of County Road No. 447 and County Road No. 398;

THENCE South 89 degrees 30 minutes 24 seconds West, 1,882.20 feet along the south line of said 177.029 acre tract and along the approximate centerline of County Road No. 398 to a one-half inch iron rod with yellow cap stamped “JBI” set for corner, from which said one-half inch iron rod with yellow cap set bears South 89 degrees 30 minutes 24 seconds West, 476.00 feet to a “PK” Nail found at the southwest corner of said 177.029 acre tract, said point also being the southeast corner of that called 9.9403 acre tract of land described in deed to D.R. Horton-Texas, Ltd. As recorded in Document Number 20200527000772980, Official Public Records of Collin County, Texas;

THENCE North 00 degrees 29 minutes 36 seconds West, 55.00 feet to a one-half inch iron rod with yellow cap stamped “JBI” set for corner;

THENCE North 44 degrees 30 minutes 24 seconds East, 26.16 feet to a one-half inch iron rod with yellow cap stamped “JBI” set for corner;

THENCE North 00 degrees 29 minutes 36 seconds West, 97.50 feet to a one-half inch iron rod with yellow cap stamped “JBI” set for corner;

THENCE South 89 degrees 30 minutes 24 seconds West, 5.00 feet to a one-half inch iron rod with yellow cap stamped “JBI” set for corner;

THENCE North 00 degrees 29 minutes 36 seconds West, 50.00 feet to a one-half inch iron rod with yellow cap stamped “JBI” set for corner;

THENCE North 89 degrees 30 minutes 24 seconds East, 71.40 feet to a one-half inch iron rod with yellow cap stamped “JBI” set for corner;

THENCE North 00 degrees 31 minutes 08 seconds West, 463.27 feet to a one-half inch iron rod with yellow cap stamped “JBI” set for corner;

THENCE South 89 degrees 28 minutes 52 seconds West, 105.00 feet to a one-half inch iron rod with yellow cap stamped "JBI" set for corner;

THENCE South 44 degrees 28 minutes 52 seconds West, 14.14 feet to a one-half inch iron rod with yellow cap stamped "JBI" set for corner;

THENCE South 00 degrees 31 minutes 08 seconds East, 14.89 feet to a one-half inch iron rod with yellow cap stamped "JBI" set for corner;

THENCE South 89 degrees 21 minutes 12 seconds West, 50.00 feet to a one-half inch iron rod with yellow cap stamped "JBI" set for corner;

THENCE North 00 degrees 31 minutes 08 seconds West, 15.00 feet to a one-half inch iron rod with yellow cap stamped "JBI" set for corner;

THENCE North 45 degrees 31 minutes 08 seconds West, 14.14 feet to a one-half inch iron rod with yellow cap stamped "JBI" set for corner;

THENCE South 89 degrees 28 minutes 52 seconds West, 210.00 feet to a one-half inch iron rod with yellow cap stamped "JBI" set for corner;

THENCE South 44 degrees 28 minutes 52 seconds West, 14.14 feet to a one-half inch iron rod with yellow cap stamped "JBI" set for corner;

THENCE South 00 degrees 31 minutes 08 seconds East, 14.89 feet to a one-half inch iron rod with yellow cap stamped "JBI" set for corner;

THENCE South 89 degrees 21 minutes 12 seconds West, 50.00 feet to a one-half inch iron rod with yellow cap stamped "JBI" set for corner;

THENCE North 00 degrees 31 minutes 08 seconds West, 15.00 feet to a one-half inch iron rod with yellow cap stamped "JBI" set for corner;

THENCE North 45 degrees 31 minutes 08 seconds West, 14.14 feet to a one-half inch iron rod with yellow cap stamped "JBI" set for corner;

THENCE South 89 degrees 21 minutes 12 seconds West, 15.00 feet to a one-half inch iron rod with yellow cap stamped "JBI" set for corner;

THENCE North 00 degrees 31 minutes 08 seconds West, 50.00 feet to a one-half inch iron rod with yellow cap stamped "JBI" set for corner;

THENCE North 89 degrees 21 minutes 12 seconds East, 15.00 feet to a one-half inch iron rod with yellow cap stamped "JBI" set for corner;

THENCE North 44 degrees 28 minutes 52 seconds East, 14.14 feet to a one-half inch iron rod with yellow cap stamped "JBI" set for corner;

THENCE North 00 degrees 31 minutes 08 seconds West, 210.00 feet to a one-half inch iron rod with yellow cap stamped "JBI" set for corner;

THENCE North 45 degrees 31 minutes 08 seconds West, 14.14 feet to a one-half inch iron rod with yellow cap stamped "JBI" set for corner;

THENCE South 89 degrees 21 minutes 12 seconds West, 15.00 feet to a one-half inch iron rod with yellow cap stamped "JBI" set for corner;

THENCE North 00 degrees 31 minutes 08 seconds West, 50.00 feet to a one-half inch iron rod with yellow cap stamped "JBI" set for corner;

THENCE North 89 degrees 21 minutes 12 seconds East, 15.00 feet to a one-half inch iron rod with yellow cap stamped "JBI" set for corner;

THENCE North 44 degrees 28 minutes 52 seconds East, 14.14 feet to a one-half inch iron rod with yellow cap stamped "JBI" set for corner;

THENCE North 00 degrees 31 minutes 08 seconds West, 105.00 feet to a one-half inch iron rod with yellow cap stamped "JBI" found for corner in the south line of Winchester Crossing, Phase 5, an addition to the City of Princeton as recorded in Volume 2021, Page 761, Official Public Records of Collin County, Texas;

THENCE North 89 degrees 28 minutes 52 seconds East, 2,025.42 feet along the south line of said Winchester Crossing, Phase 5, to a one-half inch iron rod with yellow cap stamped "JBI" found for corner;

THENCE South 00 degrees 31 minutes 08 seconds East, 105.00 feet to a one-half inch iron rod with yellow cap stamped "JBI" set for corner;

THENCE South 44 degrees 28 minutes 52 seconds West, 14.14 feet to a one-half inch iron rod with yellow cap stamped "JBI" set for corner;

THENCE South 89 degrees 28 minutes 52 seconds West, 0.85 feet to a one-half inch iron rod with yellow cap stamped "JBI" set for corner;

THENCE South 00 degrees 31 minutes 08 seconds East, 59.79 feet to a one-half inch iron rod with yellow cap stamped "JBI" set for corner;

THENCE Southeasterly, 10.85 feet along a curve to the left having a central angle of 02 degrees 13 minutes 14 seconds, a radius of 280.00 feet, a tangent of 5.43 feet, and whose chord bears South 89 degrees 24 minutes 31 seconds East, 10.85 feet to a one-half inch iron rod with yellow cap stamped "JBI" set for corner;

THENCE North 89 degrees 28 minutes 52 seconds East, 164.87 feet to a one-half inch iron rod with yellow cap stamped "JBI" set for corner;

THENCE South 44 degrees 58 minutes 34 seconds East, 28.02 feet to a one-half inch iron rod with yellow cap stamped "JBI" set for corner;

THENCE South 89 degrees 26 minutes 01 seconds East, 50.00 feet to a one-half inch iron rod with yellow cap stamped "JBI" set for corner in the east line of said 177.029 acre tract, said point also being in the approximate centerline of County Road No. 447;

THENCE South 00 degrees 33 minutes 59 seconds West, 934.30 feet along the east line of said 177.029 acre tract and along the approximate centerline of County Road No. 447 to the POINT OF BEGINNING and containing 2,218,532 square feet or 50.931 acres of land.

BASIS OF BEARING: The basis of bearing is based on the coordinate system (north central zone 4202 state plane coordinates, nad83), distances shown hereon are grid distance values.

PHASE 7 METES AND BOUNDS

LEGAL DESCRIPTION

(TRACT 1)

Being a parcel of land located in the City of Princeton, Collin County Texas, a part of the Hardin Wright Survey, Abstract Number 957, being a part of that called 177.029 acre tract of land described in correction special warranty deed to D.R. Horton – Texas, LTD. as recorded in Document Number 20200220000240210, Official Public Records of Collin County, Texas, and also being a part of that called 9.9403 acre tract of land described in deed to D.R. Horton – Texas, LTD. as recorded in Document Number 20200527000772980, Official Public Records of Collin County, Texas and being further described as follows:

BEGINNING at a one-half inch iron rod with yellow cap stamped “JBI” found at the southeast corner of South Beauchamp Boulevard right-of-way dedication dedicated by Winchester, Phase 5 plat, an addition to the City of Princeton as recorded in Volume 2021, Page 761, Official Public Records of Collin County, Texas;

THENCE along the east right-of-way line of South Beauchamp Boulevard as follows:

North 00 degrees 29 minutes 36 seconds West, 35.00 feet to a one-half inch iron rod with yellow cap stamped “JBI” found for corner;

North 44 degrees 38 minutes 14 seconds West, 41.79 feet to a one-half inch iron rod with yellow cap stamped “JBI” found for corner;

North 01 degrees 13 minutes 09 seconds East, 503.95 feet to a one-half inch iron rod with yellow cap stamped “JBI” found for corner, said point being the southwest corner of Lot 44X, Block J, of said Winchester Crossing, Phase 5;

THENCE along the south and east line of said Lot 44X, Block J as follows:

North 89 degrees 28 minutes 52 seconds East, 20.01 feet to a one-half inch iron rod with yellow cap stamped “JBI” found for corner;

North 01 degrees 13 minutes 09 seconds East, 399.02 feet to a one-half inch iron rod with yellow cap stamped “JBI” found for corner;

Northeasterly, 252.32 feet along a curve to the right having a central angle of 12 degrees 47 minutes 37 seconds, a radius of 1,130.00 feet, a tangent of 126.69 feet and whose chord bears North 07 degrees 36 minutes 57 seconds East, 251.80 feet to a one-half inch iron rod with yellow cap stamped “JBI” found for corner in the south line of said Winchester Crossing, Phase 5;

THENCE along the south line of said Winchester Crossing, Phase 5 as follows:

South 75 degrees 59 minutes 14 seconds East, 116.00 feet to a one-half inch iron rod with yellow cap stamped “JBI” found for corner;

Southwesterly, 50.17 feet along a curve to the left having a central angle of 02 degrees 50 minutes 05 seconds, a radius of 1,014.00 feet, a tangent of 25.09 feet whose chord bears South 12 degrees 35 minutes 43 seconds West, 50.16 feet to a one-half inch iron rod with yellow cap stamped “JBI” set for corner;

South 78 degrees 49 minutes 20 seconds East, 50.00 feet to a one-half inch iron rod with yellow cap stamped “JBI” found for corner;

North 89 degrees 28 minutes 52 seconds East, 602.12 feet to a one-half inch iron rod with yellow cap stamped "JBI" found for corner;

THENCE South 00 degrees 31 minutes 08 seconds East, 105.00 feet to a one-half inch iron rod with yellow cap stamped "JBI" set for corner;

THENCE South 44 degrees 28 minutes 52 seconds West, 14.14 feet to a one-half inch iron rod with yellow cap stamped "JBI" set for corner;

THENCE South 89 degrees 21 minutes 12 seconds West, 15.00 feet to a one-half inch iron rod with yellow cap stamped "JBI" set for corner;

THENCE South 00 degrees 31 minutes 08 seconds East, 50.00 feet to a one-half inch iron rod with yellow cap stamped "JBI" set for corner;

THENCE North 89 degrees 21 minutes 12 seconds East, 15.00 feet to a one-half inch iron rod with yellow cap stamped "JBI" set for corner;

THENCE South 45 degrees 31 minutes 08 seconds East, 14.14 feet to a one-half inch iron rod with yellow cap stamped "JBI" set for corner;

THENCE South 00 degrees 31 minutes 08 seconds East, 210.00 feet to a one-half inch iron rod with yellow cap stamped "JBI" set for corner;

THENCE South 44 degrees 28 minutes 52 seconds West, 14.14 feet to a one-half inch iron rod with yellow cap stamped "JBI" set for corner;

THENCE South 89 degrees 21 minutes 12 seconds West, 15.00 feet to a one-half inch iron rod with yellow cap stamped "JBI" set for corner;

THENCE South 00 degrees 31 minutes 08 seconds East, 50.00 feet to a one-half inch iron rod with yellow cap stamped "JBI" set for corner;

THENCE North 89 degrees 21 minutes 12 seconds East, 15.00 feet to a one-half inch iron rod with yellow cap stamped "JBI" set for corner;

THENCE South 45 degrees 31 minutes 08 seconds East, 14.14 feet to a one-half inch iron rod with yellow cap stamped "JBI" set for corner;

THENCE South 00 degrees 31 minutes 08 seconds East, 15.00 feet to a one-half inch iron rod with yellow cap stamped "JBI" set for corner;

THENCE North 89 degrees 21 minutes 12 seconds East, 50.00 feet to a one-half inch iron rod with yellow cap stamped "JBI" set for corner;

THENCE North 00 degrees 31 minutes 08 seconds West, 14.89 feet to a one-half inch iron rod with yellow cap stamped "JBI" set for corner;

THENCE North 44 degrees 28 minutes 52 seconds East, 14.14 feet to a one-half inch iron rod with yellow cap stamped "JBI" set for corner;

THENCE North 89 degrees 28 minutes 52 seconds East, 210.00 feet to a one-half inch iron rod with yellow cap stamped "JBI" set for corner;

THENCE South 45 degrees 31 minutes 08 seconds East, 14.14 feet to a one-half inch iron rod with yellow cap stamped "JBI" set for corner;

THENCE South 00 degrees 31 minutes 08 seconds East, 15.00 feet to a one-half inch iron rod with yellow cap stamped "JBI" set for corner;

THENCE North 89 degrees 21 minutes 12 seconds East, 50.00 feet to a one-half inch iron rod with yellow cap stamped "JBI" set for corner;

THENCE North 00 degrees 31 minutes 08 seconds West, 14.89 feet to a one-half inch iron rod with yellow cap stamped "JBI" set for corner;

THENCE North 44 degrees 28 minutes 52 seconds East, 14.14 feet to a one-half inch iron rod with yellow cap stamped "JBI" set for corner;

THENCE North 89 degrees 28 minutes 52 seconds East, 105.00 feet to a one-half inch iron rod with yellow cap stamped "JBI" set for corner;

THENCE South 00 degrees 31 minutes 08 seconds East, 463.27 feet to a one-half inch iron rod with yellow cap stamped "JBI" set for corner;

THENCE South 89 degrees 30 minutes 24 seconds West, 71.40 feet to a one-half inch iron rod with yellow cap stamped "JBI" set for corner;

THENCE South 00 degrees 29 minutes 36 seconds East, 50.00 feet to a one-half inch iron rod with yellow cap stamped "JBI" set for corner;

THENCE North 89 degrees 30 minutes 24 seconds East, 5.00 feet to a one-half inch iron rod with yellow cap stamped "JBI" set for corner;

THENCE South 00 degrees 29 minutes 36 seconds East, 97.50 feet to a one-half inch iron rod with yellow cap stamped "JBI" set for corner;

THENCE South 44 degrees 30 minutes 24 seconds West, 26.16 feet to a one-half inch iron rod with yellow cap stamped "JBI" set for corner;

THENCE South 00 degrees 29 minutes 36 seconds East, 55.00 feet to a one-half inch iron rod with yellow cap stamped "JBI" set for corner in the south line of said 177.029 acre tract, said point also being in the approximate centerline of County Road No. 398;

THENCE South 89 degrees 30 minutes 24 seconds West, at 476.00 feet passing a "PK" Nail found at the southwest corner of said 177.029 acre tract, said point being the southeast corner of said 9.9403 acre

tract, in all a total distance of 1,165.94 feet to the POINT OF BEGINNING and containing 1,204,179 square feet or 27.644 acres of land.

BASIS OF BEARING: The basis of bearing is based on the coordinate system (north central zone 4202 state plane coordinates, nad83), distances shown hereon are grid distance values.

LEGAL DESCRIPTION
(TRACT 2)

Being a parcel of land located in the City of Princeton, Collin County Texas, a part of the Hardin Wright Survey, Abstract Number 957, being a part of that called 177.029 acre tract of land described in correction special warranty deed to D.R. Horton – Texas, LTD. as recorded in Document Number 20200220000240210, Official Public Records of Collin County, Texas, and being further described as follows:

BEGINNING at a five-eighths inch iron rod with cap stamped "BENCHMARK GROUP" found for corner in the west line of said 177.029 acre tract, said point being in the east line of that called 187.250 acre tract of land described in deed to D.R. Horton- Texas, Ltd. as recorded in Document Number 20211201002443260, Official Public Records of Collin County, Texas;

THENCE along the common line of said 177.029 acre tract and said 187.250 acre tract as follows:

North 01 degrees 17 minutes 57 seconds East, 1,117.09 feet to a five-eighths inch iron rod with cap stamped "BENCHMARK GROUP" found for corner;

North 88 degrees 40 minutes 59 seconds West, 90.41 feet to a one-half inch iron rod with yellow cap stamped "JBI" set for corner in the east line of Winchester Crossing, Phase 8, an addition to the City of Princeton as recorded in Volume 2022, Page 64, Official Public Records of Collin County, Texas;

THENCE along the east line of said Winchester Crossing, Phase 8 as follows:

North 01 degrees 19 minutes 01 seconds East, 116.00 feet to a one-half inch iron rod with yellow cap stamped "JBI" set for corner;

South 88 degrees 40 minutes 59 seconds East, 25.41 feet to a one-half inch iron rod with yellow cap stamped "JBI" set for corner;

North 01 degrees 19 minutes 01 seconds East, 50.00 feet to a one-half inch iron rod with yellow cap stamped "JBI" set for corner;

North 88 degrees 40 minutes 59 seconds West, 11.00 feet to a one-half inch iron rod with yellow cap stamped "JBI" set for corner;

North 43 degrees 40 minutes 59 seconds West, 14.14 feet to a one-half inch iron rod with yellow cap stamped "JBI" set for corner;

North 01 degrees 19 minutes 01 seconds East, 57.33 feet to a one-half inch iron rod with yellow cap stamped "JBI" set for corner;

South 88 degrees 40 minutes 59 seconds East, 115.00 feet to a one-half inch iron rod with yellow cap stamped "JBI" set for corner;

North 01 degrees 19 minutes 01 seconds East, 415.34 feet to a one-half inch iron rod with yellow cap stamped "JBI" set for corner;

North 89 degrees 29 minutes 10 seconds East, 104.94 feet to a one-half inch iron rod with yellow cap stamped "JBI" set for corner;

South 44 degrees 45 minutes 44 seconds East, 13.96 feet to a one-half inch iron rod with yellow cap stamped "JBI" set for corner;

South 00 degrees 59 minutes 23 seconds West, 11.00 feet to a one-half inch iron rod with yellow cap stamped "JBI" set for corner;

South 89 degrees 00 minutes 37 seconds East, 50.00 feet to a one-half inch iron rod with yellow cap stamped "JBI" set for corner;

North 00 degrees 59 minutes 23 seconds East, 7.45 feet to a one-half inch iron rod with yellow cap stamped "JBI" set for corner;

South 89 degrees 00 minutes 37 seconds East, 116.00 feet to a one-half inch iron rod with yellow cap stamped "JBI" set for corner;

North 00 degrees 59 minutes 23 seconds East, 180.00 feet to a one-half inch iron rod with yellow cap stamped "JBI" set for corner;

North 89 degrees 00 minutes 37 seconds West, 116.00 feet to a one-half inch iron rod with yellow cap stamped "JBI" set for corner;

North 00 degrees 59 minutes 23 seconds East, 105.96 feet to a one-half inch iron rod with yellow cap stamped "JBI" set for corner;

North 45 degrees 14 minutes 16 seconds East, 14.33 feet to a one-half inch iron rod with yellow cap stamped "JBI" set for corner;

North 89 degrees 29 minutes 10 seconds East, 11.00 feet to a one-half inch iron rod with yellow cap stamped "JBI" set for corner;

North 00 degrees 30 minutes 50 seconds West, 50.00 feet to a one-half inch iron rod with yellow cap stamped "JBI" set for corner;

South 89 degrees 29 minutes 10 seconds West, 15.18 feet to a one-half inch iron rod with yellow cap stamped "JBI" set for corner;

North 00 degrees 30 minutes 50 seconds West, 116.00 feet to a one-half inch iron rod with yellow cap stamped "JBI" found for corner in the south line of Winchester Crossing, Phase 4, an addition to the City of Princeton as recorded in Volume 2021, Page 417, Official Public Records of Collin County, Texas;

THENCE North 89 degrees 29 minutes 10 seconds East, 445.00 feet along the south line of said Winchester Crossing, Phase 4 to a one-half inch iron rod with yellow cap stamped "JBI" found for corner in the west line of Winchester Crossing, Phase 5, an addition to the City of Princeton as recorded in Volume 2021, Page 761, Official Public Records of Collin County, Texas;

THENCE along the west line of said Winchester Crossing, Phase 5 as follows:

South 13 degrees 31 minutes 38 seconds East, 103.10 feet to a one-half inch iron rod with yellow cap stamped "JBI" found for corner;

South 13 degrees 47 minutes 48 seconds West, 180.77 feet to a one-half inch iron rod with yellow cap stamped "JBI" found for corner;

Southwesterly, 306.24 feet along a curve to the left having a central angle of 12 degrees 48 minutes 28 seconds, a radius of 1,370.00 feet, a tangent of 153.76 feet and whose chord bears South 07 degrees 23 minutes 36 seconds West, 305.61 feet to a one-half inch iron rod with yellow cap stamped "JBI" found for corner;

South 00 degrees 59 minutes 23 seconds West, 635.57 feet to a one-half inch iron rod with yellow cap stamped "JBI" found for corner;

Southwesterly, 495.93 feet along a curve to the right having a central angle of 25 degrees 08 minutes 45 seconds, a radius of 1,130.00 feet, a tangent of 252.03 feet and whose chord bears South 13 degrees 33 minutes 45 seconds West, 491.96 feet to a one-half inch iron rod with yellow cap stamped "JBI" found for corner;

Southwesterly, 552.32 feet along a curve to the left having a central angle of 24 degrees 55 minutes 04 seconds, a radius of 1,270.00 feet, a tangent of 280.60 feet and whose chord bears South 13

degrees 40 minutes 36 seconds West, 547.98 feet to a one-half inch iron rod with yellow cap stamped "JBI" found for corner;

THENCE North 88 degrees 48 minutes 10 seconds West, 374.20 feet to THE POINT OF BEGINNING and containing 1,122,329 square feet or 25.765 acres of land.

BASIS OF BEARING: The basis of bearing is based on the coordinate system (north central zone 4202 state plane coordinates, nad83), distances shown hereon are grid distance values.

PHASE 8 METES AND BOUNDS

LEGAL DESCRIPTION

Being a parcel of land located in Collin County Texas, a part of the Hardin Wright Survey, Abstract Number 957, and being a part of that called 177.029 acre tract of land described in Correction Special Warranty Deed to D.R. Horton-Texas, Ltd. as recorded in Document Number 20200220000240210, Official Public Records of Collin County, Texas, and being further described as follows:

BEGINNING at a five-eighths inch iron rod with cap stamped "BGT" found at the northwest corner of said 177.029 acre tract, said point being the southwest corner of Fire Station Number 3 Addition, an addition to the City of Princeton, Texas, as recorded in document number 2021-373, Official Public Records of Collin County, Texas, said point also being in the east line of that called 109.96 acre tract of land described in deed to AJE GROUP, LLC as recorded in Document Number 20170927001295150, Official Public Records of Collin County, Texas;

THENCE along the north line of said 177.029 acre tract as follows:

North 89 degrees 30 minutes 53 seconds East, 902.71 feet to a one-half inch iron rod with cap stamped "GEER" found for corner in the south line of Lot 2, Block G, Winchester Crossing, Phase 4 an addition to the City of Princeton, Texas, as recorded in document number 2021-417, Official Public Records of Collin County, Texas;

North 89 degrees 29 minutes 10 seconds East, 618.99 feet to a one-half inch iron rod with yellow cap stamped "JBI" found at the southeast corner of Lot 8, Block F of said Winchester Crossing, Phase 4;

THENCE South 00 degrees 30 minutes 50 seconds East, 116.00 feet to a one-half inch iron rod with yellow cap stamped "JBI" set for corner;

THENCE North 89 degrees 29 minutes 10 seconds East, 15.18 feet to a one-half inch iron rod with yellow cap stamped "JBI" set for corner;

THENCE South 00 degrees 30 minutes 50 seconds East, 50.00 feet to a one-half inch iron rod with yellow cap stamped "JBI" set for corner;

THENCE South 89 degrees 29 minutes 10 seconds West, 11.00 feet to a one-half inch iron rod with yellow cap stamped "JBI" set for corner;

THENCE South 45 degrees 14 minutes 16 seconds West, 14.33 feet to a one-half inch iron rod with yellow cap stamped "JBI" set for corner;

THENCE South 00 degrees 59 minutes 23 seconds West, 105.96 feet to a one-half inch iron rod with yellow cap stamped "JBI" set for corner;

THENCE South 89 degrees 00 minutes 37 seconds East, 116.00 feet to a one-half inch iron rod with yellow cap stamped "JBI" set for corner;

THENCE South 00 degrees 59 minutes 23 seconds West, 180.00 feet to a one-half inch iron rod with yellow cap stamped "JBI" set for corner;

THENCE North 89 degrees 00 minutes 37 seconds West, 116.00 feet to a one-half inch iron rod with yellow cap stamped "JBI" set for corner;

THENCE South 00 degrees 59 minutes 23 seconds West, 7.45 feet to a one-half inch iron rod with yellow cap stamped "JBI" set for corner;

THENCE North 89 degrees 00 minutes 37 seconds West, 50.00 feet to a one-half inch iron rod with yellow cap stamped "JBI" set for corner;

THENCE North 00 degrees 59 minutes 23 seconds East, 11.00 feet to a one-half inch iron rod with yellow cap stamped "JBI" set for corner;

THENCE North 44 degrees 45 minutes 44 seconds West, 13.96 feet to a one-half inch iron rod with yellow cap stamped "JBI" set for corner;

THENCE South 89 degrees 29 minutes 10 seconds West, 104.94 feet to a one-half inch iron rod with yellow cap stamped "JBI" set for corner;

THENCE South 01 degrees 19 minutes 01 seconds West, 415.34 feet to a one-half inch iron rod with yellow cap stamped "JBI" set for corner;

THENCE North 88 degrees 40 minutes 59 seconds West, 115.00 feet to a one-half inch iron rod with yellow cap stamped "JBI" set for corner;

THENCE South 01 degrees 19 minutes 01 seconds West, 57.33 feet to a one-half inch iron rod with yellow cap stamped "JBI" set for corner;

THENCE South 43 degrees 40 minutes 59 seconds East, 14.14 feet to a one-half inch iron rod with yellow cap stamped "JBI" set for corner;

THENCE South 88 degrees 40 minutes 59 seconds East, 11.00 feet to a one-half inch iron rod with yellow cap stamped "JBI" set for corner;

THENCE South 01 degrees 19 minutes 01 seconds West, 50.00 feet to a one-half inch iron rod with yellow cap stamped "JBI" set for corner;

THENCE North 88 degrees 40 minutes 59 seconds West, 25.41 feet to a one-half inch iron rod with yellow cap stamped "JBI" set for corner;

THENCE South 01 degrees 19 minutes 01 seconds West, 116.00 feet to a one-half inch iron rod with yellow cap stamped "JBI" set for corner in the south line of said 177.029 acre tract, said point also being in the north line of that called 187.250 acre tract of land described in deed to D.R. Horton-Texas, LTD as recorded in Document Number 20211201002443260, Official Public Records of Collin County, Texas;

THENCE North 88 degrees 40 minutes 59 seconds West, 1,252.49 feet along the south line of said 177.029 acre tract and along the north line of said 187.250 acre tract to a five-eighths inch iron found for corner in the west line of said 177.029 acre tract, said point also being the most northerly northwest corner of said 187.50 acre tract, said point also being in the east line of said 109.96 acre tract;

THENCE North 02 degrees 07 minutes 10 seconds East, 1,053.07 feet along the west line of said 177.029 acre tract and the east line of said 109.96 acre tract to the POINT OF BEGINNING and containing 1,536,174 square feet or 35.266 acres of land.

BASIS OF BEARING: The basis of bearing is based on the coordinate system (north central zone 4202 state plane coordinates, nad83), distances shown hereon are grid distance values.

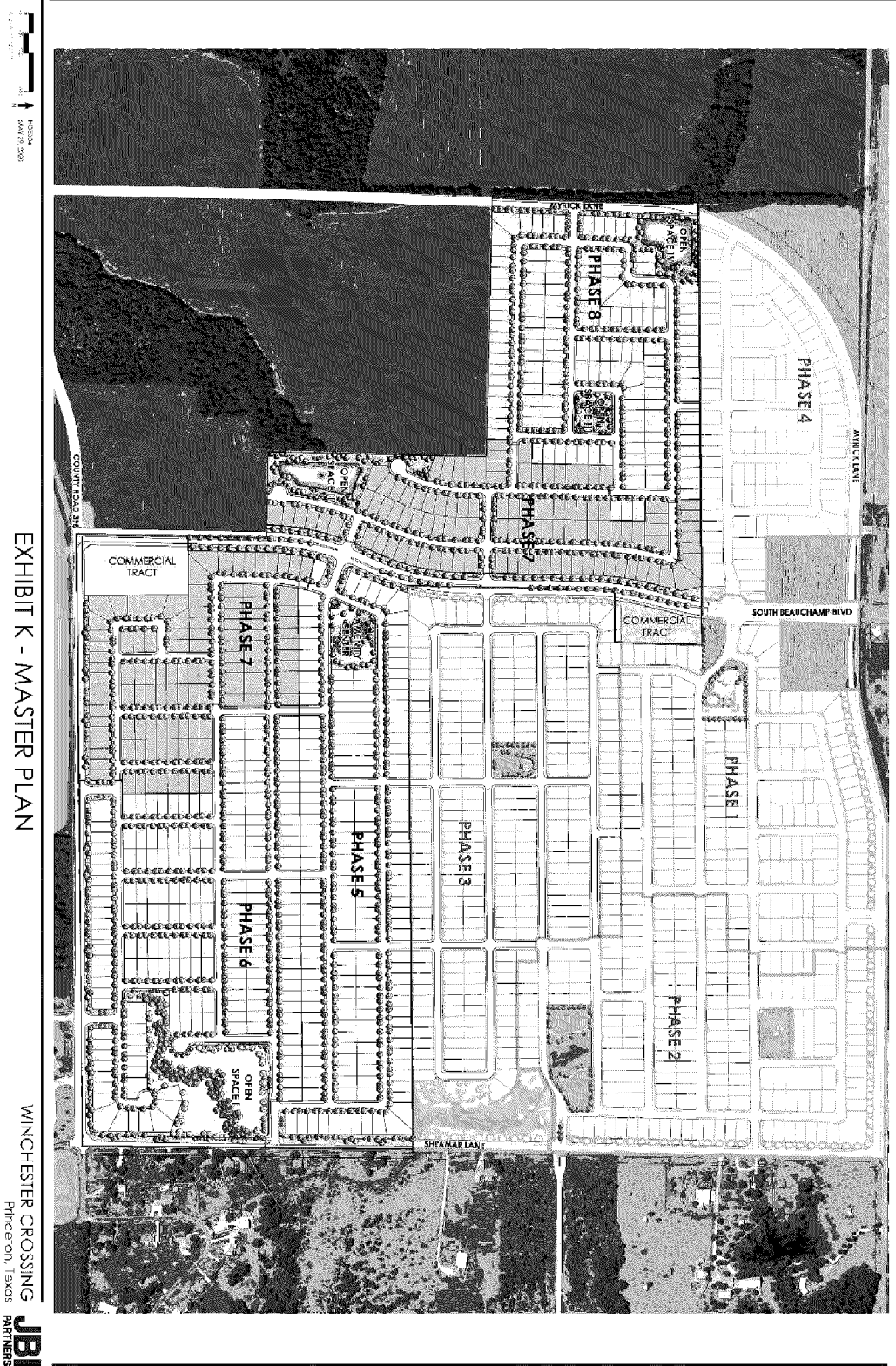


EXHIBIT K - MASTER PLAN

WINCHESTER CROSSING
Princeton, Texas
JBI
PARTNERS

APPENDIX B
ASSESSMENT ROLL SUMMARY – 2025-26

Parcel	Plat	Block	Lot	Lot Type	Assessment Per Unit	Principal	Interest	Administrative Expenses	Additional Interest	Total Annual Installment
2846568	Winchester Crossing Phase 5	A	1	55	\$17,360.22	\$310.39	\$813.31	\$128.20	\$86.80	\$1,338.70
2846569	Winchester Crossing Phase 5	A	2	55	\$17,360.22	\$310.39	\$813.31	\$128.20	\$86.80	\$1,338.70
2846570	Winchester Crossing Phase 5	A	3	55	\$17,360.22	\$310.39	\$813.31	\$128.20	\$86.80	\$1,338.70
2846571	Winchester Crossing Phase 5	A	4	55	\$17,360.22	\$310.39	\$813.31	\$128.20	\$86.80	\$1,338.70
2846572	Winchester Crossing Phase 5	A	5	55	\$17,360.22	\$310.39	\$813.31	\$128.20	\$86.80	\$1,338.70
2846573	Winchester Crossing Phase 5	A	6	55	\$17,360.22	\$310.39	\$813.31	\$128.20	\$86.80	\$1,338.70
2846574	Winchester Crossing Phase 5	A	7	55	\$17,360.22	\$310.39	\$813.31	\$128.20	\$86.80	\$1,338.70
2846575	Winchester Crossing Phase 5	A	8	55	\$17,360.22	\$310.39	\$813.31	\$128.20	\$86.80	\$1,338.70
2846576	Winchester Crossing Phase 5	A	9	55	\$17,360.22	\$310.39	\$813.31	\$128.20	\$86.80	\$1,338.70
2846577	Winchester Crossing Phase 5	A	10	55	\$17,360.22	\$310.39	\$813.31	\$128.20	\$86.80	\$1,338.70
2846578	Winchester Crossing Phase 5	A	11	55	\$17,360.22	\$310.39	\$813.31	\$128.20	\$86.80	\$1,338.70
2846579	Winchester Crossing Phase 5	A	12	55	\$17,360.22	\$310.39	\$813.31	\$128.20	\$86.80	\$1,338.70
2846580	Winchester Crossing Phase 5	A	13	55	\$17,360.22	\$310.39	\$813.31	\$128.20	\$86.80	\$1,338.70
2846581	Winchester Crossing Phase 5	A	14	55	\$17,360.22	\$310.39	\$813.31	\$128.20	\$86.80	\$1,338.70
2846582	Winchester Crossing Phase 5	A	15	55	\$17,360.22	\$310.39	\$813.31	\$128.20	\$86.80	\$1,338.70
2846583	Winchester Crossing Phase 5	A	16	55	\$17,360.22	\$310.39	\$813.31	\$128.20	\$86.80	\$1,338.70
2846584	Winchester Crossing Phase 5	A	17	55	\$17,360.22	\$310.39	\$813.31	\$128.20	\$86.80	\$1,338.70
2846585	Winchester Crossing Phase 5	A	18	55	\$17,360.22	\$310.39	\$813.31	\$128.20	\$86.80	\$1,338.70
2846586	Winchester Crossing Phase 5	A	19	55	\$17,360.22	\$310.39	\$813.31	\$128.20	\$86.80	\$1,338.70
2846587	Winchester Crossing Phase 5	A	20	55	\$17,360.22	\$310.39	\$813.31	\$128.20	\$86.80	\$1,338.70
2846588	Winchester Crossing Phase 5	A	21	55	\$17,360.22	\$310.39	\$813.31	\$128.20	\$86.80	\$1,338.70
2846589	Winchester Crossing Phase 5	A	22	55	\$8,680.11	\$155.19	\$406.65	\$64.10	\$43.40	\$669.35
2869411	Winchester Crossing Phase 5	A	22	55	\$8,680.11	\$155.19	\$406.65	\$64.10	\$43.40	\$669.35
2846590	Winchester Crossing Phase 5	A	23	55	\$17,360.22	\$310.39	\$813.31	\$128.20	\$86.80	\$1,338.70
2846591	Winchester Crossing Phase 5	A	24	55	\$17,360.22	\$310.39	\$813.31	\$128.20	\$86.80	\$1,338.70
2846592	Winchester Crossing Phase 5	A	25	55	\$17,360.22	\$310.39	\$813.31	\$128.20	\$86.80	\$1,338.70
2846593	Winchester Crossing Phase 5	A	26X	Non-Benefited	\$0.00	\$0.00	\$0.00	\$0.00	\$0.00	\$0.00
2846594	Winchester Crossing Phase 5	B	1	55	\$17,360.22	\$310.39	\$813.31	\$128.20	\$86.80	\$1,338.70
2846595	Winchester Crossing Phase 5	B	2	55	\$17,360.22	\$310.39	\$813.31	\$128.20	\$86.80	\$1,338.70
2846596	Winchester Crossing Phase 5	B	3	55	\$17,360.22	\$310.39	\$813.31	\$128.20	\$86.80	\$1,338.70
2846597	Winchester Crossing Phase 5	B	4	55	\$17,360.22	\$310.39	\$813.31	\$128.20	\$86.80	\$1,338.70
2846598	Winchester Crossing Phase 5	B	5	55	\$17,360.22	\$310.39	\$813.31	\$128.20	\$86.80	\$1,338.70
2846599	Winchester Crossing Phase 5	B	6	55	\$17,360.22	\$310.39	\$813.31	\$128.20	\$86.80	\$1,338.70
2846600	Winchester Crossing Phase 5	B	7	55	\$17,360.22	\$310.39	\$813.31	\$128.20	\$86.80	\$1,338.70
2846601	Winchester Crossing Phase 5	B	8	55	\$17,360.22	\$310.39	\$813.31	\$128.20	\$86.80	\$1,338.70
2846602	Winchester Crossing Phase 5	B	9	55	\$17,360.22	\$310.39	\$813.31	\$128.20	\$86.80	\$1,338.70
2846603	Winchester Crossing Phase 5	B	10	55	\$17,360.22	\$310.39	\$813.31	\$128.20	\$86.80	\$1,338.70

Parcel	Plat	Block	Lot	Lot Type	Assessment Per Unit	Principal	Interest	Administrative Expenses	Additional Interest	Total Annual Installment
2846604	Winchester Crossing Phase 5	B	11	55	\$17,360.22	\$310.39	\$813.31	\$128.20	\$86.80	\$1,338.70
2846605	Winchester Crossing Phase 5	B	12	55	\$17,360.22	\$310.39	\$813.31	\$128.20	\$86.80	\$1,338.70
2846606	Winchester Crossing Phase 5	B	13	55	\$17,360.22	\$310.39	\$813.31	\$128.20	\$86.80	\$1,338.70
2846607	Winchester Crossing Phase 5	B	14	55	\$17,360.22	\$310.39	\$813.31	\$128.20	\$86.80	\$1,338.70
2846608	Winchester Crossing Phase 5	C	1	55	\$17,360.22	\$310.39	\$813.31	\$128.20	\$86.80	\$1,338.70
2846609	Winchester Crossing Phase 5	C	2	55	\$17,360.22	\$310.39	\$813.31	\$128.20	\$86.80	\$1,338.70
2846610	Winchester Crossing Phase 5	C	3	55	\$17,360.22	\$310.39	\$813.31	\$128.20	\$86.80	\$1,338.70
2846611	Winchester Crossing Phase 5	C	4	55	\$17,360.22	\$310.39	\$813.31	\$128.20	\$86.80	\$1,338.70
2846612	Winchester Crossing Phase 5	C	5	55	\$17,360.22	\$310.39	\$813.31	\$128.20	\$86.80	\$1,338.70
2846613	Winchester Crossing Phase 5	C	6	55	\$17,360.22	\$310.39	\$813.31	\$128.20	\$86.80	\$1,338.70
2846614	Winchester Crossing Phase 5	C	7	55	\$17,360.22	\$310.39	\$813.31	\$128.20	\$86.80	\$1,338.70
2846615	Winchester Crossing Phase 5	C	8	55	\$17,360.22	\$310.39	\$813.31	\$128.20	\$86.80	\$1,338.70
2846616	Winchester Crossing Phase 5	C	9	55	\$17,360.22	\$310.39	\$813.31	\$128.20	\$86.80	\$1,338.70
2846617	Winchester Crossing Phase 5	C	10	55	\$17,360.22	\$310.39	\$813.31	\$128.20	\$86.80	\$1,338.70
2846618	Winchester Crossing Phase 5	C	11	55	\$17,360.22	\$310.39	\$813.31	\$128.20	\$86.80	\$1,338.70
2846619	Winchester Crossing Phase 5	C	12	55	\$17,360.22	\$310.39	\$813.31	\$128.20	\$86.80	\$1,338.70
2846620	Winchester Crossing Phase 5	C	13	55	\$17,360.22	\$310.39	\$813.31	\$128.20	\$86.80	\$1,338.70
2846621	Winchester Crossing Phase 5	C	14	55	\$17,360.22	\$310.39	\$813.31	\$128.20	\$86.80	\$1,338.70
2846622	Winchester Crossing Phase 5	C	15	55	\$17,360.22	\$310.39	\$813.31	\$128.20	\$86.80	\$1,338.70
2846623	Winchester Crossing Phase 5	C	16	55	\$17,360.22	\$310.39	\$813.31	\$128.20	\$86.80	\$1,338.70
2846624	Winchester Crossing Phase 5	C	17	55	\$17,360.22	\$310.39	\$813.31	\$128.20	\$86.80	\$1,338.70
2846625	Winchester Crossing Phase 5	C	18	55	\$17,360.22	\$310.39	\$813.31	\$128.20	\$86.80	\$1,338.70
2846626	Winchester Crossing Phase 5	C	19	55	\$17,360.22	\$310.39	\$813.31	\$128.20	\$86.80	\$1,338.70
2846627	Winchester Crossing Phase 5	C	20	55	\$17,360.22	\$310.39	\$813.31	\$128.20	\$86.80	\$1,338.70
2846628	Winchester Crossing Phase 5	C	21X	Non-Benefited	\$0.00	\$0.00	\$0.00	\$0.00	\$0.00	\$0.00
2846629	Winchester Crossing Phase 5	D	1	55	\$17,360.22	\$310.39	\$813.31	\$128.20	\$86.80	\$1,338.70
2846630	Winchester Crossing Phase 5	D	2	55	\$17,360.22	\$310.39	\$813.31	\$128.20	\$86.80	\$1,338.70
2846631	Winchester Crossing Phase 5	D	3	55	\$17,360.22	\$310.39	\$813.31	\$128.20	\$86.80	\$1,338.70
2846632	Winchester Crossing Phase 5	D	4	55	\$17,360.22	\$310.39	\$813.31	\$128.20	\$86.80	\$1,338.70
2846633	Winchester Crossing Phase 5	D	5	55	\$17,360.22	\$310.39	\$813.31	\$128.20	\$86.80	\$1,338.70
2846634	Winchester Crossing Phase 5	D	6	55	\$17,360.22	\$310.39	\$813.31	\$128.20	\$86.80	\$1,338.70
2846635	Winchester Crossing Phase 5	D	7	55	\$17,360.22	\$310.39	\$813.31	\$128.20	\$86.80	\$1,338.70
2846636	Winchester Crossing Phase 5	D	8	55	\$17,360.22	\$310.39	\$813.31	\$128.20	\$86.80	\$1,338.70
2846637	Winchester Crossing Phase 5	D	9	55	\$17,360.22	\$310.39	\$813.31	\$128.20	\$86.80	\$1,338.70
2846638	Winchester Crossing Phase 5	D	10	55	\$17,360.22	\$310.39	\$813.31	\$128.20	\$86.80	\$1,338.70
2846639	Winchester Crossing Phase 5	D	11	55	\$17,360.22	\$310.39	\$813.31	\$128.20	\$86.80	\$1,338.70
2846640	Winchester Crossing Phase 5	D	12	55	\$17,360.22	\$310.39	\$813.31	\$128.20	\$86.80	\$1,338.70

Parcel	Plat	Block	Lot	Lot Type	Assessment Per Unit	Principal	Interest	Administrative Expenses	Additional Interest	Total Annual Installment
2846641	Winchester Crossing Phase 5	D	13	55	\$17,360.22	\$310.39	\$813.31	\$128.20	\$86.80	\$1,338.70
2846642	Winchester Crossing Phase 5	D	14	55	\$17,360.22	\$310.39	\$813.31	\$128.20	\$86.80	\$1,338.70
2846643	Winchester Crossing Phase 5	D	15	55	\$17,360.22	\$310.39	\$813.31	\$128.20	\$86.80	\$1,338.70
2846644	Winchester Crossing Phase 5	D	16	55	\$17,360.22	\$310.39	\$813.31	\$128.20	\$86.80	\$1,338.70
2846645	Winchester Crossing Phase 5	D	17	55	\$17,360.22	\$310.39	\$813.31	\$128.20	\$86.80	\$1,338.70
2846646	Winchester Crossing Phase 5	D	18	55	\$17,360.22	\$310.39	\$813.31	\$128.20	\$86.80	\$1,338.70
2846647	Winchester Crossing Phase 5	D	19	55	\$17,360.22	\$310.39	\$813.31	\$128.20	\$86.80	\$1,338.70
2846648	Winchester Crossing Phase 5	D	20	55	\$8,680.11	\$155.19	\$406.65	\$64.10	\$43.40	\$669.35
2877705	Winchester Crossing Phase 5	D	20	55	\$8,680.11	\$155.19	\$406.65	\$64.10	\$43.40	\$669.35
2846649	Winchester Crossing Phase 5	D	21X	Non-Benefited	\$0.00	\$0.00	\$0.00	\$0.00	\$0.00	\$0.00
2846650	Winchester Crossing Phase 5	E	1	55	\$17,360.22	\$310.39	\$813.31	\$128.20	\$86.80	\$1,338.70
2846651	Winchester Crossing Phase 5	E	2	55	\$17,360.22	\$310.39	\$813.31	\$128.20	\$86.80	\$1,338.70
2846652	Winchester Crossing Phase 5	E	3	55	\$17,360.22	\$310.39	\$813.31	\$128.20	\$86.80	\$1,338.70
2846653	Winchester Crossing Phase 5	E	4	55	\$17,360.22	\$310.39	\$813.31	\$128.20	\$86.80	\$1,338.70
2846654	Winchester Crossing Phase 5	E	5	55	\$17,360.22	\$310.39	\$813.31	\$128.20	\$86.80	\$1,338.70
2846655	Winchester Crossing Phase 5	E	6	55	\$17,360.22	\$310.39	\$813.31	\$128.20	\$86.80	\$1,338.70
2846656	Winchester Crossing Phase 5	E	7	55	\$17,360.22	\$310.39	\$813.31	\$128.20	\$86.80	\$1,338.70
2846657	Winchester Crossing Phase 5	E	8	55	\$17,360.22	\$310.39	\$813.31	\$128.20	\$86.80	\$1,338.70
2846658	Winchester Crossing Phase 5	E	9	55	\$17,360.22	\$310.39	\$813.31	\$128.20	\$86.80	\$1,338.70
2846659	Winchester Crossing Phase 5	E	10	55	\$8,680.11	\$155.19	\$406.65	\$64.10	\$43.40	\$669.35
2869398	Winchester Crossing Phase 5	E	10	55	\$8,680.11	\$155.19	\$406.65	\$64.10	\$43.40	\$669.35
2846660	Winchester Crossing Phase 5	E	11	55	\$17,360.22	\$310.39	\$813.31	\$128.20	\$86.80	\$1,338.70
2846661	Winchester Crossing Phase 5	E	12	55	\$17,360.22	\$310.39	\$813.31	\$128.20	\$86.80	\$1,338.70
2846662	Winchester Crossing Phase 5	E	13	55	\$17,360.22	\$310.39	\$813.31	\$128.20	\$86.80	\$1,338.70
2846663	Winchester Crossing Phase 5	E	14	55	\$17,360.22	\$310.39	\$813.31	\$128.20	\$86.80	\$1,338.70
2846664	Winchester Crossing Phase 5	E	15	55	\$17,360.22	\$310.39	\$813.31	\$128.20	\$86.80	\$1,338.70
2846665	Winchester Crossing Phase 5	E	16	55	\$17,360.22	\$310.39	\$813.31	\$128.20	\$86.80	\$1,338.70
2846666	Winchester Crossing Phase 5	E	17	55	\$17,360.22	\$310.39	\$813.31	\$128.20	\$86.80	\$1,338.70
2846667	Winchester Crossing Phase 5	E	18	55	\$17,360.22	\$310.39	\$813.31	\$128.20	\$86.80	\$1,338.70
2846668	Winchester Crossing Phase 5	E	19	55	\$17,360.22	\$310.39	\$813.31	\$128.20	\$86.80	\$1,338.70
2846669	Winchester Crossing Phase 5	E	20	55	\$17,360.22	\$310.39	\$813.31	\$128.20	\$86.80	\$1,338.70
2846670	Winchester Crossing Phase 5	E	21	55	\$17,360.22	\$310.39	\$813.31	\$128.20	\$86.80	\$1,338.70
2846671	Winchester Crossing Phase 5	E	22	55	\$17,360.22	\$310.39	\$813.31	\$128.20	\$86.80	\$1,338.70
2846672	Winchester Crossing Phase 5	E	23	55	\$17,360.22	\$310.39	\$813.31	\$128.20	\$86.80	\$1,338.70
2846673	Winchester Crossing Phase 5	E	24	55	\$17,360.22	\$310.39	\$813.31	\$128.20	\$86.80	\$1,338.70
2846674	Winchester Crossing Phase 5	E	25	55	\$17,360.22	\$310.39	\$813.31	\$128.20	\$86.80	\$1,338.70
2846675	Winchester Crossing Phase 5	E	26	55	\$17,360.22	\$310.39	\$813.31	\$128.20	\$86.80	\$1,338.70

Parcel	Plat	Block	Lot	Lot Type	Assessment Per Unit	Principal	Interest	Administrative Expenses	Additional Interest	Total Annual Installment
2846676	Winchester Crossing Phase 5	E	27	55	\$17,360.22	\$310.39	\$813.31	\$128.20	\$86.80	\$1,338.70
2846677	Winchester Crossing Phase 5	E	28	55	\$17,360.22	\$310.39	\$813.31	\$128.20	\$86.80	\$1,338.70
2846678	Winchester Crossing Phase 5	F	1	55	\$17,360.22	\$310.39	\$813.31	\$128.20	\$86.80	\$1,338.70
2846679	Winchester Crossing Phase 5	F	2	55	\$17,360.22	\$310.39	\$813.31	\$128.20	\$86.80	\$1,338.70
2846680	Winchester Crossing Phase 5	F	3	55	\$17,360.22	\$310.39	\$813.31	\$128.20	\$86.80	\$1,338.70
2846681	Winchester Crossing Phase 5	F	4	55	\$17,360.22	\$310.39	\$813.31	\$128.20	\$86.80	\$1,338.70
2846682	Winchester Crossing Phase 5	F	5	55	\$17,360.22	\$310.39	\$813.31	\$128.20	\$86.80	\$1,338.70
2846683	Winchester Crossing Phase 5	F	6	55	\$17,360.22	\$310.39	\$813.31	\$128.20	\$86.80	\$1,338.70
2846684	Winchester Crossing Phase 5	F	7	55	\$17,360.22	\$310.39	\$813.31	\$128.20	\$86.80	\$1,338.70
2846685	Winchester Crossing Phase 5	F	8	55	\$17,360.22	\$310.39	\$813.31	\$128.20	\$86.80	\$1,338.70
2846686	Winchester Crossing Phase 5	F	9	55	\$17,360.22	\$310.39	\$813.31	\$128.20	\$86.80	\$1,338.70
2846687	Winchester Crossing Phase 5	F	10	55	\$17,360.22	\$310.39	\$813.31	\$128.20	\$86.80	\$1,338.70
2846688	Winchester Crossing Phase 5	F	11	55	\$17,360.22	\$310.39	\$813.31	\$128.20	\$86.80	\$1,338.70
2846689	Winchester Crossing Phase 5	F	12	55	\$17,360.22	\$310.39	\$813.31	\$128.20	\$86.80	\$1,338.70
2846690	Winchester Crossing Phase 5	F	13	55	\$17,360.22	\$310.39	\$813.31	\$128.20	\$86.80	\$1,338.70
2846691	Winchester Crossing Phase 5	F	14	55	\$17,360.22	\$310.39	\$813.31	\$128.20	\$86.80	\$1,338.70
2846692	Winchester Crossing Phase 5	F	15	55	\$17,360.22	\$310.39	\$813.31	\$128.20	\$86.80	\$1,338.70
2846693	Winchester Crossing Phase 5	F	16	55	\$17,360.22	\$310.39	\$813.31	\$128.20	\$86.80	\$1,338.70
2846694	Winchester Crossing Phase 5	F	17	55	\$17,360.22	\$310.39	\$813.31	\$128.20	\$86.80	\$1,338.70
2846695	Winchester Crossing Phase 5	F	18	55	\$17,360.22	\$310.39	\$813.31	\$128.20	\$86.80	\$1,338.70
2846696	Winchester Crossing Phase 5	F	19	55	\$17,360.22	\$310.39	\$813.31	\$128.20	\$86.80	\$1,338.70
2846697	Winchester Crossing Phase 5	F	20	55	\$17,360.22	\$310.39	\$813.31	\$128.20	\$86.80	\$1,338.70
2846698	Winchester Crossing Phase 5	F	21	55	\$17,360.22	\$310.39	\$813.31	\$128.20	\$86.80	\$1,338.70
2846699	Winchester Crossing Phase 5	F	22	55	\$17,360.22	\$310.39	\$813.31	\$128.20	\$86.80	\$1,338.70
2846700	Winchester Crossing Phase 5	F	23	55	\$17,360.22	\$310.39	\$813.31	\$128.20	\$86.80	\$1,338.70
2846701	Winchester Crossing Phase 5	F	24	55	\$17,360.22	\$310.39	\$813.31	\$128.20	\$86.80	\$1,338.70
2846702	Winchester Crossing Phase 5	F	25	55	\$17,360.22	\$310.39	\$813.31	\$128.20	\$86.80	\$1,338.70
2846703	Winchester Crossing Phase 5	F	26	55	\$17,360.22	\$310.39	\$813.31	\$128.20	\$86.80	\$1,338.70
2846704	Winchester Crossing Phase 5	G	1	55	\$17,360.22	\$310.39	\$813.31	\$128.20	\$86.80	\$1,338.70
2846705	Winchester Crossing Phase 5	G	2	55	\$17,360.22	\$310.39	\$813.31	\$128.20	\$86.80	\$1,338.70
2846706	Winchester Crossing Phase 5	G	3	55	\$17,360.22	\$310.39	\$813.31	\$128.20	\$86.80	\$1,338.70
2846707	Winchester Crossing Phase 5	G	4	55	\$17,360.22	\$310.39	\$813.31	\$128.20	\$86.80	\$1,338.70
2846708	Winchester Crossing Phase 5	G	5	55	\$17,360.22	\$310.39	\$813.31	\$128.20	\$86.80	\$1,338.70
2846709	Winchester Crossing Phase 5	G	6	55	\$17,360.22	\$310.39	\$813.31	\$128.20	\$86.80	\$1,338.70
2846710	Winchester Crossing Phase 5	G	7	55	\$17,360.22	\$310.39	\$813.31	\$128.20	\$86.80	\$1,338.70
2846711	Winchester Crossing Phase 5	G	8	55	\$17,360.22	\$310.39	\$813.31	\$128.20	\$86.80	\$1,338.70
2846712	Winchester Crossing Phase 5	G	9	55	\$17,360.22	\$310.39	\$813.31	\$128.20	\$86.80	\$1,338.70

Parcel	Plat	Block	Lot	Lot Type	Assessment Per Unit	Principal	Interest	Administrative Expenses	Additional Interest	Total Annual Installment
2846713	Winchester Crossing Phase 5	G	10	55	\$17,360.22	\$310.39	\$813.31	\$128.20	\$86.80	\$1,338.70
2846714	Winchester Crossing Phase 5	G	11	55	\$17,360.22	\$310.39	\$813.31	\$128.20	\$86.80	\$1,338.70
2846715	Winchester Crossing Phase 5	G	12	55	\$17,360.22	\$310.39	\$813.31	\$128.20	\$86.80	\$1,338.70
2846716	Winchester Crossing Phase 5	G	13	55	\$17,360.22	\$310.39	\$813.31	\$128.20	\$86.80	\$1,338.70
2846717	Winchester Crossing Phase 5	G	14	55	\$17,360.22	\$310.39	\$813.31	\$128.20	\$86.80	\$1,338.70
2846718	Winchester Crossing Phase 5	G	15	55	\$17,360.22	\$310.39	\$813.31	\$128.20	\$86.80	\$1,338.70
2846719	Winchester Crossing Phase 5	G	16	55	\$17,360.22	\$310.39	\$813.31	\$128.20	\$86.80	\$1,338.70
2846720	Winchester Crossing Phase 5	G	17	55	\$17,360.22	\$310.39	\$813.31	\$128.20	\$86.80	\$1,338.70
2846721	Winchester Crossing Phase 5	G	18	55	\$17,360.22	\$310.39	\$813.31	\$128.20	\$86.80	\$1,338.70
2846722	Winchester Crossing Phase 5	G	19	55	\$17,360.22	\$310.39	\$813.31	\$128.20	\$86.80	\$1,338.70
2846723	Winchester Crossing Phase 5	G	20	55	\$17,360.22	\$310.39	\$813.31	\$128.20	\$86.80	\$1,338.70
2846724	Winchester Crossing Phase 5	H	1	55	\$17,360.22	\$310.39	\$813.31	\$128.20	\$86.80	\$1,338.70
2846725	Winchester Crossing Phase 5	H	2	55	\$17,360.22	\$310.39	\$813.31	\$128.20	\$86.80	\$1,338.70
2846726	Winchester Crossing Phase 5	H	3	55	\$17,360.22	\$310.39	\$813.31	\$128.20	\$86.80	\$1,338.70
2846727	Winchester Crossing Phase 5	H	4	55	\$17,360.22	\$310.39	\$813.31	\$128.20	\$86.80	\$1,338.70
2846728	Winchester Crossing Phase 5	H	5	55	\$17,360.22	\$310.39	\$813.31	\$128.20	\$86.80	\$1,338.70
2846729	Winchester Crossing Phase 5	H	6	55	\$17,360.22	\$310.39	\$813.31	\$128.20	\$86.80	\$1,338.70
2846730	Winchester Crossing Phase 5	H	7	55	\$17,360.22	\$310.39	\$813.31	\$128.20	\$86.80	\$1,338.70
2846731	Winchester Crossing Phase 5	H	8	55	\$17,360.22	\$310.39	\$813.31	\$128.20	\$86.80	\$1,338.70
2846732	Winchester Crossing Phase 5	H	9	55	\$17,360.22	\$310.39	\$813.31	\$128.20	\$86.80	\$1,338.70
2846733	Winchester Crossing Phase 5	H	10	55	\$17,360.22	\$310.39	\$813.31	\$128.20	\$86.80	\$1,338.70
2846734	Winchester Crossing Phase 5	H	11	55	\$17,360.22	\$310.39	\$813.31	\$128.20	\$86.80	\$1,338.70
2846735	Winchester Crossing Phase 5	H	12	55	\$17,360.22	\$310.39	\$813.31	\$128.20	\$86.80	\$1,338.70
2846736	Winchester Crossing Phase 5	H	13	55	\$17,360.22	\$310.39	\$813.31	\$128.20	\$86.80	\$1,338.70
2846737	Winchester Crossing Phase 5	H	14	55	\$17,360.22	\$310.39	\$813.31	\$128.20	\$86.80	\$1,338.70
2846738	Winchester Crossing Phase 5	I	1	55	\$17,360.22	\$310.39	\$813.31	\$128.20	\$86.80	\$1,338.70
2846739	Winchester Crossing Phase 5	I	2	55	\$17,360.22	\$310.39	\$813.31	\$128.20	\$86.80	\$1,338.70
2846740	Winchester Crossing Phase 5	I	3	55	\$17,360.22	\$310.39	\$813.31	\$128.20	\$86.80	\$1,338.70
2846741	Winchester Crossing Phase 5	I	4	55	\$17,360.22	\$310.39	\$813.31	\$128.20	\$86.80	\$1,338.70
2846742	Winchester Crossing Phase 5	I	5	55	\$17,360.22	\$310.39	\$813.31	\$128.20	\$86.80	\$1,338.70
2846743	Winchester Crossing Phase 5	I	6	55	\$17,360.22	\$310.39	\$813.31	\$128.20	\$86.80	\$1,338.70
2846744	Winchester Crossing Phase 5	I	7	55	\$8,680.11	\$155.19	\$406.65	\$64.10	\$43.40	\$669.35
2873525	Winchester Crossing Phase 5	I	8	55	\$8,680.11	\$155.19	\$406.65	\$64.10	\$43.40	\$669.35
2846745	Winchester Crossing Phase 5	I	9	55	\$17,360.22	\$310.39	\$813.31	\$128.20	\$86.80	\$1,338.70
2846746	Winchester Crossing Phase 5	I	10	55	\$17,360.22	\$310.39	\$813.31	\$128.20	\$86.80	\$1,338.70
2846747	Winchester Crossing Phase 5	I	11	55	\$17,360.22	\$310.39	\$813.31	\$128.20	\$86.80	\$1,338.70
2846748	Winchester Crossing Phase 5	J	1	55	\$17,360.22	\$310.39	\$813.31	\$128.20	\$86.80	\$1,338.70

Parcel	Plat	Block	Lot	Lot Type	Assessment Per Unit	Principal	Interest	Administrative Expenses	Additional Interest	Total Annual Installment
2846749	Winchester Crossing Phase 5	J	44X	Non-Benefited	\$0.00	\$0.00	\$0.00	\$0.00	\$0.00	\$0.00
2846750	Winchester Crossing Phase 5	W	7X	Non-Benefited	\$0.00	\$0.00	\$0.00	\$0.00	\$0.00	\$0.00
2846751	Winchester Crossing Phase 5	Y	11X	Non-Benefited	\$0.00	\$0.00	\$0.00	\$0.00	\$0.00	\$0.00
2846752	Winchester Crossing Phase 5	Z	32X	Non-Benefited	\$0.00	\$0.00	\$0.00	\$0.00	\$0.00	\$0.00
2846753	Winchester Crossing Phase 5	HH	1X	Non-Benefited	\$0.00	\$0.00	\$0.00	\$0.00	\$0.00	\$0.00
2849448	Winchester Crossing Phase 8	Z	24	55	\$17,360.22	\$310.39	\$813.31	\$128.20	\$86.80	\$1,338.70
2849449	Winchester Crossing Phase 8	Z	25	55	\$17,360.22	\$310.39	\$813.31	\$128.20	\$86.80	\$1,338.70
2849450	Winchester Crossing Phase 8	Z	26	55	\$17,360.22	\$310.39	\$813.31	\$128.20	\$86.80	\$1,338.70
2849451	Winchester Crossing Phase 8	Z	27	55	\$17,360.22	\$310.39	\$813.31	\$128.20	\$86.80	\$1,338.70
2849452	Winchester Crossing Phase 8	Z	28	55	\$17,360.22	\$310.39	\$813.31	\$128.20	\$86.80	\$1,338.70
2849453	Winchester Crossing Phase 8	Z	29	55	\$17,360.22	\$310.39	\$813.31	\$128.20	\$86.80	\$1,338.70
2849454	Winchester Crossing Phase 8	Z	30	55	\$17,360.22	\$310.39	\$813.31	\$128.20	\$86.80	\$1,338.70
2849455	Winchester Crossing Phase 8	Z	31	55	\$17,360.22	\$310.39	\$813.31	\$128.20	\$86.80	\$1,338.70
2849456	Winchester Crossing Phase 8	AA	18	55	\$17,360.22	\$310.39	\$813.31	\$128.20	\$86.80	\$1,338.70
2849457	Winchester Crossing Phase 8	AA	19	55	\$17,360.22	\$310.39	\$813.31	\$128.20	\$86.80	\$1,338.70
2849458	Winchester Crossing Phase 8	AA	20	55	\$17,360.22	\$310.39	\$813.31	\$128.20	\$86.80	\$1,338.70
2849459	Winchester Crossing Phase 8	BB	9	55	\$17,360.22	\$310.39	\$813.31	\$128.20	\$86.80	\$1,338.70
2849460	Winchester Crossing Phase 8	BB	10	55	\$17,360.22	\$310.39	\$813.31	\$128.20	\$86.80	\$1,338.70
2849461	Winchester Crossing Phase 8	BB	11	55	\$17,360.22	\$310.39	\$813.31	\$128.20	\$86.80	\$1,338.70
2849462	Winchester Crossing Phase 8	BB	12	55	\$17,360.22	\$310.39	\$813.31	\$128.20	\$86.80	\$1,338.70
2849463	Winchester Crossing Phase 8	BB	13	55	\$17,360.22	\$310.39	\$813.31	\$128.20	\$86.80	\$1,338.70
2849464	Winchester Crossing Phase 8	BB	14	55	\$17,360.22	\$310.39	\$813.31	\$128.20	\$86.80	\$1,338.70
2849465	Winchester Crossing Phase 8	BB	15	55	\$17,360.22	\$310.39	\$813.31	\$128.20	\$86.80	\$1,338.70
2849466	Winchester Crossing Phase 8	CC	10	55	\$17,360.22	\$310.39	\$813.31	\$128.20	\$86.80	\$1,338.70
2849467	Winchester Crossing Phase 8	CC	11	55	\$17,360.22	\$310.39	\$813.31	\$128.20	\$86.80	\$1,338.70
2849468	Winchester Crossing Phase 8	CC	12	55	\$17,360.22	\$310.39	\$813.31	\$128.20	\$86.80	\$1,338.70
2849469	Winchester Crossing Phase 8	CC	13	55	\$17,360.22	\$310.39	\$813.31	\$128.20	\$86.80	\$1,338.70
2849470	Winchester Crossing Phase 8	CC	14	55	\$17,360.22	\$310.39	\$813.31	\$128.20	\$86.80	\$1,338.70
2849471	Winchester Crossing Phase 8	CC	15	55	\$17,360.22	\$310.39	\$813.31	\$128.20	\$86.80	\$1,338.70
2849472	Winchester Crossing Phase 8	CC	16	55	\$17,360.22	\$310.39	\$813.31	\$128.20	\$86.80	\$1,338.70
2849473	Winchester Crossing Phase 8	CC	17	55	\$17,360.22	\$310.39	\$813.31	\$128.20	\$86.80	\$1,338.70
2849474	Winchester Crossing Phase 8	CC	18	55	\$17,360.22	\$310.39	\$813.31	\$128.20	\$86.80	\$1,338.70
2849475	Winchester Crossing Phase 8	CC	19	55	\$17,360.22	\$310.39	\$813.31	\$128.20	\$86.80	\$1,338.70
2849476	Winchester Crossing Phase 8	CC	20	55	\$17,360.22	\$310.39	\$813.31	\$128.20	\$86.80	\$1,338.70
2849477	Winchester Crossing Phase 8	CC	21	55	\$17,360.22	\$310.39	\$813.31	\$128.20	\$86.80	\$1,338.70
2849478	Winchester Crossing Phase 8	CC	22	55	\$17,360.22	\$310.39	\$813.31	\$128.20	\$86.80	\$1,338.70
2849479	Winchester Crossing Phase 8	CC	23	55	\$17,360.22	\$310.39	\$813.31	\$128.20	\$86.80	\$1,338.70

Parcel	Plat	Block	Lot	Lot Type	Assessment Per Unit	Principal	Interest	Administrative Expenses	Additional Interest	Total Annual Installment
2849480	Winchester Crossing Phase 8	CC	24	55	\$17,360.22	\$310.39	\$813.31	\$128.20	\$86.80	\$1,338.70
2849481	Winchester Crossing Phase 8	CC	25	55	\$17,360.22	\$310.39	\$813.31	\$128.20	\$86.80	\$1,338.70
2849482	Winchester Crossing Phase 8	CC	26	55	\$17,360.22	\$310.39	\$813.31	\$128.20	\$86.80	\$1,338.70
2849483	Winchester Crossing Phase 8	CC	27	55	\$17,360.22	\$310.39	\$813.31	\$128.20	\$86.80	\$1,338.70
2849484	Winchester Crossing Phase 8	CC	28	55	\$17,360.22	\$310.39	\$813.31	\$128.20	\$86.80	\$1,338.70
2849485	Winchester Crossing Phase 8	CC	29	55	\$17,360.22	\$310.39	\$813.31	\$128.20	\$86.80	\$1,338.70
2849486	Winchester Crossing Phase 8	CC	30	55	\$17,360.22	\$310.39	\$813.31	\$128.20	\$86.80	\$1,338.70
2849487	Winchester Crossing Phase 8	CC	31	55	\$17,360.22	\$310.39	\$813.31	\$128.20	\$86.80	\$1,338.70
2849488	Winchester Crossing Phase 8	CC	32	55	\$17,360.22	\$310.39	\$813.31	\$128.20	\$86.80	\$1,338.70
2849489	Winchester Crossing Phase 8	CC	33	55	\$17,360.22	\$310.39	\$813.31	\$128.20	\$86.80	\$1,338.70
2849490	Winchester Crossing Phase 8	CC	34X	Non-Benefited	\$0.00	\$0.00	\$0.00	\$0.00	\$0.00	\$0.00
2849491	Winchester Crossing Phase 8	DD	1	55	\$17,360.22	\$310.39	\$813.31	\$128.20	\$86.80	\$1,338.70
2849492	Winchester Crossing Phase 8	DD	2	55	\$17,360.22	\$310.39	\$813.31	\$128.20	\$86.80	\$1,338.70
2849493	Winchester Crossing Phase 8	DD	3	55	\$8,680.11	\$155.19	\$406.65	\$64.10	\$43.40	\$669.35
2884449	Winchester Crossing Phase 8	DD	3	55	\$8,680.11	\$155.19	\$406.65	\$64.10	\$43.40	\$669.35
2849494	Winchester Crossing Phase 8	DD	4	55	\$17,360.22	\$310.39	\$813.31	\$128.20	\$86.80	\$1,338.70
2849495	Winchester Crossing Phase 8	DD	5	55	\$17,360.22	\$310.39	\$813.31	\$128.20	\$86.80	\$1,338.70
2849496	Winchester Crossing Phase 8	DD	6	55	\$17,360.22	\$310.39	\$813.31	\$128.20	\$86.80	\$1,338.70
2849497	Winchester Crossing Phase 8	DD	7	55	\$17,360.22	\$310.39	\$813.31	\$128.20	\$86.80	\$1,338.70
2849498	Winchester Crossing Phase 8	DD	8	55	\$17,360.22	\$310.39	\$813.31	\$128.20	\$86.80	\$1,338.70
2849499	Winchester Crossing Phase 8	DD	9	55	\$17,360.22	\$310.39	\$813.31	\$128.20	\$86.80	\$1,338.70
2849500	Winchester Crossing Phase 8	DD	10	55	\$17,360.22	\$310.39	\$813.31	\$128.20	\$86.80	\$1,338.70
2849501	Winchester Crossing Phase 8	DD	11	55	\$17,360.22	\$310.39	\$813.31	\$128.20	\$86.80	\$1,338.70
2849502	Winchester Crossing Phase 8	DD	12	55	\$17,360.22	\$310.39	\$813.31	\$128.20	\$86.80	\$1,338.70
2849503	Winchester Crossing Phase 8	DD	13	55	\$17,360.22	\$310.39	\$813.31	\$128.20	\$86.80	\$1,338.70
2849504	Winchester Crossing Phase 8	DD	14	55	\$17,360.22	\$310.39	\$813.31	\$128.20	\$86.80	\$1,338.70
2849505	Winchester Crossing Phase 8	DD	15	55	\$17,360.22	\$310.39	\$813.31	\$128.20	\$86.80	\$1,338.70
2849506	Winchester Crossing Phase 8	DD	16	55	\$17,360.22	\$310.39	\$813.31	\$128.20	\$86.80	\$1,338.70
2849507	Winchester Crossing Phase 8	DD	17	55	\$17,360.22	\$310.39	\$813.31	\$128.20	\$86.80	\$1,338.70
2849508	Winchester Crossing Phase 8	DD	18	55	\$17,360.22	\$310.39	\$813.31	\$128.20	\$86.80	\$1,338.70
2849509	Winchester Crossing Phase 8	DD	19X	Non-Benefited	\$0.00	\$0.00	\$0.00	\$0.00	\$0.00	\$0.00
2849510	Winchester Crossing Phase 8	DD	20X	Non-Benefited	\$0.00	\$0.00	\$0.00	\$0.00	\$0.00	\$0.00
2849511	Winchester Crossing Phase 8	EE	1	55	\$17,360.22	\$310.39	\$813.31	\$128.20	\$86.80	\$1,338.70
2849512	Winchester Crossing Phase 8	EE	2	55	\$17,360.22	\$310.39	\$813.31	\$128.20	\$86.80	\$1,338.70
2849513	Winchester Crossing Phase 8	EE	3	55	\$17,360.22	\$310.39	\$813.31	\$128.20	\$86.80	\$1,338.70
2849514	Winchester Crossing Phase 8	EE	4	55	\$17,360.22	\$310.39	\$813.31	\$128.20	\$86.80	\$1,338.70
2849515	Winchester Crossing Phase 8	EE	5	55	\$17,360.22	\$310.39	\$813.31	\$128.20	\$86.80	\$1,338.70

Parcel	Plat	Block	Lot	Lot Type	Assessment Per Unit	Principal	Interest	Administrative Expenses	Additional Interest	Total Annual Installment
2849516	Winchester Crossing Phase 8	EE	6	55	\$17,360.22	\$310.39	\$813.31	\$128.20	\$86.80	\$1,338.70
2849517	Winchester Crossing Phase 8	EE	7	55	\$17,360.22	\$310.39	\$813.31	\$128.20	\$86.80	\$1,338.70
2849518	Winchester Crossing Phase 8	EE	8	55	\$17,360.22	\$310.39	\$813.31	\$128.20	\$86.80	\$1,338.70
2849519	Winchester Crossing Phase 8	EE	9	55	\$17,360.22	\$310.39	\$813.31	\$128.20	\$86.80	\$1,338.70
2849520	Winchester Crossing Phase 8	EE	10	55	\$17,360.22	\$310.39	\$813.31	\$128.20	\$86.80	\$1,338.70
2849521	Winchester Crossing Phase 8	EE	11	55	\$17,360.22	\$310.39	\$813.31	\$128.20	\$86.80	\$1,338.70
2849522	Winchester Crossing Phase 8	EE	12	55	\$17,360.22	\$310.39	\$813.31	\$128.20	\$86.80	\$1,338.70
2849523	Winchester Crossing Phase 8	EE	13	55	\$17,360.22	\$310.39	\$813.31	\$128.20	\$86.80	\$1,338.70
2849524	Winchester Crossing Phase 8	EE	14	55	\$17,360.22	\$310.39	\$813.31	\$128.20	\$86.80	\$1,338.70
2849525	Winchester Crossing Phase 8	EE	15	55	\$17,360.22	\$310.39	\$813.31	\$128.20	\$86.80	\$1,338.70
2849526	Winchester Crossing Phase 8	EE	16	55	\$17,360.22	\$310.39	\$813.31	\$128.20	\$86.80	\$1,338.70
2849527	Winchester Crossing Phase 8	EE	17	55	\$17,360.22	\$310.39	\$813.31	\$128.20	\$86.80	\$1,338.70
2849528	Winchester Crossing Phase 8	EE	18	55	\$17,360.22	\$310.39	\$813.31	\$128.20	\$86.80	\$1,338.70
2849529	Winchester Crossing Phase 8	EE	19	55	\$17,360.22	\$310.39	\$813.31	\$128.20	\$86.80	\$1,338.70
2849530	Winchester Crossing Phase 8	FF	1	55	\$17,360.22	\$310.39	\$813.31	\$128.20	\$86.80	\$1,338.70
2849531	Winchester Crossing Phase 8	FF	2	55	\$17,360.22	\$310.39	\$813.31	\$128.20	\$86.80	\$1,338.70
2849532	Winchester Crossing Phase 8	FF	3	55	\$17,360.22	\$310.39	\$813.31	\$128.20	\$86.80	\$1,338.70
2849533	Winchester Crossing Phase 8	FF	4	55	\$17,360.22	\$310.39	\$813.31	\$128.20	\$86.80	\$1,338.70
2849534	Winchester Crossing Phase 8	FF	5	55	\$8,680.11	\$155.19	\$406.65	\$64.10	\$43.40	\$669.35
2916751	Winchester Crossing Phase 8	FF			\$8,680.11	\$155.19	\$406.65	\$64.10	\$43.40	\$669.35
2849535	Winchester Crossing Phase 8	FF	6	55	\$17,360.22	\$310.39	\$813.31	\$128.20	\$86.80	\$1,338.70
2849536	Winchester Crossing Phase 8	FF	7	55	\$17,360.22	\$310.39	\$813.31	\$128.20	\$86.80	\$1,338.70
2849537	Winchester Crossing Phase 8	FF	8	55	\$17,360.22	\$310.39	\$813.31	\$128.20	\$86.80	\$1,338.70
2849538	Winchester Crossing Phase 8	FF	9	55	\$17,360.22	\$310.39	\$813.31	\$128.20	\$86.80	\$1,338.70
2849539	Winchester Crossing Phase 8	FF	10	55	\$17,360.22	\$310.39	\$813.31	\$128.20	\$86.80	\$1,338.70
2849540	Winchester Crossing Phase 8	FF	11	55	\$17,360.22	\$310.39	\$813.31	\$128.20	\$86.80	\$1,338.70
2849541	Winchester Crossing Phase 8	FF	12	55	\$17,360.22	\$310.39	\$813.31	\$128.20	\$86.80	\$1,338.70
2849542	Winchester Crossing Phase 8	FF	13	55	\$17,360.22	\$310.39	\$813.31	\$128.20	\$86.80	\$1,338.70
2849543	Winchester Crossing Phase 8	FF	14	55	\$17,360.22	\$310.39	\$813.31	\$128.20	\$86.80	\$1,338.70
2849544	Winchester Crossing Phase 8	FF	15	55	\$17,360.22	\$310.39	\$813.31	\$128.20	\$86.80	\$1,338.70
2849545	Winchester Crossing Phase 8	FF	16	55	\$17,360.22	\$310.39	\$813.31	\$128.20	\$86.80	\$1,338.70
2849546	Winchester Crossing Phase 8	FF	17	55	\$17,360.22	\$310.39	\$813.31	\$128.20	\$86.80	\$1,338.70
2849547	Winchester Crossing Phase 8	FF	18	55	\$17,360.22	\$310.39	\$813.31	\$128.20	\$86.80	\$1,338.70
2849548	Winchester Crossing Phase 8	FF	19	55	\$17,360.22	\$310.39	\$813.31	\$128.20	\$86.80	\$1,338.70
2849549	Winchester Crossing Phase 8	FF	20	55	\$17,360.22	\$310.39	\$813.31	\$128.20	\$86.80	\$1,338.70
2849550	Winchester Crossing Phase 8	FF	21	55	\$17,360.22	\$310.39	\$813.31	\$128.20	\$86.80	\$1,338.70
2849551	Winchester Crossing Phase 8	FF	22	55	\$17,360.22	\$310.39	\$813.31	\$128.20	\$86.80	\$1,338.70

Parcel	Plat	Block	Lot	Lot Type	Assessment Per Unit	Principal	Interest	Administrative Expenses	Additional Interest	Total Annual Installment
2849552	Winchester Crossing Phase 8	FF	23	55	\$17,360.22	\$310.39	\$813.31	\$128.20	\$86.80	\$1,338.70
2849553	Winchester Crossing Phase 8	FF	24	55	\$17,360.22	\$310.39	\$813.31	\$128.20	\$86.80	\$1,338.70
2849554	Winchester Crossing Phase 8	FF	25	55	\$17,360.22	\$310.39	\$813.31	\$128.20	\$86.80	\$1,338.70
2849555	Winchester Crossing Phase 8	FF	26	55	\$17,360.22	\$310.39	\$813.31	\$128.20	\$86.80	\$1,338.70
2849556	Winchester Crossing Phase 8	FF	27	55	\$17,360.22	\$310.39	\$813.31	\$128.20	\$86.80	\$1,338.70
2849557	Winchester Crossing Phase 8	FF	28	55	\$17,360.22	\$310.39	\$813.31	\$128.20	\$86.80	\$1,338.70
2849558	Winchester Crossing Phase 8	FF	29	55	\$17,360.22	\$310.39	\$813.31	\$128.20	\$86.80	\$1,338.70
2849559	Winchester Crossing Phase 8	FF	30	55	\$17,360.22	\$310.39	\$813.31	\$128.20	\$86.80	\$1,338.70
2849560	Winchester Crossing Phase 8	FF	31	55	\$17,360.22	\$310.39	\$813.31	\$128.20	\$86.80	\$1,338.70
2849561	Winchester Crossing Phase 8	FF	32	55	\$17,360.22	\$310.39	\$813.31	\$128.20	\$86.80	\$1,338.70
2849562	Winchester Crossing Phase 8	FF	33	55	\$17,360.22	\$310.39	\$813.31	\$128.20	\$86.80	\$1,338.70
2849563	Winchester Crossing Phase 8	GG	1X	Non-Benefited	\$0.00	\$0.00	\$0.00	\$0.00	\$0.00	\$0.00
2849564	Winchester Crossing Phase 8	HH	1	55	\$17,360.22	\$310.39	\$813.31	\$128.20	\$86.80	\$1,338.70
2849565	Winchester Crossing Phase 8	HH	2	55	\$17,360.22	\$310.39	\$813.31	\$128.20	\$86.80	\$1,338.70
2849566	Winchester Crossing Phase 8	HH	3	55	\$17,360.22	\$310.39	\$813.31	\$128.20	\$86.80	\$1,338.70
2849567	Winchester Crossing Phase 8	HH	4	55	\$17,360.22	\$310.39	\$813.31	\$128.20	\$86.80	\$1,338.70
2849568	Winchester Crossing Phase 8	HH	5	55	\$17,360.22	\$310.39	\$813.31	\$128.20	\$86.80	\$1,338.70
2849569	Winchester Crossing Phase 8	HH	6	55	\$17,360.22	\$310.39	\$813.31	\$128.20	\$86.80	\$1,338.70
2849570	Winchester Crossing Phase 8	HH	7	55	\$17,360.22	\$310.39	\$813.31	\$128.20	\$86.80	\$1,338.70
2849571	Winchester Crossing Phase 8	HH	8	55	\$17,360.22	\$310.39	\$813.31	\$128.20	\$86.80	\$1,338.70
2849572	Winchester Crossing Phase 8	HH	9	55	\$17,360.22	\$310.39	\$813.31	\$128.20	\$86.80	\$1,338.70
2849573	Winchester Crossing Phase 8	HH	10	55	\$17,360.22	\$310.39	\$813.31	\$128.20	\$86.80	\$1,338.70
2849574	Winchester Crossing Phase 8	HH	11	55	\$17,360.22	\$310.39	\$813.31	\$128.20	\$86.80	\$1,338.70
2849575	Winchester Crossing Phase 8	HH	12	55	\$17,360.22	\$310.39	\$813.31	\$128.20	\$86.80	\$1,338.70
2849576	Winchester Crossing Phase 8	HH	13	55	\$17,360.22	\$310.39	\$813.31	\$128.20	\$86.80	\$1,338.70
2849577	Winchester Crossing Phase 8	HH	14	55	\$17,360.22	\$310.39	\$813.31	\$128.20	\$86.80	\$1,338.70
2849578	Winchester Crossing Phase 8	HH	15	55	\$17,360.22	\$310.39	\$813.31	\$128.20	\$86.80	\$1,338.70
2849579	Winchester Crossing Phase 8	HH	16	55	\$17,360.22	\$310.39	\$813.31	\$128.20	\$86.80	\$1,338.70
2849580	Winchester Crossing Phase 8	HH	17	55	\$17,360.22	\$310.39	\$813.31	\$128.20	\$86.80	\$1,338.70
2849581	Winchester Crossing Phase 8	HH	18	55	\$17,360.22	\$310.39	\$813.31	\$128.20	\$86.80	\$1,338.70
2849582	Winchester Crossing Phase 8	HH	19	55	\$17,360.22	\$310.39	\$813.31	\$128.20	\$86.80	\$1,338.70
2849583	Winchester Crossing Phase 8	HH	20	55	\$17,360.22	\$310.39	\$813.31	\$128.20	\$86.80	\$1,338.70
2849584	Winchester Crossing Phase 8	HH	21	55	\$17,360.22	\$310.39	\$813.31	\$128.20	\$86.80	\$1,338.70
2849585	Winchester Crossing Phase 8	HH	22	55	\$17,360.22	\$310.39	\$813.31	\$128.20	\$86.80	\$1,338.70
2849586	Winchester Crossing Phase 8	HH	23	55	\$17,360.22	\$310.39	\$813.31	\$128.20	\$86.80	\$1,338.70
2849587	Winchester Crossing Phase 8	HH	24	55	\$17,360.22	\$310.39	\$813.31	\$128.20	\$86.80	\$1,338.70
2849588	Winchester Crossing Phase 8	HH	25	55	\$17,360.22	\$310.39	\$813.31	\$128.20	\$86.80	\$1,338.70

Parcel	Plat	Block	Lot	Lot Type	Assessment Per Unit	Principal	Interest	Administrative Expenses	Additional Interest	Total Annual Installment
2849589	Winchester Crossing Phase 8	HH	26	55	\$17,360.22	\$310.39	\$813.31	\$128.20	\$86.80	\$1,338.70
2849590	Winchester Crossing Phase 8	HH	27	55	\$17,360.22	\$310.39	\$813.31	\$128.20	\$86.80	\$1,338.70
2849591	Winchester Crossing Phase 8	HH	28	55	\$8,680.11	\$155.19	\$406.65	\$64.10	\$43.40	\$669.35
2886298	Winchester Crossing Phase 8	HH			\$8,680.11	\$155.19	\$406.65	\$64.10	\$43.40	\$669.35
2849592	Winchester Crossing Phase 8	HH	29	55	\$17,360.22	\$310.39	\$813.31	\$128.20	\$86.80	\$1,338.70
2849593	Winchester Crossing Phase 8	HH	30	55	\$17,360.22	\$310.39	\$813.31	\$128.20	\$86.80	\$1,338.70
2849594	Winchester Crossing Phase 8	HH	31	55	\$17,360.22	\$310.39	\$813.31	\$128.20	\$86.80	\$1,338.70
2849595	Winchester Crossing Phase 8	HH	32	55	\$17,360.22	\$310.39	\$813.31	\$128.20	\$86.80	\$1,338.70
2849596	Winchester Crossing Phase 8	HH	33X	Non-Benefited	\$0.00	\$0.00	\$0.00	\$0.00	\$0.00	\$0.00
2849597	Winchester Crossing Phase 8	HH	34X	Non-Benefited	\$0.00	\$0.00	\$0.00	\$0.00	\$0.00	\$0.00
2858255	Winchester Crossing Phase 6	G	21	55	\$17,360.22	\$310.39	\$813.31	\$128.20	\$86.80	\$1,338.70
2858276	Winchester Crossing Phase 6	G	22	55	\$17,360.22	\$310.39	\$813.31	\$128.20	\$86.80	\$1,338.70
2858277	Winchester Crossing Phase 6	G	23	55	\$17,360.22	\$310.39	\$813.31	\$128.20	\$86.80	\$1,338.70
2858278	Winchester Crossing Phase 6	G	24	55	\$17,360.22	\$310.39	\$813.31	\$128.20	\$86.80	\$1,338.70
2858279	Winchester Crossing Phase 6	G	25	55	\$17,360.22	\$310.39	\$813.31	\$128.20	\$86.80	\$1,338.70
2858280	Winchester Crossing Phase 6	G	26	55	\$17,360.22	\$310.39	\$813.31	\$128.20	\$86.80	\$1,338.70
2858281	Winchester Crossing Phase 6	G	27	55	\$17,360.22	\$310.39	\$813.31	\$128.20	\$86.80	\$1,338.70
2858282	Winchester Crossing Phase 6	G	28	55	\$17,360.22	\$310.39	\$813.31	\$128.20	\$86.80	\$1,338.70
2858283	Winchester Crossing Phase 6	G	29	55	\$17,360.22	\$310.39	\$813.31	\$128.20	\$86.80	\$1,338.70
2858284	Winchester Crossing Phase 6	G	30	55	\$17,360.22	\$310.39	\$813.31	\$128.20	\$86.80	\$1,338.70
2858285	Winchester Crossing Phase 6	G	31	55	\$17,360.22	\$310.39	\$813.31	\$128.20	\$86.80	\$1,338.70
2858286	Winchester Crossing Phase 6	G	32	55	\$17,360.22	\$310.39	\$813.31	\$128.20	\$86.80	\$1,338.70
2858287	Winchester Crossing Phase 6	G	33	55	\$17,360.22	\$310.39	\$813.31	\$128.20	\$86.80	\$1,338.70
2858288	Winchester Crossing Phase 6	G	34	55	\$17,360.22	\$310.39	\$813.31	\$128.20	\$86.80	\$1,338.70
2858289	Winchester Crossing Phase 6	G	35	55	\$17,360.22	\$310.39	\$813.31	\$128.20	\$86.80	\$1,338.70
2858290	Winchester Crossing Phase 6	G			\$5,902.47	\$105.53	\$276.52	\$43.59	\$29.51	\$455.16
2884554	Winchester Crossing Phase 6	G	36	55	\$5,728.87	\$102.43	\$268.39	\$42.31	\$28.64	\$441.77
2884555	Winchester Crossing Phase 6	G			\$5,728.87	\$102.43	\$268.39	\$42.31	\$28.64	\$441.77
2858291	Winchester Crossing Phase 6	G	37	55	\$17,360.22	\$310.39	\$813.31	\$128.20	\$86.80	\$1,338.70
2858292	Winchester Crossing Phase 6	G	38	55	\$17,360.22	\$310.39	\$813.31	\$128.20	\$86.80	\$1,338.70
2858293	Winchester Crossing Phase 6	G	39	55	\$17,360.22	\$310.39	\$813.31	\$128.20	\$86.80	\$1,338.70
2858294	Winchester Crossing Phase 6	G	40	55	\$17,360.22	\$310.39	\$813.31	\$128.20	\$86.80	\$1,338.70
2858295	Winchester Crossing Phase 6	H	15	55	\$17,360.22	\$310.39	\$813.31	\$128.20	\$86.80	\$1,338.70
2858298	Winchester Crossing Phase 6	H	16	55	\$17,360.22	\$310.39	\$813.31	\$128.20	\$86.80	\$1,338.70
2858299	Winchester Crossing Phase 6	H	17	55	\$17,360.22	\$310.39	\$813.31	\$128.20	\$86.80	\$1,338.70
2858300	Winchester Crossing Phase 6	H	18	55	\$17,360.22	\$310.39	\$813.31	\$128.20	\$86.80	\$1,338.70
2858301	Winchester Crossing Phase 6	H	19	55	\$17,360.22	\$310.39	\$813.31	\$128.20	\$86.80	\$1,338.70

Parcel	Plat	Block	Lot	Lot Type	Assessment Per Unit	Principal	Interest	Administrative Expenses	Additional Interest	Total Annual Installment
2858302	Winchester Crossing Phase 6	H	20	55	\$17,360.22	\$310.39	\$813.31	\$128.20	\$86.80	\$1,338.70
2858303	Winchester Crossing Phase 6	H	21	55	\$17,360.22	\$310.39	\$813.31	\$128.20	\$86.80	\$1,338.70
2858304	Winchester Crossing Phase 6	H	22	55	\$17,360.22	\$310.39	\$813.31	\$128.20	\$86.80	\$1,338.70
2858305	Winchester Crossing Phase 6	H	23	55	\$17,360.22	\$310.39	\$813.31	\$128.20	\$86.80	\$1,338.70
2858306	Winchester Crossing Phase 6	H	24	55	\$8,680.11	\$155.19	\$406.65	\$64.10	\$43.40	\$669.35
2898144	Winchester Crossing Phase 6	H	24	55	\$8,680.11	\$155.19	\$406.65	\$64.10	\$43.40	\$669.35
2858307	Winchester Crossing Phase 6	H	25	55	\$17,360.22	\$310.39	\$813.31	\$128.20	\$86.80	\$1,338.70
2858308	Winchester Crossing Phase 6	H	26	55	\$17,360.22	\$310.39	\$813.31	\$128.20	\$86.80	\$1,338.70
2858309	Winchester Crossing Phase 6	H	27	55	\$17,360.22	\$310.39	\$813.31	\$128.20	\$86.80	\$1,338.70
2858310	Winchester Crossing Phase 6	H	28	55	\$17,360.22	\$310.39	\$813.31	\$128.20	\$86.80	\$1,338.70
2858311	Winchester Crossing Phase 6	J	45X	Non-Benefited	\$0.00	\$0.00	\$0.00	\$0.00	\$0.00	\$0.00
2858312	Winchester Crossing Phase 6	L	1	55	\$17,360.22	\$310.39	\$813.31	\$128.20	\$86.80	\$1,338.70
2858313	Winchester Crossing Phase 6	L	2	55	\$17,360.22	\$310.39	\$813.31	\$128.20	\$86.80	\$1,338.70
2858314	Winchester Crossing Phase 6	L	3	55	\$17,360.22	\$310.39	\$813.31	\$128.20	\$86.80	\$1,338.70
2858315	Winchester Crossing Phase 6	L	4	55	\$17,360.22	\$310.39	\$813.31	\$128.20	\$86.80	\$1,338.70
2858316	Winchester Crossing Phase 6	L	5	55	\$17,360.22	\$310.39	\$813.31	\$128.20	\$86.80	\$1,338.70
2858317	Winchester Crossing Phase 6	L	6	55	\$17,360.22	\$310.39	\$813.31	\$128.20	\$86.80	\$1,338.70
2858318	Winchester Crossing Phase 6	L	7	55	\$17,360.22	\$310.39	\$813.31	\$128.20	\$86.80	\$1,338.70
2858319	Winchester Crossing Phase 6	L	8	55	\$17,360.22	\$310.39	\$813.31	\$128.20	\$86.80	\$1,338.70
2858320	Winchester Crossing Phase 6	L	9	55	\$17,360.22	\$310.39	\$813.31	\$128.20	\$86.80	\$1,338.70
2858321	Winchester Crossing Phase 6	L	10	55	\$17,360.22	\$310.39	\$813.31	\$128.20	\$86.80	\$1,338.70
2858322	Winchester Crossing Phase 6	L	11	55	\$17,360.22	\$310.39	\$813.31	\$128.20	\$86.80	\$1,338.70
2858323	Winchester Crossing Phase 6	L	12	55	\$17,360.22	\$310.39	\$813.31	\$128.20	\$86.80	\$1,338.70
2858324	Winchester Crossing Phase 6	L	13	55	\$17,360.22	\$310.39	\$813.31	\$128.20	\$86.80	\$1,338.70
2858325	Winchester Crossing Phase 6	L	14	55	\$17,360.22	\$310.39	\$813.31	\$128.20	\$86.80	\$1,338.70
2858326	Winchester Crossing Phase 6	L	15	55	\$17,360.22	\$310.39	\$813.31	\$128.20	\$86.80	\$1,338.70
2858327	Winchester Crossing Phase 6	L	16	55	\$17,360.22	\$310.39	\$813.31	\$128.20	\$86.80	\$1,338.70
2858328	Winchester Crossing Phase 6	L	17	55	\$17,360.22	\$310.39	\$813.31	\$128.20	\$86.80	\$1,338.70
2858329	Winchester Crossing Phase 6	L	18	55	\$17,360.22	\$310.39	\$813.31	\$128.20	\$86.80	\$1,338.70
2858330	Winchester Crossing Phase 6	L	19	55	\$17,360.22	\$310.39	\$813.31	\$128.20	\$86.80	\$1,338.70
2858331	Winchester Crossing Phase 6	L	20	55	\$17,360.22	\$310.39	\$813.31	\$128.20	\$86.80	\$1,338.70
2858332	Winchester Crossing Phase 6	L	21	55	\$17,360.22	\$310.39	\$813.31	\$128.20	\$86.80	\$1,338.70
2858333	Winchester Crossing Phase 6	L	22	55	\$17,360.22	\$310.39	\$813.31	\$128.20	\$86.80	\$1,338.70
2858334	Winchester Crossing Phase 6	L	23	55	\$17,360.22	\$310.39	\$813.31	\$128.20	\$86.80	\$1,338.70
2858335	Winchester Crossing Phase 6	L	24	55	\$17,360.22	\$310.39	\$813.31	\$128.20	\$86.80	\$1,338.70
2858336	Winchester Crossing Phase 6	L	25	55	\$17,360.22	\$310.39	\$813.31	\$128.20	\$86.80	\$1,338.70
2858337	Winchester Crossing Phase 6	L	26	55	\$17,360.22	\$310.39	\$813.31	\$128.20	\$86.80	\$1,338.70

Parcel	Plat	Block	Lot	Lot Type	Assessment Per Unit	Principal	Interest	Administrative Expenses	Additional Interest	Total Annual Installment
2858338	Winchester Crossing Phase 6	L	27	55	\$17,360.22	\$310.39	\$813.31	\$128.20	\$86.80	\$1,338.70
2858339	Winchester Crossing Phase 6	L	28	55	\$17,360.22	\$310.39	\$813.31	\$128.20	\$86.80	\$1,338.70
2858340	Winchester Crossing Phase 6	M	1	55	\$17,360.22	\$310.39	\$813.31	\$128.20	\$86.80	\$1,338.70
2858341	Winchester Crossing Phase 6	M	2	55	\$17,360.22	\$310.39	\$813.31	\$128.20	\$86.80	\$1,338.70
2858342	Winchester Crossing Phase 6	M	3	55	\$17,360.22	\$310.39	\$813.31	\$128.20	\$86.80	\$1,338.70
2858343	Winchester Crossing Phase 6	M	4	55	\$17,360.22	\$310.39	\$813.31	\$128.20	\$86.80	\$1,338.70
2858344	Winchester Crossing Phase 6	M	5	55	\$8,680.11	\$155.19	\$406.65	\$64.10	\$43.40	\$669.35
2933028	Winchester Crossing Phase 6	M	5	55	\$8,680.11	\$155.19	\$406.65	\$64.10	\$43.40	\$669.35
2858345	Winchester Crossing Phase 6	M	6	55	\$17,360.22	\$310.39	\$813.31	\$128.20	\$86.80	\$1,338.70
2858346	Winchester Crossing Phase 6	M	7	55	\$17,360.22	\$310.39	\$813.31	\$128.20	\$86.80	\$1,338.70
2858347	Winchester Crossing Phase 6	M	8	55	\$17,360.22	\$310.39	\$813.31	\$128.20	\$86.80	\$1,338.70
2858348	Winchester Crossing Phase 6	M	9	55	\$17,360.22	\$310.39	\$813.31	\$128.20	\$86.80	\$1,338.70
2858349	Winchester Crossing Phase 6	M	10	55	\$17,360.22	\$310.39	\$813.31	\$128.20	\$86.80	\$1,338.70
2858350	Winchester Crossing Phase 6	M	11	55	\$17,360.22	\$310.39	\$813.31	\$128.20	\$86.80	\$1,338.70
2858351	Winchester Crossing Phase 6	M	12	55	\$17,360.22	\$310.39	\$813.31	\$128.20	\$86.80	\$1,338.70
2858352	Winchester Crossing Phase 6	M	13	55	\$17,360.22	\$310.39	\$813.31	\$128.20	\$86.80	\$1,338.70
2858353	Winchester Crossing Phase 6	M	14	55	\$17,360.22	\$310.39	\$813.31	\$128.20	\$86.80	\$1,338.70
2858354	Winchester Crossing Phase 6	M	15	55	\$17,360.22	\$310.39	\$813.31	\$128.20	\$86.80	\$1,338.70
2858355	Winchester Crossing Phase 6	M	16	55	\$17,360.22	\$310.39	\$813.31	\$128.20	\$86.80	\$1,338.70
2858356	Winchester Crossing Phase 6	M	17	55	\$17,360.22	\$310.39	\$813.31	\$128.20	\$86.80	\$1,338.70
2858357	Winchester Crossing Phase 6	M	18	55	\$17,360.22	\$310.39	\$813.31	\$128.20	\$86.80	\$1,338.70
2858358	Winchester Crossing Phase 6	M	19	55	\$17,360.22	\$310.39	\$813.31	\$128.20	\$86.80	\$1,338.70
2858359	Winchester Crossing Phase 6	M	20	55	\$17,360.22	\$310.39	\$813.31	\$128.20	\$86.80	\$1,338.70
2858360	Winchester Crossing Phase 6	M	21	55	\$17,360.22	\$310.39	\$813.31	\$128.20	\$86.80	\$1,338.70
2858361	Winchester Crossing Phase 6	M	22	55	\$17,360.22	\$310.39	\$813.31	\$128.20	\$86.80	\$1,338.70
2858362	Winchester Crossing Phase 6	M	23	55	\$17,360.22	\$310.39	\$813.31	\$128.20	\$86.80	\$1,338.70
2858363	Winchester Crossing Phase 6	M	24	55	\$17,360.22	\$310.39	\$813.31	\$128.20	\$86.80	\$1,338.70
2858364	Winchester Crossing Phase 6	M	25	55	\$17,360.22	\$310.39	\$813.31	\$128.20	\$86.80	\$1,338.70
2858365	Winchester Crossing Phase 6	M	26	55	\$17,360.22	\$310.39	\$813.31	\$128.20	\$86.80	\$1,338.70
2858366	Winchester Crossing Phase 6	M	27	55	\$17,360.22	\$310.39	\$813.31	\$128.20	\$86.80	\$1,338.70
2858367	Winchester Crossing Phase 6	M	28	55	\$17,360.22	\$310.39	\$813.31	\$128.20	\$86.80	\$1,338.70
2858368	Winchester Crossing Phase 6	N	1	55	\$17,360.22	\$310.39	\$813.31	\$128.20	\$86.80	\$1,338.70
2858369	Winchester Crossing Phase 6	N	2	55	\$17,360.22	\$310.39	\$813.31	\$128.20	\$86.80	\$1,338.70
2858370	Winchester Crossing Phase 6	N	3	55	\$17,360.22	\$310.39	\$813.31	\$128.20	\$86.80	\$1,338.70
2858371	Winchester Crossing Phase 6	N	4	55	\$17,360.22	\$310.39	\$813.31	\$128.20	\$86.80	\$1,338.70
2858372	Winchester Crossing Phase 6	N	5	55	\$17,360.22	\$310.39	\$813.31	\$128.20	\$86.80	\$1,338.70
2858373	Winchester Crossing Phase 6	N	6	55	\$17,360.22	\$310.39	\$813.31	\$128.20	\$86.80	\$1,338.70

Parcel	Plat	Block	Lot	Lot Type	Assessment Per Unit	Principal	Interest	Administrative Expenses	Additional Interest	Total Annual Installment
2858374	Winchester Crossing Phase 6	N	7	55	\$17,360.22	\$310.39	\$813.31	\$128.20	\$86.80	\$1,338.70
2858375	Winchester Crossing Phase 6	N	8	55	\$17,360.22	\$310.39	\$813.31	\$128.20	\$86.80	\$1,338.70
2858376	Winchester Crossing Phase 6	N	9	55	\$17,360.22	\$310.39	\$813.31	\$128.20	\$86.80	\$1,338.70
2858377	Winchester Crossing Phase 6	N	10	55	\$17,360.22	\$310.39	\$813.31	\$128.20	\$86.80	\$1,338.70
2858378	Winchester Crossing Phase 6	N	11	55	\$8,680.11	\$155.19	\$406.65	\$64.10	\$43.40	\$669.35
2927841	Winchester Crossing Phase 6				\$8,680.11	\$155.19	\$406.65	\$64.10	\$43.40	\$669.35
2858379	Winchester Crossing Phase 6	N	12	55	\$8,680.11	\$155.19	\$406.65	\$64.10	\$43.40	\$669.35
2891783	Winchester Crossing Phase 6				\$8,680.11	\$155.19	\$406.65	\$64.10	\$43.40	\$669.35
2858380	Winchester Crossing Phase 6	N	13	55	\$17,360.22	\$310.39	\$813.31	\$128.20	\$86.80	\$1,338.70
2858381	Winchester Crossing Phase 6	N	14	55	\$17,360.22	\$310.39	\$813.31	\$128.20	\$86.80	\$1,338.70
2858382	Winchester Crossing Phase 6	N	15	55	\$17,360.22	\$310.39	\$813.31	\$128.20	\$86.80	\$1,338.70
2858383	Winchester Crossing Phase 6	N	16	55	\$17,360.22	\$310.39	\$813.31	\$128.20	\$86.80	\$1,338.70
2858384	Winchester Crossing Phase 6	N	17	55	\$17,360.22	\$310.39	\$813.31	\$128.20	\$86.80	\$1,338.70
2858385	Winchester Crossing Phase 6	N	18	55	\$17,360.22	\$310.39	\$813.31	\$128.20	\$86.80	\$1,338.70
2858386	Winchester Crossing Phase 6	N	19	55	\$17,360.22	\$310.39	\$813.31	\$128.20	\$86.80	\$1,338.70
2858387	Winchester Crossing Phase 6	N	20	55	\$17,360.22	\$310.39	\$813.31	\$128.20	\$86.80	\$1,338.70
2858388	Winchester Crossing Phase 6	N	21	55	\$17,360.22	\$310.39	\$813.31	\$128.20	\$86.80	\$1,338.70
2858389	Winchester Crossing Phase 6	N	22	55	\$17,360.22	\$310.39	\$813.31	\$128.20	\$86.80	\$1,338.70
2858390	Winchester Crossing Phase 6	N	23	55	\$17,360.22	\$310.39	\$813.31	\$128.20	\$86.80	\$1,338.70
2858391	Winchester Crossing Phase 6	N	24	55	\$17,360.22	\$310.39	\$813.31	\$128.20	\$86.80	\$1,338.70
2858392	Winchester Crossing Phase 6	N	25	55	\$17,360.22	\$310.39	\$813.31	\$128.20	\$86.80	\$1,338.70
2858393	Winchester Crossing Phase 6	N	26	55	\$17,360.22	\$310.39	\$813.31	\$128.20	\$86.80	\$1,338.70
2858394	Winchester Crossing Phase 6	N	27	55	\$17,360.22	\$310.39	\$813.31	\$128.20	\$86.80	\$1,338.70
2858395	Winchester Crossing Phase 6	N	28	55	\$17,360.22	\$310.39	\$813.31	\$128.20	\$86.80	\$1,338.70
2858396	Winchester Crossing Phase 6	N	29	55	\$17,360.22	\$310.39	\$813.31	\$128.20	\$86.80	\$1,338.70
2858397	Winchester Crossing Phase 6	N	30	55	\$17,360.22	\$310.39	\$813.31	\$128.20	\$86.80	\$1,338.70
2858398	Winchester Crossing Phase 6	N	31X	Non-Benefited	\$0.00	\$0.00	\$0.00	\$0.00	\$0.00	\$0.00
2858399	Winchester Crossing Phase 6	N	32X	Non-Benefited	\$0.00	\$0.00	\$0.00	\$0.00	\$0.00	\$0.00
2858400	Winchester Crossing Phase 6	O	1	55	\$17,360.22	\$310.39	\$813.31	\$128.20	\$86.80	\$1,338.70
2858403	Winchester Crossing Phase 6	O	2	55	\$17,360.22	\$310.39	\$813.31	\$128.20	\$86.80	\$1,338.70
2858404	Winchester Crossing Phase 6	O	3	55	\$17,360.22	\$310.39	\$813.31	\$128.20	\$86.80	\$1,338.70
2858405	Winchester Crossing Phase 6				\$8,680.11	\$155.19	\$406.65	\$64.10	\$43.40	\$669.35
2889021	Winchester Crossing Phase 6	O	4	55	\$8,680.11	\$155.19	\$406.65	\$64.10	\$43.40	\$669.35
2858406	Winchester Crossing Phase 6	O	5	55	\$17,360.22	\$310.39	\$813.31	\$128.20	\$86.80	\$1,338.70
2858407	Winchester Crossing Phase 6	O	6	55	\$17,360.22	\$310.39	\$813.31	\$128.20	\$86.80	\$1,338.70
2858408	Winchester Crossing Phase 6	O	7	55	\$17,360.22	\$310.39	\$813.31	\$128.20	\$86.80	\$1,338.70
2858409	Winchester Crossing Phase 6	O	8	55	\$17,360.22	\$310.39	\$813.31	\$128.20	\$86.80	\$1,338.70

Parcel	Plat	Block	Lot	Lot Type	Assessment Per Unit	Principal	Interest	Administrative Expenses	Additional Interest	Total Annual Installment
2858410	Winchester Crossing Phase 6	O	9	55	\$17,360.22	\$310.39	\$813.31	\$128.20	\$86.80	\$1,338.70
2858411	Winchester Crossing Phase 6	O	10	55	\$17,360.22	\$310.39	\$813.31	\$128.20	\$86.80	\$1,338.70
2858412	Winchester Crossing Phase 6	O	11	55	\$17,360.22	\$310.39	\$813.31	\$128.20	\$86.80	\$1,338.70
2858413	Winchester Crossing Phase 6	O	12	55	\$17,360.22	\$310.39	\$813.31	\$128.20	\$86.80	\$1,338.70
2858414	Winchester Crossing Phase 6	O	13	55	\$17,360.22	\$310.39	\$813.31	\$128.20	\$86.80	\$1,338.70
2858415	Winchester Crossing Phase 6	O	14	55	\$17,360.22	\$310.39	\$813.31	\$128.20	\$86.80	\$1,338.70
2858416	Winchester Crossing Phase 6	O	15	55	\$17,360.22	\$310.39	\$813.31	\$128.20	\$86.80	\$1,338.70
2858417	Winchester Crossing Phase 6	O	16	55	\$17,360.22	\$310.39	\$813.31	\$128.20	\$86.80	\$1,338.70
2858418	Winchester Crossing Phase 6	O	17	55	\$17,360.22	\$310.39	\$813.31	\$128.20	\$86.80	\$1,338.70
2858419	Winchester Crossing Phase 6	O	18	55	\$17,360.22	\$310.39	\$813.31	\$128.20	\$86.80	\$1,338.70
2858420	Winchester Crossing Phase 6	O	19	55	\$17,360.22	\$310.39	\$813.31	\$128.20	\$86.80	\$1,338.70
2858421	Winchester Crossing Phase 6	O	20X	Non-Benefited	\$0.00	\$0.00	\$0.00	\$0.00	\$0.00	\$0.00
2858422	Winchester Crossing Phase 6	O	21X	Non-Benefited	\$0.00	\$0.00	\$0.00	\$0.00	\$0.00	\$0.00
2858423	Winchester Crossing Phase 6	P	1	55	\$17,360.22	\$310.39	\$813.31	\$128.20	\$86.80	\$1,338.70
2858424	Winchester Crossing Phase 6	P	2	55	\$17,360.22	\$310.39	\$813.31	\$128.20	\$86.80	\$1,338.70
2858425	Winchester Crossing Phase 6	P	3	55	\$17,360.22	\$310.39	\$813.31	\$128.20	\$86.80	\$1,338.70
2858426	Winchester Crossing Phase 6	P	4	55	\$17,360.22	\$310.39	\$813.31	\$128.20	\$86.80	\$1,338.70
2858427	Winchester Crossing Phase 6	P	5	55	\$17,360.22	\$310.39	\$813.31	\$128.20	\$86.80	\$1,338.70
2858428	Winchester Crossing Phase 6	P	6	55	\$17,360.22	\$310.39	\$813.31	\$128.20	\$86.80	\$1,338.70
2858429	Winchester Crossing Phase 6	P	7	55	\$17,360.22	\$310.39	\$813.31	\$128.20	\$86.80	\$1,338.70
2858430	Winchester Crossing Phase 6	P	8	55	\$17,360.22	\$310.39	\$813.31	\$128.20	\$86.80	\$1,338.70
2858431	Winchester Crossing Phase 6	P	9	55	\$17,360.22	\$310.39	\$813.31	\$128.20	\$86.80	\$1,338.70
2858432	Winchester Crossing Phase 6	P	10	55	\$17,360.22	\$310.39	\$813.31	\$128.20	\$86.80	\$1,338.70
2858433	Winchester Crossing Phase 6	P	11	55	\$17,360.22	\$310.39	\$813.31	\$128.20	\$86.80	\$1,338.70
2858434	Winchester Crossing Phase 6	P	12	55	\$17,360.22	\$310.39	\$813.31	\$128.20	\$86.80	\$1,338.70
2858435	Winchester Crossing Phase 6	P	13	55	\$17,360.22	\$310.39	\$813.31	\$128.20	\$86.80	\$1,338.70
2858436	Winchester Crossing Phase 6	P	14	55	\$17,360.22	\$310.39	\$813.31	\$128.20	\$86.80	\$1,338.70
2858437	Winchester Crossing Phase 6	P	15	55	\$17,360.22	\$310.39	\$813.31	\$128.20	\$86.80	\$1,338.70
2858438	Winchester Crossing Phase 6	P	16	55	\$17,360.22	\$310.39	\$813.31	\$128.20	\$86.80	\$1,338.70
2858439	Winchester Crossing Phase 6	Q	1	55	\$17,360.22	\$310.39	\$813.31	\$128.20	\$86.80	\$1,338.70
2858440	Winchester Crossing Phase 6	Q	2	55	\$17,360.22	\$310.39	\$813.31	\$128.20	\$86.80	\$1,338.70
2858441	Winchester Crossing Phase 6	Q	3	55	\$17,360.22	\$310.39	\$813.31	\$128.20	\$86.80	\$1,338.70
2858442	Winchester Crossing Phase 6	Q	4	55	\$17,360.22	\$310.39	\$813.31	\$128.20	\$86.80	\$1,338.70
2858443	Winchester Crossing Phase 6	Q	5	55	\$17,360.22	\$310.39	\$813.31	\$128.20	\$86.80	\$1,338.70
2858444	Winchester Crossing Phase 6	Q	6	55	\$17,360.22	\$310.39	\$813.31	\$128.20	\$86.80	\$1,338.70
2858445	Winchester Crossing Phase 6	Q	7	55	\$17,360.22	\$310.39	\$813.31	\$128.20	\$86.80	\$1,338.70
2858446	Winchester Crossing Phase 6	Q	8	55	\$17,360.22	\$310.39	\$813.31	\$128.20	\$86.80	\$1,338.70

Parcel	Plat	Block	Lot	Lot Type	Assessment Per Unit	Principal	Interest	Administrative Expenses	Additional Interest	Total Annual Installment
2858447	Winchester Crossing Phase 6	Q	9	55	\$17,360.22	\$310.39	\$813.31	\$128.20	\$86.80	\$1,338.70
2858448	Winchester Crossing Phase 6	Q	10	55	\$17,360.22	\$310.39	\$813.31	\$128.20	\$86.80	\$1,338.70
2858449	Winchester Crossing Phase 6	Q	11	55	\$17,360.22	\$310.39	\$813.31	\$128.20	\$86.80	\$1,338.70
2858450	Winchester Crossing Phase 6	Q	12	55	\$17,360.22	\$310.39	\$813.31	\$128.20	\$86.80	\$1,338.70
2858451	Winchester Crossing Phase 6	Q	13	55	\$17,360.22	\$310.39	\$813.31	\$128.20	\$86.80	\$1,338.70
2858452	Winchester Crossing Phase 6	Q	14	55	\$17,360.22	\$310.39	\$813.31	\$128.20	\$86.80	\$1,338.70
2858453	Winchester Crossing Phase 6	Q	15	55	\$17,360.22	\$310.39	\$813.31	\$128.20	\$86.80	\$1,338.70
2858454	Winchester Crossing Phase 6	Q	16	55	\$17,360.22	\$310.39	\$813.31	\$128.20	\$86.80	\$1,338.70
2858455	Winchester Crossing Phase 6	R	1	55	\$17,360.22	\$310.39	\$813.31	\$128.20	\$86.80	\$1,338.70
2858456	Winchester Crossing Phase 6	R	2	55	\$17,360.22	\$310.39	\$813.31	\$128.20	\$86.80	\$1,338.70
2858457	Winchester Crossing Phase 6	R	3	55	\$17,360.22	\$310.39	\$813.31	\$128.20	\$86.80	\$1,338.70
2858458	Winchester Crossing Phase 6	R	4	55	\$17,360.22	\$310.39	\$813.31	\$128.20	\$86.80	\$1,338.70
2858459	Winchester Crossing Phase 6	R	5	55	\$17,360.22	\$310.39	\$813.31	\$128.20	\$86.80	\$1,338.70
2858460	Winchester Crossing Phase 6	R	6	55	\$17,360.22	\$310.39	\$813.31	\$128.20	\$86.80	\$1,338.70
2858461	Winchester Crossing Phase 6	R	7	55	\$17,360.22	\$310.39	\$813.31	\$128.20	\$86.80	\$1,338.70
2858462	Winchester Crossing Phase 6	R	8	55	\$17,360.22	\$310.39	\$813.31	\$128.20	\$86.80	\$1,338.70
2858463	Winchester Crossing Phase 6	R	9	55	\$17,360.22	\$310.39	\$813.31	\$128.20	\$86.80	\$1,338.70
2858464	Winchester Crossing Phase 6	R	10	55	\$17,360.22	\$310.39	\$813.31	\$128.20	\$86.80	\$1,338.70
2858465	Winchester Crossing Phase 6	R	11	55	\$17,360.22	\$310.39	\$813.31	\$128.20	\$86.80	\$1,338.70
2858466	Winchester Crossing Phase 6	R	12	55	\$17,360.22	\$310.39	\$813.31	\$128.20	\$86.80	\$1,338.70
2858467	Winchester Crossing Phase 6	R	13	55	\$17,360.22	\$310.39	\$813.31	\$128.20	\$86.80	\$1,338.70
2858468	Winchester Crossing Phase 6	R	14	55	\$17,360.22	\$310.39	\$813.31	\$128.20	\$86.80	\$1,338.70
2858469	Winchester Crossing Phase 6	R	15	55	\$17,360.22	\$310.39	\$813.31	\$128.20	\$86.80	\$1,338.70
2858470	Winchester Crossing Phase 6	R	16	55	\$17,360.22	\$310.39	\$813.31	\$128.20	\$86.80	\$1,338.70
2858471	Winchester Crossing Phase 6	S	1	55	\$17,360.22	\$310.39	\$813.31	\$128.20	\$86.80	\$1,338.70
2858472	Winchester Crossing Phase 6	S	2	55	\$17,360.22	\$310.39	\$813.31	\$128.20	\$86.80	\$1,338.70
2858473	Winchester Crossing Phase 6	S	3	55	\$17,360.22	\$310.39	\$813.31	\$128.20	\$86.80	\$1,338.70
2858474	Winchester Crossing Phase 6	S	4	55	\$17,360.22	\$310.39	\$813.31	\$128.20	\$86.80	\$1,338.70
2858475	Winchester Crossing Phase 6	S	5	55	\$17,360.22	\$310.39	\$813.31	\$128.20	\$86.80	\$1,338.70
2858476	Winchester Crossing Phase 6	S	6	55	\$17,360.22	\$310.39	\$813.31	\$128.20	\$86.80	\$1,338.70
2858477	Winchester Crossing Phase 6	S	7	55	\$17,360.22	\$310.39	\$813.31	\$128.20	\$86.80	\$1,338.70
2858478	Winchester Crossing Phase 6	S	8	55	\$17,360.22	\$310.39	\$813.31	\$128.20	\$86.80	\$1,338.70
2859832	Winchester Crossing Phase 7	I	11	55	\$17,360.22	\$310.39	\$813.31	\$128.20	\$86.80	\$1,338.70
2859833	Winchester Crossing Phase 7	I	12	55	\$17,360.22	\$310.39	\$813.31	\$128.20	\$86.80	\$1,338.70
2859834	Winchester Crossing Phase 7	I	13	55	\$17,360.22	\$310.39	\$813.31	\$128.20	\$86.80	\$1,338.70
2859835	Winchester Crossing Phase 7	I	14	55	\$17,360.22	\$310.39	\$813.31	\$128.20	\$86.80	\$1,338.70
2859836	Winchester Crossing Phase 7	I	15	55	\$17,360.22	\$310.39	\$813.31	\$128.20	\$86.80	\$1,338.70

Parcel	Plat	Block	Lot	Lot Type	Assessment Per Unit	Principal	Interest	Administrative Expenses	Additional Interest	Total Annual Installment
2859837	Winchester Crossing Phase 7	I	16	55	\$17,360.22	\$310.39	\$813.31	\$128.20	\$86.80	\$1,338.70
2859838	Winchester Crossing Phase 7	I	17	55	\$17,360.22	\$310.39	\$813.31	\$128.20	\$86.80	\$1,338.70
2859839	Winchester Crossing Phase 7	I	18	55	\$17,360.22	\$310.39	\$813.31	\$128.20	\$86.80	\$1,338.70
2859840	Winchester Crossing Phase 7	I	19	55	\$17,360.22	\$310.39	\$813.31	\$128.20	\$86.80	\$1,338.70
2859841	Winchester Crossing Phase 7	I	20	55	\$17,360.22	\$310.39	\$813.31	\$128.20	\$86.80	\$1,338.70
2859842	Winchester Crossing Phase 7	K	1	55	\$17,360.22	\$310.39	\$813.31	\$128.20	\$86.80	\$1,338.70
2859843	Winchester Crossing Phase 7	K	2	55	\$17,360.22	\$310.39	\$813.31	\$128.20	\$86.80	\$1,338.70
2859844	Winchester Crossing Phase 7	K	3	55	\$17,360.22	\$310.39	\$813.31	\$128.20	\$86.80	\$1,338.70
2859845	Winchester Crossing Phase 7	K	4	55	\$17,360.22	\$310.39	\$813.31	\$128.20	\$86.80	\$1,338.70
2859846	Winchester Crossing Phase 7	K	5	55	\$17,360.22	\$310.39	\$813.31	\$128.20	\$86.80	\$1,338.70
2859847	Winchester Crossing Phase 7	K	6	55	\$17,360.22	\$310.39	\$813.31	\$128.20	\$86.80	\$1,338.70
2859848	Winchester Crossing Phase 7	K	7	55	\$17,360.22	\$310.39	\$813.31	\$128.20	\$86.80	\$1,338.70
2859849	Winchester Crossing Phase 7	K	8	55	\$17,360.22	\$310.39	\$813.31	\$128.20	\$86.80	\$1,338.70
2859850	Winchester Crossing Phase 7	K	9	55	\$17,360.22	\$310.39	\$813.31	\$128.20	\$86.80	\$1,338.70
2859851	Winchester Crossing Phase 7	K	10	55	\$17,360.22	\$310.39	\$813.31	\$128.20	\$86.80	\$1,338.70
2859852	Winchester Crossing Phase 7	K	11	55	\$17,360.22	\$310.39	\$813.31	\$128.20	\$86.80	\$1,338.70
2859853	Winchester Crossing Phase 7	J	2	55	\$17,360.22	\$310.39	\$813.31	\$128.20	\$86.80	\$1,338.70
2859854	Winchester Crossing Phase 7	J	3	55	\$17,360.22	\$310.39	\$813.31	\$128.20	\$86.80	\$1,338.70
2859855	Winchester Crossing Phase 7	J	4	55	\$17,360.22	\$310.39	\$813.31	\$128.20	\$86.80	\$1,338.70
2859856	Winchester Crossing Phase 7	J	5	55	\$17,360.22	\$310.39	\$813.31	\$128.20	\$86.80	\$1,338.70
2859857	Winchester Crossing Phase 7	J	6	55	\$17,360.22	\$310.39	\$813.31	\$128.20	\$86.80	\$1,338.70
2859858	Winchester Crossing Phase 7	J	7	55	\$17,360.22	\$310.39	\$813.31	\$128.20	\$86.80	\$1,338.70
2859859	Winchester Crossing Phase 7	J	8	55	\$17,360.22	\$310.39	\$813.31	\$128.20	\$86.80	\$1,338.70
2859860	Winchester Crossing Phase 7	J	9	55	\$17,360.22	\$310.39	\$813.31	\$128.20	\$86.80	\$1,338.70
2859861	Winchester Crossing Phase 7	J	10	55	\$17,360.22	\$310.39	\$813.31	\$128.20	\$86.80	\$1,338.70
2859862	Winchester Crossing Phase 7	J	11	55	\$17,360.22	\$310.39	\$813.31	\$128.20	\$86.80	\$1,338.70
2859863	Winchester Crossing Phase 7	J	12	55	\$17,360.22	\$310.39	\$813.31	\$128.20	\$86.80	\$1,338.70
2859864	Winchester Crossing Phase 7	J	13	55	\$17,360.22	\$310.39	\$813.31	\$128.20	\$86.80	\$1,338.70
2859865	Winchester Crossing Phase 7	J	14	55	\$17,360.22	\$310.39	\$813.31	\$128.20	\$86.80	\$1,338.70
2859866	Winchester Crossing Phase 7	J	15	55	\$17,360.22	\$310.39	\$813.31	\$128.20	\$86.80	\$1,338.70
2859867	Winchester Crossing Phase 7	J	16	55	\$17,360.22	\$310.39	\$813.31	\$128.20	\$86.80	\$1,338.70
2859868	Winchester Crossing Phase 7	J	17	55	\$17,360.22	\$310.39	\$813.31	\$128.20	\$86.80	\$1,338.70
2859869	Winchester Crossing Phase 7	J	18	55	\$17,360.22	\$310.39	\$813.31	\$128.20	\$86.80	\$1,338.70
2859870	Winchester Crossing Phase 7	J	19	55	\$17,360.22	\$310.39	\$813.31	\$128.20	\$86.80	\$1,338.70
2859871	Winchester Crossing Phase 7	J	20	55	\$17,360.22	\$310.39	\$813.31	\$128.20	\$86.80	\$1,338.70
2859872	Winchester Crossing Phase 7	J	21	55	\$17,360.22	\$310.39	\$813.31	\$128.20	\$86.80	\$1,338.70
2859873	Winchester Crossing Phase 7	J	22	55	\$17,360.22	\$310.39	\$813.31	\$128.20	\$86.80	\$1,338.70

Parcel	Plat	Block	Lot	Lot Type	Assessment Per Unit	Principal	Interest	Administrative Expenses	Additional Interest	Total Annual Installment
2859874	Winchester Crossing Phase 7	J	23	55	\$17,360.22	\$310.39	\$813.31	\$128.20	\$86.80	\$1,338.70
2859875	Winchester Crossing Phase 7	J	24	55	\$17,360.22	\$310.39	\$813.31	\$128.20	\$86.80	\$1,338.70
2859876	Winchester Crossing Phase 7	J	25	55	\$17,360.22	\$310.39	\$813.31	\$128.20	\$86.80	\$1,338.70
2859877	Winchester Crossing Phase 7	J	26	55	\$17,360.22	\$310.39	\$813.31	\$128.20	\$86.80	\$1,338.70
2859878	Winchester Crossing Phase 7	J	27	55	\$17,360.22	\$310.39	\$813.31	\$128.20	\$86.80	\$1,338.70
2859879	Winchester Crossing Phase 7	J	28	55	\$17,360.22	\$310.39	\$813.31	\$128.20	\$86.80	\$1,338.70
2859880	Winchester Crossing Phase 7	J	29	55	\$17,360.22	\$310.39	\$813.31	\$128.20	\$86.80	\$1,338.70
2859881	Winchester Crossing Phase 7	J	30	55	\$17,360.22	\$310.39	\$813.31	\$128.20	\$86.80	\$1,338.70
2859882	Winchester Crossing Phase 7	J	31	55	\$17,360.22	\$310.39	\$813.31	\$128.20	\$86.80	\$1,338.70
2859883	Winchester Crossing Phase 7	J	32	55	\$17,360.22	\$310.39	\$813.31	\$128.20	\$86.80	\$1,338.70
2859884	Winchester Crossing Phase 7	J	33	55	\$17,360.22	\$310.39	\$813.31	\$128.20	\$86.80	\$1,338.70
2859885	Winchester Crossing Phase 7	J	34	55	\$17,360.22	\$310.39	\$813.31	\$128.20	\$86.80	\$1,338.70
2859886	Winchester Crossing Phase 7	J	35	55	\$17,360.22	\$310.39	\$813.31	\$128.20	\$86.80	\$1,338.70
2859887	Winchester Crossing Phase 7	J	36	55	\$17,360.22	\$310.39	\$813.31	\$128.20	\$86.80	\$1,338.70
2859888	Winchester Crossing Phase 7	J	37	55	\$17,360.22	\$310.39	\$813.31	\$128.20	\$86.80	\$1,338.70
2859889	Winchester Crossing Phase 7	J	38	55	\$17,360.22	\$310.39	\$813.31	\$128.20	\$86.80	\$1,338.70
2859890	Winchester Crossing Phase 7	J	39	55	\$17,360.22	\$310.39	\$813.31	\$128.20	\$86.80	\$1,338.70
2859891	Winchester Crossing Phase 7	J	40	55	\$17,360.22	\$310.39	\$813.31	\$128.20	\$86.80	\$1,338.70
2859892	Winchester Crossing Phase 7	J	41	55	\$17,360.22	\$310.39	\$813.31	\$128.20	\$86.80	\$1,338.70
2859893	Winchester Crossing Phase 7	K	12	55	\$17,360.22	\$310.39	\$813.31	\$128.20	\$86.80	\$1,338.70
2859894	Winchester Crossing Phase 7	K	13	55	\$17,360.22	\$310.39	\$813.31	\$128.20	\$86.80	\$1,338.70
2859895	Winchester Crossing Phase 7	K	14	55	\$17,360.22	\$310.39	\$813.31	\$128.20	\$86.80	\$1,338.70
2859896	Winchester Crossing Phase 7	K	15	55	\$17,360.22	\$310.39	\$813.31	\$128.20	\$86.80	\$1,338.70
2859897	Winchester Crossing Phase 7	K	16	55	\$17,360.22	\$310.39	\$813.31	\$128.20	\$86.80	\$1,338.70
2859898	Winchester Crossing Phase 7	K	17	55	\$17,360.22	\$310.39	\$813.31	\$128.20	\$86.80	\$1,338.70
2859899	Winchester Crossing Phase 7	K	18	55	\$17,360.22	\$310.39	\$813.31	\$128.20	\$86.80	\$1,338.70
2859900	Winchester Crossing Phase 7	K	19	55	\$17,360.22	\$310.39	\$813.31	\$128.20	\$86.80	\$1,338.70
2859901	Winchester Crossing Phase 7	K	20	55	\$17,360.22	\$310.39	\$813.31	\$128.20	\$86.80	\$1,338.70
2859902	Winchester Crossing Phase 7	K	21	55	\$17,360.22	\$310.39	\$813.31	\$128.20	\$86.80	\$1,338.70
2859903	Winchester Crossing Phase 7	K	22	55	\$17,360.22	\$310.39	\$813.31	\$128.20	\$86.80	\$1,338.70
2859904	Winchester Crossing Phase 7	S	9	55	\$17,360.22	\$310.39	\$813.31	\$128.20	\$86.80	\$1,338.70
2859905	Winchester Crossing Phase 7	S	10	55	\$17,360.22	\$310.39	\$813.31	\$128.20	\$86.80	\$1,338.70
2859906	Winchester Crossing Phase 7	S	11	55	\$17,360.22	\$310.39	\$813.31	\$128.20	\$86.80	\$1,338.70
2859907	Winchester Crossing Phase 7	S	12	55	\$17,360.22	\$310.39	\$813.31	\$128.20	\$86.80	\$1,338.70
2859908	Winchester Crossing Phase 7	S	13	55	\$17,360.22	\$310.39	\$813.31	\$128.20	\$86.80	\$1,338.70
2859909	Winchester Crossing Phase 7	S	14	55	\$17,360.22	\$310.39	\$813.31	\$128.20	\$86.80	\$1,338.70
2859910	Winchester Crossing Phase 7	S	15	55	\$17,360.22	\$310.39	\$813.31	\$128.20	\$86.80	\$1,338.70

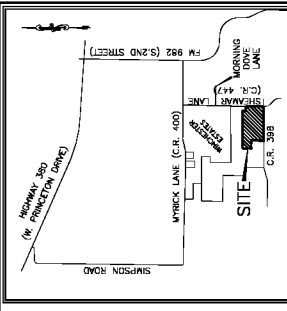
Parcel	Plat	Block	Lot	Lot Type	Assessment Per Unit	Principal	Interest	Administrative Expenses	Additional Interest	Total Annual Installment
2859911	Winchester Crossing Phase 7	S	16	55	\$17,360.22	\$310.39	\$813.31	\$128.20	\$86.80	\$1,338.70
2859912	Winchester Crossing Phase 7	T	1	55	\$17,360.22	\$310.39	\$813.31	\$128.20	\$86.80	\$1,338.70
2859913	Winchester Crossing Phase 7	T	2	55	\$17,360.22	\$310.39	\$813.31	\$128.20	\$86.80	\$1,338.70
2859914	Winchester Crossing Phase 7	T	3	55	\$17,360.22	\$310.39	\$813.31	\$128.20	\$86.80	\$1,338.70
2859915	Winchester Crossing Phase 7	T	4	55	\$17,360.22	\$310.39	\$813.31	\$128.20	\$86.80	\$1,338.70
2859916	Winchester Crossing Phase 7	T	5	55	\$17,360.22	\$310.39	\$813.31	\$128.20	\$86.80	\$1,338.70
2859917	Winchester Crossing Phase 7	T	6	55	\$17,360.22	\$310.39	\$813.31	\$128.20	\$86.80	\$1,338.70
2859918	Winchester Crossing Phase 7	T	7	55	\$17,360.22	\$310.39	\$813.31	\$128.20	\$86.80	\$1,338.70
2859919	Winchester Crossing Phase 7	T	8	55	\$17,360.22	\$310.39	\$813.31	\$128.20	\$86.80	\$1,338.70
2859920	Winchester Crossing Phase 7	T	9	55	\$17,360.22	\$310.39	\$813.31	\$128.20	\$86.80	\$1,338.70
2859921	Winchester Crossing Phase 7	T	10	55	\$17,360.22	\$310.39	\$813.31	\$128.20	\$86.80	\$1,338.70
2859922	Winchester Crossing Phase 7	T	11	55	\$17,360.22	\$310.39	\$813.31	\$128.20	\$86.80	\$1,338.70
2859923	Winchester Crossing Phase 7	T	12	55	\$17,360.22	\$310.39	\$813.31	\$128.20	\$86.80	\$1,338.70
2859924	Winchester Crossing Phase 7	T	13	55	\$17,360.22	\$310.39	\$813.31	\$128.20	\$86.80	\$1,338.70
2859925	Winchester Crossing Phase 7	T	14	55	\$17,360.22	\$310.39	\$813.31	\$128.20	\$86.80	\$1,338.70
2859926	Winchester Crossing Phase 7	T	15	55	\$17,360.22	\$310.39	\$813.31	\$128.20	\$86.80	\$1,338.70
2859927	Winchester Crossing Phase 7	T	16	55	\$17,360.22	\$310.39	\$813.31	\$128.20	\$86.80	\$1,338.70
2859928	Winchester Crossing Phase 7	U	1	55	\$17,360.22	\$310.39	\$813.31	\$128.20	\$86.80	\$1,338.70
2859929	Winchester Crossing Phase 7	U	2	55	\$17,360.22	\$310.39	\$813.31	\$128.20	\$86.80	\$1,338.70
2859930	Winchester Crossing Phase 7	U	3	55	\$17,360.22	\$310.39	\$813.31	\$128.20	\$86.80	\$1,338.70
2859931	Winchester Crossing Phase 7	U	4	55	\$17,360.22	\$310.39	\$813.31	\$128.20	\$86.80	\$1,338.70
2859932	Winchester Crossing Phase 7	U	5	55	\$17,360.22	\$310.39	\$813.31	\$128.20	\$86.80	\$1,338.70
2859933	Winchester Crossing Phase 7	U	6	55	\$17,360.22	\$310.39	\$813.31	\$128.20	\$86.80	\$1,338.70
2859934	Winchester Crossing Phase 7	U	7	55	\$17,360.22	\$310.39	\$813.31	\$128.20	\$86.80	\$1,338.70
2859935	Winchester Crossing Phase 7	U	8	55	\$17,360.22	\$310.39	\$813.31	\$128.20	\$86.80	\$1,338.70
2859936	Winchester Crossing Phase 7	U	9	55	\$17,360.22	\$310.39	\$813.31	\$128.20	\$86.80	\$1,338.70
2859937	Winchester Crossing Phase 7	U	10	55	\$17,360.22	\$310.39	\$813.31	\$128.20	\$86.80	\$1,338.70
2859938	Winchester Crossing Phase 7	U	11	55	\$17,360.22	\$310.39	\$813.31	\$128.20	\$86.80	\$1,338.70
2859939	Winchester Crossing Phase 7	U	12	55	\$17,360.22	\$310.39	\$813.31	\$128.20	\$86.80	\$1,338.70
2859940	Winchester Crossing Phase 7	U	13	55	\$17,360.22	\$310.39	\$813.31	\$128.20	\$86.80	\$1,338.70
2859941	Winchester Crossing Phase 7	U	14	55	\$17,360.22	\$310.39	\$813.31	\$128.20	\$86.80	\$1,338.70
2859942	Winchester Crossing Phase 7	U	15	55	\$17,360.22	\$310.39	\$813.31	\$128.20	\$86.80	\$1,338.70
2859943	Winchester Crossing Phase 7	U	16	55	\$17,360.22	\$310.39	\$813.31	\$128.20	\$86.80	\$1,338.70
2859944	Winchester Crossing Phase 7	V	1	55	\$17,360.22	\$310.39	\$813.31	\$128.20	\$86.80	\$1,338.70
2859945	Winchester Crossing Phase 7	V	2	55	\$17,360.22	\$310.39	\$813.31	\$128.20	\$86.80	\$1,338.70
2859946	Winchester Crossing Phase 7	V	3	55	\$17,360.22	\$310.39	\$813.31	\$128.20	\$86.80	\$1,338.70
2859947	Winchester Crossing Phase 7	W	1	55	\$17,360.22	\$310.39	\$813.31	\$128.20	\$86.80	\$1,338.70

Parcel	Plat	Block	Lot	Lot Type	Assessment Per Unit	Principal	Interest	Administrative Expenses	Additional Interest	Total Annual Installment
2859948	Winchester Crossing Phase 7	W	2	55	\$17,360.22	\$310.39	\$813.31	\$128.20	\$86.80	\$1,338.70
2859949	Winchester Crossing Phase 7	W	3	55	\$17,360.22	\$310.39	\$813.31	\$128.20	\$86.80	\$1,338.70
2859950	Winchester Crossing Phase 7	W	4	55	\$17,360.22	\$310.39	\$813.31	\$128.20	\$86.80	\$1,338.70
2859951	Winchester Crossing Phase 7	W	5	55	\$17,360.22	\$310.39	\$813.31	\$128.20	\$86.80	\$1,338.70
2859952	Winchester Crossing Phase 7	W	6	55	\$17,360.22	\$310.39	\$813.31	\$128.20	\$86.80	\$1,338.70
2859953	Winchester Crossing Phase 7	X	1	55	\$17,360.22	\$310.39	\$813.31	\$128.20	\$86.80	\$1,338.70
2859954	Winchester Crossing Phase 7	X	2	55	\$17,360.22	\$310.39	\$813.31	\$128.20	\$86.80	\$1,338.70
2859955	Winchester Crossing Phase 7	X	3	55	\$17,360.22	\$310.39	\$813.31	\$128.20	\$86.80	\$1,338.70
2859956	Winchester Crossing Phase 7	X	4	55	\$17,360.22	\$310.39	\$813.31	\$128.20	\$86.80	\$1,338.70
2859957	Winchester Crossing Phase 7	X	5	55	\$17,360.22	\$310.39	\$813.31	\$128.20	\$86.80	\$1,338.70
2859958	Winchester Crossing Phase 7	X	6	55	\$17,360.22	\$310.39	\$813.31	\$128.20	\$86.80	\$1,338.70
2859959	Winchester Crossing Phase 7	X	7	55	\$17,360.22	\$310.39	\$813.31	\$128.20	\$86.80	\$1,338.70
2859960	Winchester Crossing Phase 7	X	8	55	\$17,360.22	\$310.39	\$813.31	\$128.20	\$86.80	\$1,338.70
2859961	Winchester Crossing Phase 7	X	9	55	\$17,360.22	\$310.39	\$813.31	\$128.20	\$86.80	\$1,338.70
2859962	Winchester Crossing Phase 7	X	10	55	\$17,360.22	\$310.39	\$813.31	\$128.20	\$86.80	\$1,338.70
2859963	Winchester Crossing Phase 7	X	11	55	\$17,360.22	\$310.39	\$813.31	\$128.20	\$86.80	\$1,338.70
2859964	Winchester Crossing Phase 7	Y	1	55	\$17,360.22	\$310.39	\$813.31	\$128.20	\$86.80	\$1,338.70
2859965	Winchester Crossing Phase 7	Y	2	55	\$17,360.22	\$310.39	\$813.31	\$128.20	\$86.80	\$1,338.70
2859966	Winchester Crossing Phase 7	Y	3	55	\$17,360.22	\$310.39	\$813.31	\$128.20	\$86.80	\$1,338.70
2859967	Winchester Crossing Phase 7	Y	4	55	\$17,360.22	\$310.39	\$813.31	\$128.20	\$86.80	\$1,338.70
2859968	Winchester Crossing Phase 7	Y	5	55	\$17,360.22	\$310.39	\$813.31	\$128.20	\$86.80	\$1,338.70
2859969	Winchester Crossing Phase 7	Y	6	55	\$17,360.22	\$310.39	\$813.31	\$128.20	\$86.80	\$1,338.70
2859970	Winchester Crossing Phase 7	Y	7	55	\$17,360.22	\$310.39	\$813.31	\$128.20	\$86.80	\$1,338.70
2859971	Winchester Crossing Phase 7	Y	8	55	\$17,360.22	\$310.39	\$813.31	\$128.20	\$86.80	\$1,338.70
2859972	Winchester Crossing Phase 7	Y	9	55	\$17,360.22	\$310.39	\$813.31	\$128.20	\$86.80	\$1,338.70
2859973	Winchester Crossing Phase 7	Y	10	55	\$17,360.22	\$310.39	\$813.31	\$128.20	\$86.80	\$1,338.70
2859974	Winchester Crossing Phase 7	Z	1	55	\$17,360.22	\$310.39	\$813.31	\$128.20	\$86.80	\$1,338.70
2859975	Winchester Crossing Phase 7	Z	2	55	\$17,360.22	\$310.39	\$813.31	\$128.20	\$86.80	\$1,338.70
2859976	Winchester Crossing Phase 7	Z	3	55	\$17,360.22	\$310.39	\$813.31	\$128.20	\$86.80	\$1,338.70
2859977	Winchester Crossing Phase 7	Z	4	55	\$17,360.22	\$310.39	\$813.31	\$128.20	\$86.80	\$1,338.70
2859978	Winchester Crossing Phase 7	Z	5	55	\$17,360.22	\$310.39	\$813.31	\$128.20	\$86.80	\$1,338.70
2859979	Winchester Crossing Phase 7	Z	6	55	\$17,360.22	\$310.39	\$813.31	\$128.20	\$86.80	\$1,338.70
2859980	Winchester Crossing Phase 7	Z	7	55	\$17,360.22	\$310.39	\$813.31	\$128.20	\$86.80	\$1,338.70
2859981	Winchester Crossing Phase 7	Z	8	55	\$17,360.22	\$310.39	\$813.31	\$128.20	\$86.80	\$1,338.70
2859982	Winchester Crossing Phase 7	Z	9	55	\$17,360.22	\$310.39	\$813.31	\$128.20	\$86.80	\$1,338.70
2859983	Winchester Crossing Phase 7	Z	10	55	\$17,360.22	\$310.39	\$813.31	\$128.20	\$86.80	\$1,338.70
2859984	Winchester Crossing Phase 7	Z	11	55	\$17,360.22	\$310.39	\$813.31	\$128.20	\$86.80	\$1,338.70

Parcel	Plat	Block	Lot	Lot Type	Assessment Per Unit	Principal	Interest	Administrative Expenses	Additional Interest	Total Annual Installment
2859985	Winchester Crossing Phase 7	Z	12	55	\$17,360.22	\$310.39	\$813.31	\$128.20	\$86.80	\$1,338.70
2859986	Winchester Crossing Phase 7	Z	13	55	\$17,360.22	\$310.39	\$813.31	\$128.20	\$86.80	\$1,338.70
2859987	Winchester Crossing Phase 7	Z	14	55	\$17,360.22	\$310.39	\$813.31	\$128.20	\$86.80	\$1,338.70
2859988	Winchester Crossing Phase 7	Z	15	55	\$17,360.22	\$310.39	\$813.31	\$128.20	\$86.80	\$1,338.70
2859989	Winchester Crossing Phase 7	Z	16	55	\$17,360.22	\$310.39	\$813.31	\$128.20	\$86.80	\$1,338.70
2859990	Winchester Crossing Phase 7	Z	17	55	\$17,360.22	\$310.39	\$813.31	\$128.20	\$86.80	\$1,338.70
2859991	Winchester Crossing Phase 7	Z	18	55	\$17,360.22	\$310.39	\$813.31	\$128.20	\$86.80	\$1,338.70
2859992	Winchester Crossing Phase 7	Z	19	55	\$17,360.22	\$310.39	\$813.31	\$128.20	\$86.80	\$1,338.70
2859993	Winchester Crossing Phase 7	Z	20	55	\$17,360.22	\$310.39	\$813.31	\$128.20	\$86.80	\$1,338.70
2859994	Winchester Crossing Phase 7	Z	21	55	\$17,360.22	\$310.39	\$813.31	\$128.20	\$86.80	\$1,338.70
2859995	Winchester Crossing Phase 7	Z	22	55	\$17,360.22	\$310.39	\$813.31	\$128.20	\$86.80	\$1,338.70
2859996	Winchester Crossing Phase 7	Z	23	55	\$17,360.22	\$310.39	\$813.31	\$128.20	\$86.80	\$1,338.70
2859997	Winchester Crossing Phase 7	X	12	55	\$17,360.22	\$310.39	\$813.31	\$128.20	\$86.80	\$1,338.70
2859998	Winchester Crossing Phase 7	X	13	55	\$17,360.22	\$310.39	\$813.31	\$128.20	\$86.80	\$1,338.70
2859999	Winchester Crossing Phase 7	X	14	55	\$17,360.22	\$310.39	\$813.31	\$128.20	\$86.80	\$1,338.70
2860000	Winchester Crossing Phase 7	X	15	55	\$17,360.22	\$310.39	\$813.31	\$128.20	\$86.80	\$1,338.70
2860001	Winchester Crossing Phase 7	X	16	55	\$17,360.22	\$310.39	\$813.31	\$128.20	\$86.80	\$1,338.70
2860002	Winchester Crossing Phase 7	X	17	55	\$17,360.22	\$310.39	\$813.31	\$128.20	\$86.80	\$1,338.70
2860003	Winchester Crossing Phase 7	X	18	55	\$17,360.22	\$310.39	\$813.31	\$128.20	\$86.80	\$1,338.70
2860004	Winchester Crossing Phase 7	X	19	55	\$17,360.22	\$310.39	\$813.31	\$128.20	\$86.80	\$1,338.70
2860005	Winchester Crossing Phase 7	X	20	55	\$8,680.11	\$155.19	\$406.65	\$64.10	\$43.40	\$669.35
2919050	Winchester Crossing Phase 7				\$8,680.11	\$155.19	\$406.65	\$64.10	\$43.40	\$669.35
2860006	Winchester Crossing Phase 7	X	21	55	\$17,360.22	\$310.39	\$813.31	\$128.20	\$86.80	\$1,338.70
2860007	Winchester Crossing Phase 7	AA	21	55	\$17,360.22	\$310.39	\$813.31	\$128.20	\$86.80	\$1,338.70
2860008	Winchester Crossing Phase 7	AA	22	55	\$17,360.22	\$310.39	\$813.31	\$128.20	\$86.80	\$1,338.70
2860009	Winchester Crossing Phase 7	AA	23	55	\$17,360.22	\$310.39	\$813.31	\$128.20	\$86.80	\$1,338.70
2860010	Winchester Crossing Phase 7	AA	24	55	\$17,360.22	\$310.39	\$813.31	\$128.20	\$86.80	\$1,338.70
2860011	Winchester Crossing Phase 7	AA	25	55	\$17,360.22	\$310.39	\$813.31	\$128.20	\$86.80	\$1,338.70
2860012	Winchester Crossing Phase 7	AA	26	55	\$17,360.22	\$310.39	\$813.31	\$128.20	\$86.80	\$1,338.70
2860013	Winchester Crossing Phase 7	AA	27	55	\$17,360.22	\$310.39	\$813.31	\$128.20	\$86.80	\$1,338.70
2860014	Winchester Crossing Phase 7	AA	28	55	\$17,360.22	\$310.39	\$813.31	\$128.20	\$86.80	\$1,338.70
2860015	Winchester Crossing Phase 7	AA	29	55	\$17,360.22	\$310.39	\$813.31	\$128.20	\$86.80	\$1,338.70
2860016	Winchester Crossing Phase 7	AA	30	55	\$17,360.22	\$310.39	\$813.31	\$128.20	\$86.80	\$1,338.70
2860017	Winchester Crossing Phase 7	BB	1	55	\$17,360.22	\$310.39	\$813.31	\$128.20	\$86.80	\$1,338.70
2860018	Winchester Crossing Phase 7	BB	2	55	\$17,360.22	\$310.39	\$813.31	\$128.20	\$86.80	\$1,338.70
2860019	Winchester Crossing Phase 7	BB	3	55	\$17,360.22	\$310.39	\$813.31	\$128.20	\$86.80	\$1,338.70
2860020	Winchester Crossing Phase 7	BB	4	55	\$17,360.22	\$310.39	\$813.31	\$128.20	\$86.80	\$1,338.70

Parcel	Plat	Block	Lot	Lot Type	Assessment Per Unit	Principal	Interest	Administrative Expenses	Additional Interest	Total Annual Installment
2860058	Winchester Crossing Phase 7	Y	11X	Non-Benefited	\$0.00	\$0.00	\$0.00	\$0.00	\$0.00	\$0.00
2860059	Winchester Crossing Phase 7	Y	12X	Non-Benefited	\$0.00	\$0.00	\$0.00	\$0.00	\$0.00	\$0.00
2860060	Winchester Crossing Phase 7	Z	24X	Non-Benefited	\$0.00	\$0.00	\$0.00	\$0.00	\$0.00	\$0.00
2860061	Winchester Crossing Phase 7	AA	31X	Non-Benefited	\$0.00	\$0.00	\$0.00	\$0.00	\$0.00	\$0.00
2860062	Winchester Crossing Phase 7	CC	10X	Non-Benefited	\$0.00	\$0.00	\$0.00	\$0.00	\$0.00	\$0.00
2860092	Winchester Crossing Phase 7	R	1	Non-Benefited	\$0.00	\$0.00	\$0.00	\$0.00	\$0.00	\$0.00
737					\$12,864,000.00	\$230,000.00	\$602,663.76	\$95,000.00	\$64,320.00	\$991,983.76

APPENDIX C
FINAL PLATS



- LEGEND**
- FOR POINT OF BEGINNING
 - BY RIGHT-OF-WAY
 - UTILITY EASEMENT
 - WALL MAINTENANCE EASEMENT
 - EASEMENT LINE
 - HANE OWNER ASSOCIATION
 - SEAMANT EASEMENT
 - SANITARY SEWER EASEMENT

- NOTES**
1. "NOTICE SELLING A PORTION OF THIS ADDITION BY METES AND BOUNDS IS A VIOLATION OF CITY ORDINANCE AND STATE LAW AND IS SUBJECT TO FINES AND PENALTIES."
 2. "THE CITY OF PRINCETON, TEXAS, HAS THE HONORABLE DUTY TO PROTECT AS MUCH AS POSSIBLE THE PUBLIC INTERESTS OF THE CITY AND TO ENFORCE THE CITY ORDINANCES."
 3. "THE CITY OF PRINCETON, TEXAS, HAS THE HONORABLE DUTY TO ENFORCE THE CITY ORDINANCES AND TO PROTECT THE PUBLIC INTERESTS OF THE CITY."
 4. "THE CITY OF PRINCETON, TEXAS, HAS THE HONORABLE DUTY TO ENFORCE THE CITY ORDINANCES AND TO PROTECT THE PUBLIC INTERESTS OF THE CITY."
 5. "THE CITY OF PRINCETON, TEXAS, HAS THE HONORABLE DUTY TO ENFORCE THE CITY ORDINANCES AND TO PROTECT THE PUBLIC INTERESTS OF THE CITY."
 6. "THE CITY OF PRINCETON, TEXAS, HAS THE HONORABLE DUTY TO ENFORCE THE CITY ORDINANCES AND TO PROTECT THE PUBLIC INTERESTS OF THE CITY."
 7. "THE CITY OF PRINCETON, TEXAS, HAS THE HONORABLE DUTY TO ENFORCE THE CITY ORDINANCES AND TO PROTECT THE PUBLIC INTERESTS OF THE CITY."

FINAL PLAT
WINCHESTER CROSSING
PHASE 6

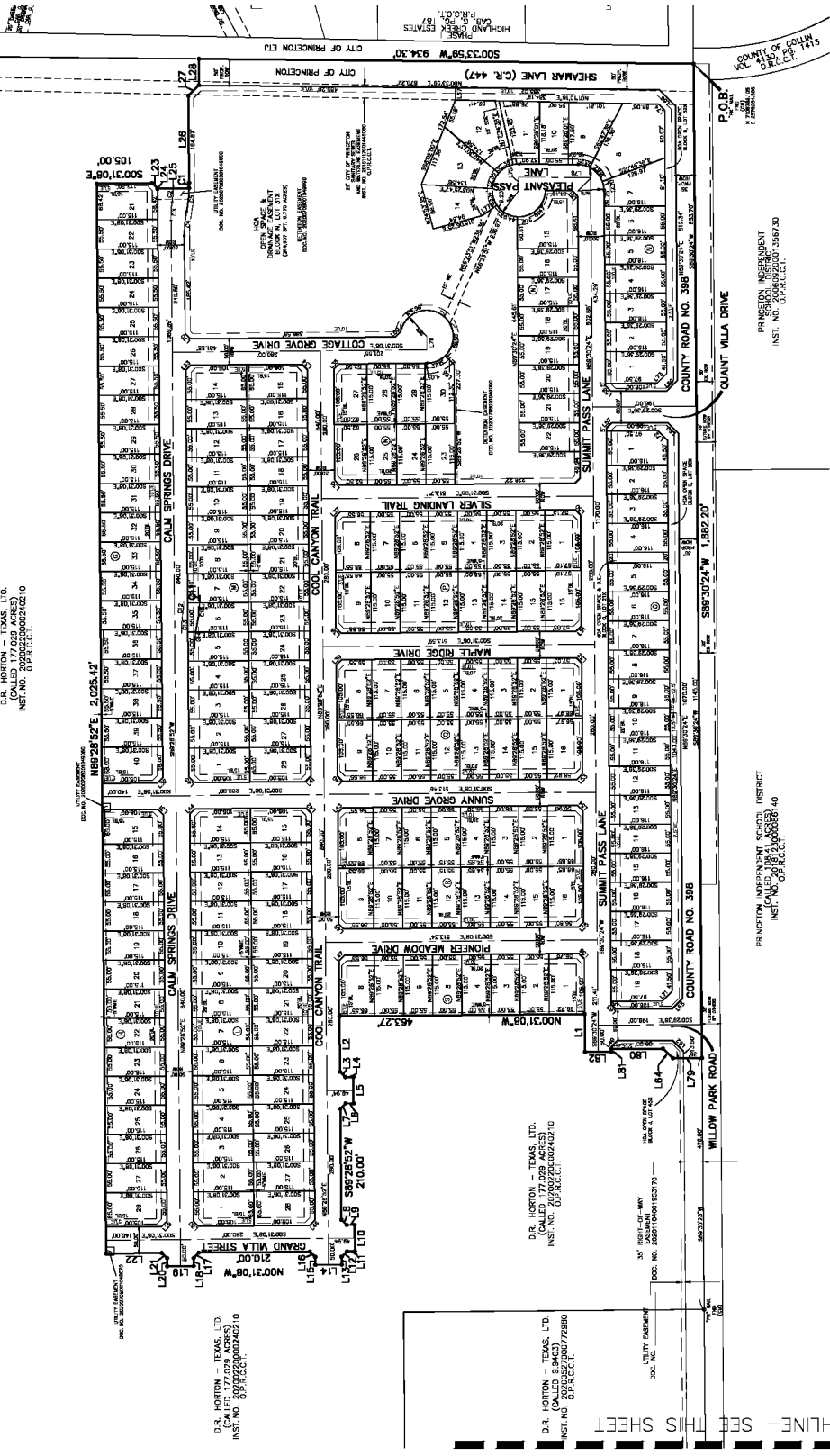
BLOCK G, LOTS 21-40; BLOCK H, LOTS 15-26;
BLOCK J, LOT 43; BLOCK K, LOTS 1-28;
BLOCK L, LOTS 1-28; BLOCK M, LOTS 1-30, 31A-32A;
BLOCK N, LOTS 1-19, 20A-24H; BLOCK O, LOTS 1-16;
BLOCK P, LOTS 1-16; BLOCK Q, LOTS 1-16; BLOCK R, LOTS 1-16

195 LOTS, 5 OPEN SPACES
BEING 50.837 ACRES OUT OF THE
HARDIN WRIGHT SURVEY, ABSTRACT NO. 897
CITY OF PRINCETON,
COLLIN COUNTY, TEXAS

LOTS DEVELOPED PER SF-2 STANDARDS

OWNER
D.R. HORTON-TEXAS, LTD.
4308 Miller Road, Suite A
Rowlett, Texas 75088
Contact: David L. Booth

SURVEYOR/ENGINEER
JBI PARTNERS, INC.
2171 Wilshire Blvd., Suite 300
Carrollton, Texas 75006
Contact: Lew Reddy, P.E.
Tel. No. 7-181 1992 N. 106600



ZONING DATA TABLE

STANDARDS	SF-2
MIN. LOT AREA	9,000 S.F.
MIN. LOT WIDTH	35 FT.
MIN. LOT DEPTH	100 FT.
MIN. FRONT YARD	20 FT.
MIN. SIDE YARD	15 FT.
MIN. REAR YARD	7.5 FT.
MIN. REAR YARD	20 FT.

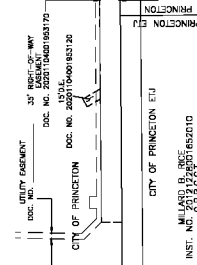
CHANCE TABLE

NO.	LENGTH	BEARING	INCHES	CHORD BEARING	CHORD
C1	11.000'	S00°17'08"W	28.000'	N45°	10.000'
C2	24.537'	S00°17'08"W	12.500'	S00°17'08"W	24.537'
C3	30.308'	S00°17'08"W	17.777'	S00°17'08"W	30.308'
C4	44.887'	S00°17'08"W	23.887'	S00°17'08"W	44.887'
C5	44.887'	S00°17'08"W	23.887'	S00°17'08"W	44.887'

LINE TABLE

NO.	BEARING	LENGTH	NO.	BEARING	LENGTH	NO.	BEARING	LENGTH	NO.	BEARING	LENGTH
L1	S89°52'24"W	1,862.20'	L1	S89°52'24"W	1,862.20'	L1	S89°52'24"W	1,862.20'	L1	S89°52'24"W	1,862.20'
L2	S89°52'24"W	1,862.20'	L2	S89°52'24"W	1,862.20'	L2	S89°52'24"W	1,862.20'	L2	S89°52'24"W	1,862.20'
L3	S89°52'24"W	1,862.20'	L3	S89°52'24"W	1,862.20'	L3	S89°52'24"W	1,862.20'	L3	S89°52'24"W	1,862.20'
L4	S89°52'24"W	1,862.20'	L4	S89°52'24"W	1,862.20'	L4	S89°52'24"W	1,862.20'	L4	S89°52'24"W	1,862.20'
L5	S89°52'24"W	1,862.20'	L5	S89°52'24"W	1,862.20'	L5	S89°52'24"W	1,862.20'	L5	S89°52'24"W	1,862.20'
L6	S89°52'24"W	1,862.20'	L6	S89°52'24"W	1,862.20'	L6	S89°52'24"W	1,862.20'	L6	S89°52'24"W	1,862.20'
L7	S89°52'24"W	1,862.20'	L7	S89°52'24"W	1,862.20'	L7	S89°52'24"W	1,862.20'	L7	S89°52'24"W	1,862.20'
L8	S89°52'24"W	1,862.20'	L8	S89°52'24"W	1,862.20'	L8	S89°52'24"W	1,862.20'	L8	S89°52'24"W	1,862.20'
L9	S89°52'24"W	1,862.20'	L9	S89°52'24"W	1,862.20'	L9	S89°52'24"W	1,862.20'	L9	S89°52'24"W	1,862.20'
L10	S89°52'24"W	1,862.20'	L10	S89°52'24"W	1,862.20'	L10	S89°52'24"W	1,862.20'	L10	S89°52'24"W	1,862.20'
L11	S89°52'24"W	1,862.20'	L11	S89°52'24"W	1,862.20'	L11	S89°52'24"W	1,862.20'	L11	S89°52'24"W	1,862.20'
L12	S89°52'24"W	1,862.20'	L12	S89°52'24"W	1,862.20'	L12	S89°52'24"W	1,862.20'	L12	S89°52'24"W	1,862.20'
L13	S89°52'24"W	1,862.20'	L13	S89°52'24"W	1,862.20'	L13	S89°52'24"W	1,862.20'	L13	S89°52'24"W	1,862.20'
L14	S89°52'24"W	1,862.20'	L14	S89°52'24"W	1,862.20'	L14	S89°52'24"W	1,862.20'	L14	S89°52'24"W	1,862.20'

MATCHLINE - SEE THIS SHEET



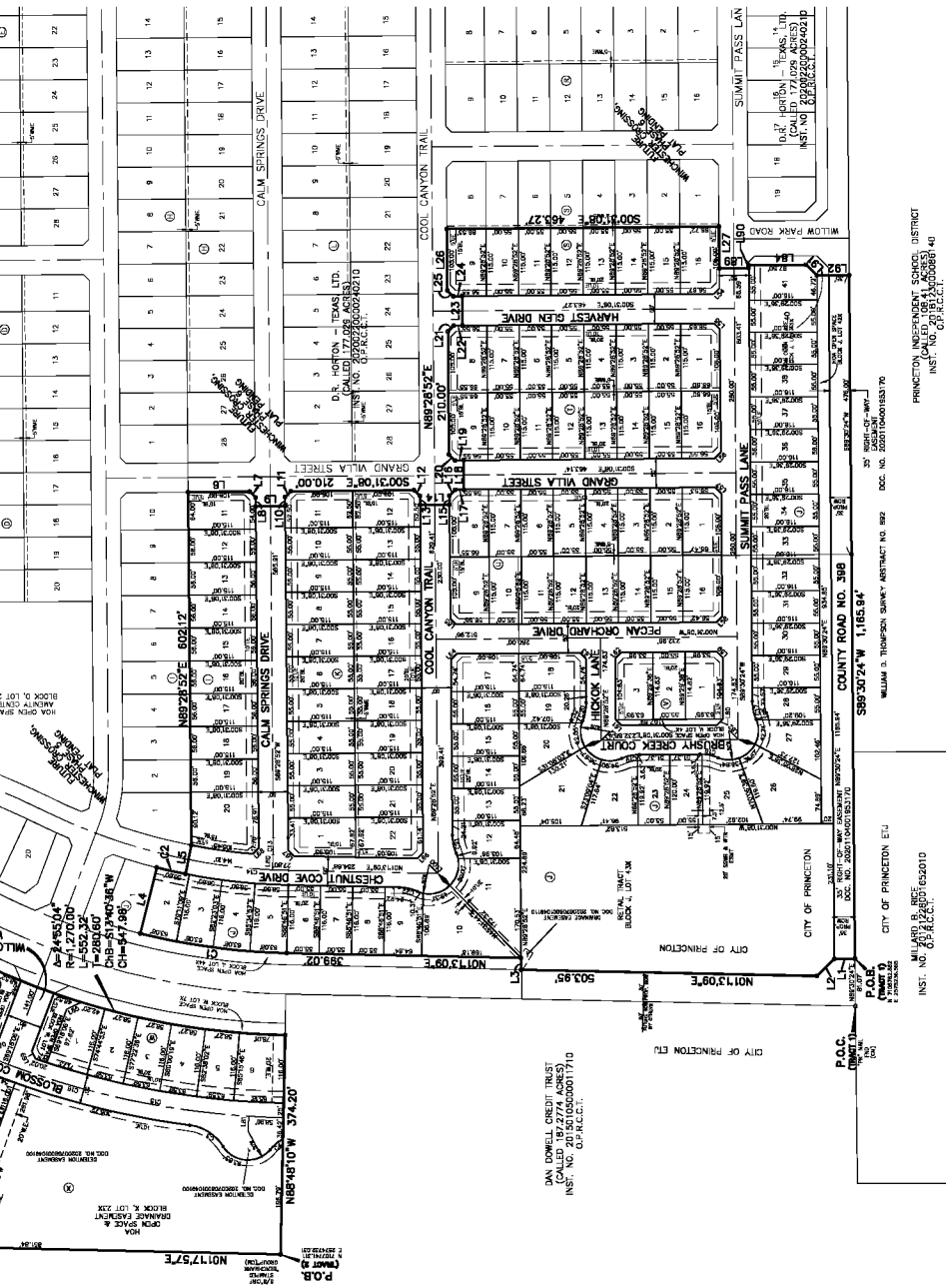
D.R. HORTON - TEXAS, LTD.
(CALLED 177.029 ACRES)
INST. NO. 202100002402.0

D.R. HORTON - TEXAS, LTD.
(CALLED 177.029 ACRES)
INST. NO. 202100002402.0

D.R. HORTON - TEXAS, LTD.
(CALLED 9.8403 ACRES)
INST. NO. 202100007298.0

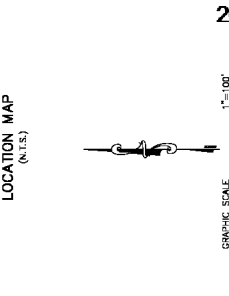
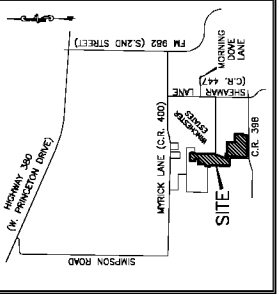
MATCHLINE - SEE THIS SHEET

TRACT 2 SEE SHEET 2



NO.	LENGTH	BETA	RADIUS	CHORD BEARING	CHORD	CHORD BEARING
C1	503.95	0°00'00"	0.00	N00°00'00"W	503.95	N00°00'00"W
C2	503.95	90°00'00"	0.00	E090°00'00"E	503.95	E090°00'00"E
C3	503.95	0°00'00"	0.00	N00°00'00"W	503.95	N00°00'00"W
C4	503.95	90°00'00"	0.00	E090°00'00"E	503.95	E090°00'00"E
C5	503.95	0°00'00"	0.00	N00°00'00"W	503.95	N00°00'00"W
C6	503.95	90°00'00"	0.00	E090°00'00"E	503.95	E090°00'00"E
C7	503.95	0°00'00"	0.00	N00°00'00"W	503.95	N00°00'00"W
C8	503.95	90°00'00"	0.00	E090°00'00"E	503.95	E090°00'00"E
C9	503.95	0°00'00"	0.00	N00°00'00"W	503.95	N00°00'00"W
C10	503.95	90°00'00"	0.00	E090°00'00"E	503.95	E090°00'00"E
C11	503.95	0°00'00"	0.00	N00°00'00"W	503.95	N00°00'00"W
C12	503.95	90°00'00"	0.00	E090°00'00"E	503.95	E090°00'00"E
C13	503.95	0°00'00"	0.00	N00°00'00"W	503.95	N00°00'00"W
C14	503.95	90°00'00"	0.00	E090°00'00"E	503.95	E090°00'00"E
C15	503.95	0°00'00"	0.00	N00°00'00"W	503.95	N00°00'00"W
C16	503.95	90°00'00"	0.00	E090°00'00"E	503.95	E090°00'00"E
C17	503.95	0°00'00"	0.00	N00°00'00"W	503.95	N00°00'00"W
C18	503.95	90°00'00"	0.00	E090°00'00"E	503.95	E090°00'00"E
C19	503.95	0°00'00"	0.00	N00°00'00"W	503.95	N00°00'00"W
C20	503.95	90°00'00"	0.00	E090°00'00"E	503.95	E090°00'00"E
C21	503.95	0°00'00"	0.00	N00°00'00"W	503.95	N00°00'00"W
C22	503.95	90°00'00"	0.00	E090°00'00"E	503.95	E090°00'00"E
C23	503.95	0°00'00"	0.00	N00°00'00"W	503.95	N00°00'00"W
C24	503.95	90°00'00"	0.00	E090°00'00"E	503.95	E090°00'00"E
C25	503.95	0°00'00"	0.00	N00°00'00"W	503.95	N00°00'00"W
C26	503.95	90°00'00"	0.00	E090°00'00"E	503.95	E090°00'00"E
C27	503.95	0°00'00"	0.00	N00°00'00"W	503.95	N00°00'00"W
C28	503.95	90°00'00"	0.00	E090°00'00"E	503.95	E090°00'00"E
C29	503.95	0°00'00"	0.00	N00°00'00"W	503.95	N00°00'00"W
C30	503.95	90°00'00"	0.00	E090°00'00"E	503.95	E090°00'00"E

LINE	BEARING	LENGTH	NO.	BEARING	LENGTH	NO.	BEARING	LENGTH	NO.	BEARING	LENGTH
L1	N00°00'00"W	20.00	L1	N00°00'00"W	20.00	L1	N00°00'00"W	20.00	L1	N00°00'00"W	20.00
L2	E090°00'00"E	20.00	L2	E090°00'00"E	20.00	L2	E090°00'00"E	20.00	L2	E090°00'00"E	20.00
L3	N00°00'00"W	20.00	L3	N00°00'00"W	20.00	L3	N00°00'00"W	20.00	L3	N00°00'00"W	20.00
L4	E090°00'00"E	20.00	L4	E090°00'00"E	20.00	L4	E090°00'00"E	20.00	L4	E090°00'00"E	20.00
L5	N00°00'00"W	20.00	L5	N00°00'00"W	20.00	L5	N00°00'00"W	20.00	L5	N00°00'00"W	20.00
L6	E090°00'00"E	20.00	L6	E090°00'00"E	20.00	L6	E090°00'00"E	20.00	L6	E090°00'00"E	20.00
L7	N00°00'00"W	20.00	L7	N00°00'00"W	20.00	L7	N00°00'00"W	20.00	L7	N00°00'00"W	20.00
L8	E090°00'00"E	20.00	L8	E090°00'00"E	20.00	L8	E090°00'00"E	20.00	L8	E090°00'00"E	20.00
L9	N00°00'00"W	20.00	L9	N00°00'00"W	20.00	L9	N00°00'00"W	20.00	L9	N00°00'00"W	20.00
L10	E090°00'00"E	20.00	L10	E090°00'00"E	20.00	L10	E090°00'00"E	20.00	L10	E090°00'00"E	20.00
L11	N00°00'00"W	20.00	L11	N00°00'00"W	20.00	L11	N00°00'00"W	20.00	L11	N00°00'00"W	20.00
L12	E090°00'00"E	20.00	L12	E090°00'00"E	20.00	L12	E090°00'00"E	20.00	L12	E090°00'00"E	20.00
L13	N00°00'00"W	20.00	L13	N00°00'00"W	20.00	L13	N00°00'00"W	20.00	L13	N00°00'00"W	20.00
L14	E090°00'00"E	20.00	L14	E090°00'00"E	20.00	L14	E090°00'00"E	20.00	L14	E090°00'00"E	20.00
L15	N00°00'00"W	20.00	L15	N00°00'00"W	20.00	L15	N00°00'00"W	20.00	L15	N00°00'00"W	20.00
L16	E090°00'00"E	20.00	L16	E090°00'00"E	20.00	L16	E090°00'00"E	20.00	L16	E090°00'00"E	20.00
L17	N00°00'00"W	20.00	L17	N00°00'00"W	20.00	L17	N00°00'00"W	20.00	L17	N00°00'00"W	20.00
L18	E090°00'00"E	20.00	L18	E090°00'00"E	20.00	L18	E090°00'00"E	20.00	L18	E090°00'00"E	20.00
L19	N00°00'00"W	20.00	L19	N00°00'00"W	20.00	L19	N00°00'00"W	20.00	L19	N00°00'00"W	20.00
L20	E090°00'00"E	20.00	L20	E090°00'00"E	20.00	L20	E090°00'00"E	20.00	L20	E090°00'00"E	20.00
L21	N00°00'00"W	20.00	L21	N00°00'00"W	20.00	L21	N00°00'00"W	20.00	L21	N00°00'00"W	20.00
L22	E090°00'00"E	20.00	L22	E090°00'00"E	20.00	L22	E090°00'00"E	20.00	L22	E090°00'00"E	20.00
L23	N00°00'00"W	20.00	L23	N00°00'00"W	20.00	L23	N00°00'00"W	20.00	L23	N00°00'00"W	20.00
L24	E090°00'00"E	20.00	L24	E090°00'00"E	20.00	L24	E090°00'00"E	20.00	L24	E090°00'00"E	20.00
L25	N00°00'00"W	20.00	L25	N00°00'00"W	20.00	L25	N00°00'00"W	20.00	L25	N00°00'00"W	20.00
L26	E090°00'00"E	20.00	L26	E090°00'00"E	20.00	L26	E090°00'00"E	20.00	L26	E090°00'00"E	20.00
L27	N00°00'00"W	20.00	L27	N00°00'00"W	20.00	L27	N00°00'00"W	20.00	L27	N00°00'00"W	20.00
L28	E090°00'00"E	20.00	L28	E090°00'00"E	20.00	L28	E090°00'00"E	20.00	L28	E090°00'00"E	20.00
L29	N00°00'00"W	20.00	L29	N00°00'00"W	20.00	L29	N00°00'00"W	20.00	L29	N00°00'00"W	20.00
L30	E090°00'00"E	20.00	L30	E090°00'00"E	20.00	L30	E090°00'00"E	20.00	L30	E090°00'00"E	20.00



NOTES

1. THIS PLAN IS A PRELIMINARY PLAN AND IS SUBJECT TO THE CITY OF PRINCETON'S ZONING ORDINANCE AND THE CITY ENGINEER'S REVIEW AND APPROVAL.
2. EXCEPT AS SHOWN ON THIS FINAL PLAN, ALL UTILITIES SHALL BE LOCATED IN ACCORDANCE WITH THE CITY ENGINEER'S REVIEW AND APPROVAL.
3. ALL UTILITIES SHALL BE LOCATED IN ACCORDANCE WITH THE CITY ENGINEER'S REVIEW AND APPROVAL.
4. DEVELOPMENT STANDARDS OF THIS PLAN SHALL COMPLY WITH THE CITY OF PRINCETON ZONING ORDINANCE.
5. UTILITIES SHALL BE LOCATED IN ACCORDANCE WITH THE CITY ENGINEER'S REVIEW AND APPROVAL.
6. ALL CONCRETE SHALL BE CAST AND CURED IN ACCORDANCE WITH THE CITY ENGINEER'S REVIEW AND APPROVAL.
7. MINIMUM BUILDING SETBACK IS 20 FEET AND GARAGE SETBACK IS AT 20 FEET.

FINAL PLAT
WINCHESTER CROSSING
PHASE 7

BLOCK I, LOTS 11-20; BLOCK J, LOTS 2-41 & 42K-43K
 BLOCK K, LOTS 1-22; BLOCK L, LOTS 1-18;
 BLOCK M, LOTS 1-18; BLOCK N, LOTS 1-18;
 BLOCK O, LOTS 1-22 & 23; BLOCK P, LOTS 1-18;
 BLOCK Q, LOTS 1-22 & 23; BLOCK R, LOTS 1-18;
 BLOCK S, LOTS 1-22 & 23; BLOCK T, LOTS 1-18;
 BLOCK U, LOTS 1-22 & 23; BLOCK V, LOTS 1-18;
 BLOCK W, LOTS 1-22 & 23; BLOCK X, LOTS 1-18;
 BLOCK Y, LOTS 1-22 & 23; BLOCK Z, LOTS 1-18;
 BLOCK AA, LOTS 1-17, 2 & 31K; BLOCK BB, LOT 1-8 & 18; BLOCK CC, 1-9, & 11

ZONING DATA TABLE

DEVELOPMENT STANDARD	SF-2
MIN. LOT AREA	6,000 SF.
MIN. LOT WIDTH	50 FT.
MIN. LOT DEPTH	100 FT.
MIN. FRONT YARD	20 FT.
STREET SETBACK	15 FT.
MIN. SIDE YARD	7.5 FT.
MIN. REAR YARD	20 FT.

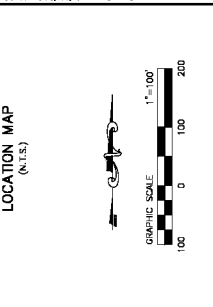
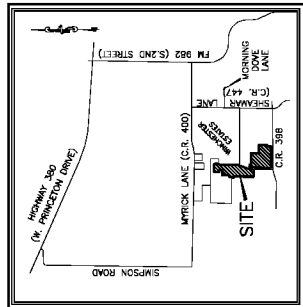
220 LOTS, 10 OPEN SPACES AND 1 RETAIL TRACT
 BEING 63,409 ACRES OUT OF THE
 HAROLD WRIGHT SURVEY, ABSTRACT NO. 957
 CITY OF PRINCETON,
 COLLIN COUNTY, TEXAS

LOTS DEVELOPED PER SF-2 STANDARDS

OWNER
 D.R. HORTON-TEXAS, LTD.
 4305 Miller Road, Suite A
 Rowlett, Texas 75088
 Contact: DONALD L. BOOTH

SURVEYOR/ENGINEER
 JBI PARTNERS, INC.
 2121 Wilshire Road, Suite 300
 Carrollton, Texas 75006
 Contact: Lee Radley, P.E.
 Reg. No. 1-146

March 18, 2021



NOTES:

1. "NOTES" BEING A PORTION OF THE ADDITION BY METES AND BOUNDS IS A VALIDATION OF CITY ORDINANCE AND STATE LAW AND IS SUBJECT TO THE CITY AND MUNICIPALITY OF DALLAS.
2. THE "NOTES" BEING A PORTION OF THE ADDITION BY METES AND BOUNDS IS A VALIDATION OF CITY ORDINANCE AND STATE LAW AND IS SUBJECT TO THE CITY AND MUNICIPALITY OF DALLAS.
3. ALL OPEN SPACE LOTS ARE DEDICATED TO AND SHALL BE OWNED & MAINTAINED BY THE HOMEOWNERS ASSOCIATION.
4. DEVELOPMENT STANDARDS OF THIS PLAT SHALL COMPLY WITH CITY OF FORT WORTH ZONING ORDINANCE AND CITY OF FORT WORTH SUBDIVISION ORDINANCE.
5. THE "NOTES" BEING A PORTION OF THE ADDITION BY METES AND BOUNDS IS A VALIDATION OF CITY ORDINANCE AND STATE LAW AND IS SUBJECT TO THE CITY AND MUNICIPALITY OF DALLAS.
6. ALL OWNERS NOT LABELED ARE ONE-HALF INCH IRON ROD SET WITH A YELLOW CAP STAMPED "SF" UNLESS NOTED OTHERWISE.
7. MINIMUM BUILDING SETBACK IS 20 FEET AND GARAGE SETBACK IS 20 FEET.

FINAL PLAT

WINCHESTER CROSSING PHASE 7

BLOCK 1, LOTS 11-20; BLOCK 2, LOTS 2-41 & 42K-43K
 BLOCK 3, LOTS 1-18; BLOCK 4, LOTS 1-18;
 BLOCK 5, LOTS 1-23 & 24; BLOCK 6, LOTS 1-7;
 BLOCK 7, LOTS 1-23 & 24; BLOCK 8, LOTS 1-17, 2
 & 31K; BLOCK 9, LOT 1-8 & 16; BLOCK CC, 1-9, & 1C

220 LOTS, 10 OPEN SPACES AND 1 RETAIL TRACT
 BEING 63,409 ACRES OUT OF THE
 HARDIN WRIGHT SURVEY, ABSTRACT NO. 957
 CITY OF FORT WORTH,
 COLLIN COUNTY, TEXAS

LOTS DEVELOPED PER SF-2 STANDARDS

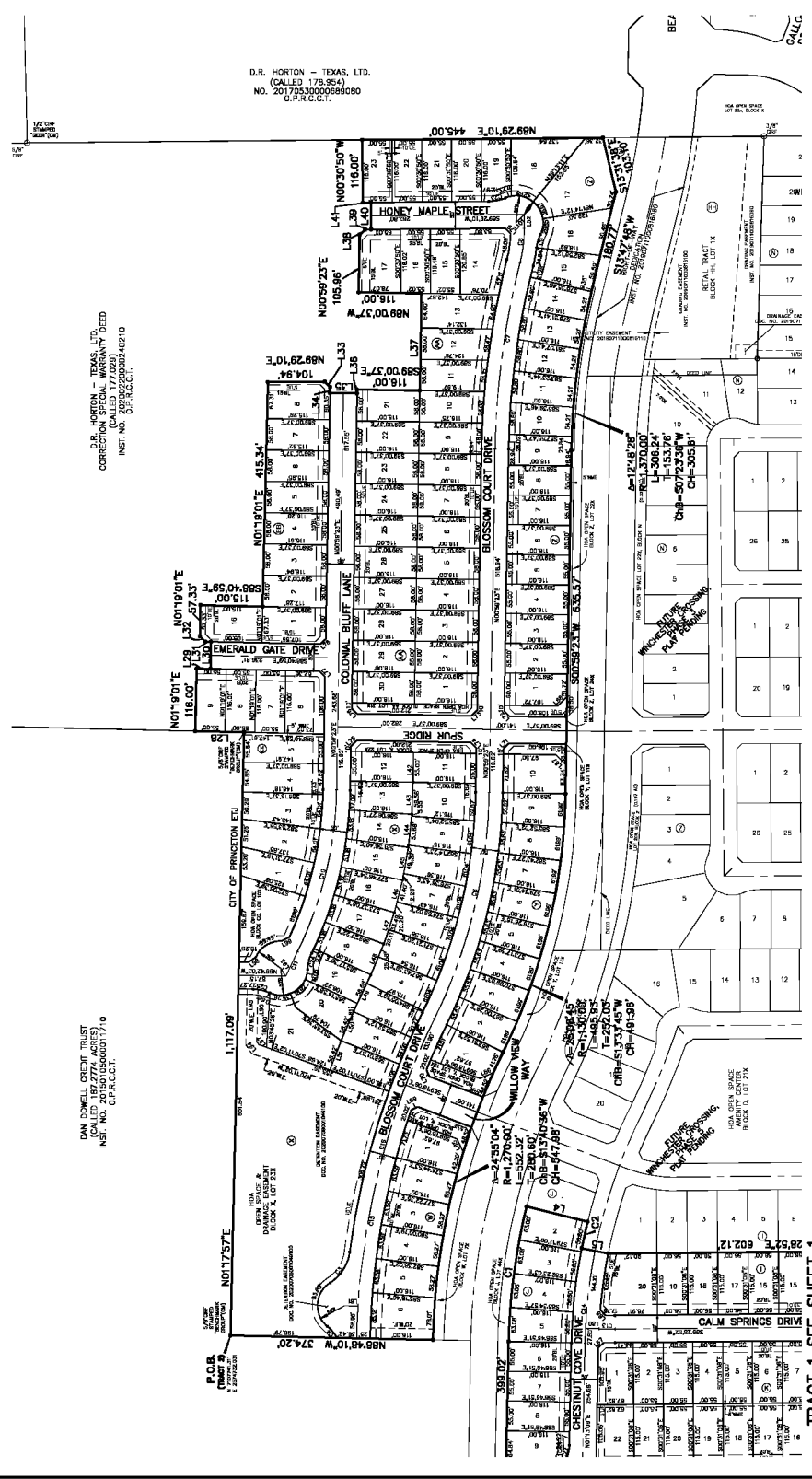
OWNER

D.R. HORTON-TEXAS, LTD.
 4306 Miller Road, Suite A
 Rowlett, Texas 75088
 Contact: DORIS L. Booth

JBI PARTNERS, INC.
 2121 Mabey Road, Suite 300
 Carrollton, Texas 75006
 Contact: Les Radley, P.E.
 Int. No. 1-4-06

SURVEYOR/ENGINEER

March 18, 2021



ZONING DATA TABLE

DEVELOPER	STANDARDS	MIN. LOT AREA	MIN. LOT WIDTH	MIN. LOT DEPTH	MIN. FRONT YARD	MIN. SIDE SETBACK	MIN. REAR YARD
SF-2		8,000 S.F.	55 FT.	100 FT.	20 FT.	15 FT.	20 FT.

LEGEND

PCB POINT OF BEGINNING
 POB POINT OF BEGINNING
 R.O.W. RIGHT-OF-WAY
 N.W. NORTH-WEST
 S.W. SOUTH-WEST
 E.W. EAST
 S.E. SOUTH-EAST
 S.S. SOUTH-SOUTH

LOT DATA TABLE

LOT NO.	AREA	WIDTH	DEPTH	PERCENTAGE	AREA	WIDTH	DEPTH	PERCENTAGE
L1	10025000	30.00	115.00	3.41	3450.00	30.00	115.00	3.41
L2	10025000	30.00	115.00	3.41	3450.00	30.00	115.00	3.41
L3	10025000	30.00	115.00	3.41	3450.00	30.00	115.00	3.41
L4	10025000	30.00	115.00	3.41	3450.00	30.00	115.00	3.41
L5	10025000	30.00	115.00	3.41	3450.00	30.00	115.00	3.41
L6	10025000	30.00	115.00	3.41	3450.00	30.00	115.00	3.41
L7	10025000	30.00	115.00	3.41	3450.00	30.00	115.00	3.41
L8	10025000	30.00	115.00	3.41	3450.00	30.00	115.00	3.41
L9	10025000	30.00	115.00	3.41	3450.00	30.00	115.00	3.41
L10	10025000	30.00	115.00	3.41	3450.00	30.00	115.00	3.41
L11	10025000	30.00	115.00	3.41	3450.00	30.00	115.00	3.41
L12	10025000	30.00	115.00	3.41	3450.00	30.00	115.00	3.41
L13	10025000	30.00	115.00	3.41	3450.00	30.00	115.00	3.41
L14	10025000	30.00	115.00	3.41	3450.00	30.00	115.00	3.41
L15	10025000	30.00	115.00	3.41	3450.00	30.00	115.00	3.41
L16	10025000	30.00	115.00	3.41	3450.00	30.00	115.00	3.41
L17	10025000	30.00	115.00	3.41	3450.00	30.00	115.00	3.41
L18	10025000	30.00	115.00	3.41	3450.00	30.00	115.00	3.41
L19	10025000	30.00	115.00	3.41	3450.00	30.00	115.00	3.41
L20	10025000	30.00	115.00	3.41	3450.00	30.00	115.00	3.41
L21	10025000	30.00	115.00	3.41	3450.00	30.00	115.00	3.41
L22	10025000	30.00	115.00	3.41	3450.00	30.00	115.00	3.41
L23	10025000	30.00	115.00	3.41	3450.00	30.00	115.00	3.41
L24	10025000	30.00	115.00	3.41	3450.00	30.00	115.00	3.41
L25	10025000	30.00	115.00	3.41	3450.00	30.00	115.00	3.41
L26	10025000	30.00	115.00	3.41	3450.00	30.00	115.00	3.41
L27	10025000	30.00	115.00	3.41	3450.00	30.00	115.00	3.41
L28	10025000	30.00	115.00	3.41	3450.00	30.00	115.00	3.41
L29	10025000	30.00	115.00	3.41	3450.00	30.00	115.00	3.41
L30	10025000	30.00	115.00	3.41	3450.00	30.00	115.00	3.41
L31	10025000	30.00	115.00	3.41	3450.00	30.00	115.00	3.41
L32	10025000	30.00	115.00	3.41	3450.00	30.00	115.00	3.41
L33	10025000	30.00	115.00	3.41	3450.00	30.00	115.00	3.41
L34	10025000	30.00	115.00	3.41	3450.00	30.00	115.00	3.41
L35	10025000	30.00	115.00	3.41	3450.00	30.00	115.00	3.41
L36	10025000	30.00	115.00	3.41	3450.00	30.00	115.00	3.41
L37	10025000	30.00	115.00	3.41	3450.00	30.00	115.00	3.41
L38	10025000	30.00	115.00	3.41	3450.00	30.00	115.00	3.41
L39	10025000	30.00	115.00	3.41	3450.00	30.00	115.00	3.41
L40	10025000	30.00	115.00	3.41	3450.00	30.00	115.00	3.41
L41	10025000	30.00	115.00	3.41	3450.00	30.00	115.00	3.41
L42	10025000	30.00	115.00	3.41	3450.00	30.00	115.00	3.41
L43	10025000	30.00	115.00	3.41	3450.00	30.00	115.00	3.41
L44	10025000	30.00	115.00	3.41	3450.00	30.00	115.00	3.41
L45	10025000	30.00	115.00	3.41	3450.00	30.00	115.00	3.41
L46	10025000	30.00	115.00	3.41	3450.00	30.00	115.00	3.41
L47	10025000	30.00	115.00	3.41	3450.00	30.00	115.00	3.41
L48	10025000	30.00	115.00	3.41	3450.00	30.00	115.00	3.41
L49	10025000	30.00	115.00	3.41	3450.00	30.00	115.00	3.41
L50	10025000	30.00	115.00	3.41	3450.00	30.00	115.00	3.41
L51	10025000	30.00	115.00	3.41	3450.00	30.00	115.00	3.41
L52	10025000	30.00	115.00	3.41	3450.00	30.00	115.00	3.41
L53	10025000	30.00	115.00	3.41	3450.00	30.00	115.00	3.41
L54	10025000	30.00	115.00	3.41	3450.00	30.00	115.00	3.41
L55	10025000	30.00	115.00	3.41	3450.00	30.00	115.00	3.41
L56	10025000	30.00	115.00	3.41	3450.00	30.00	115.00	3.41
L57	10025000	30.00	115.00	3.41	3450.00	30.00	115.00	3.41
L58	10025000	30.00	115.00	3.41	3450.00	30.00	115.00	3.41
L59	10025000	30.00	115.00	3.41	3450.00	30.00	115.00	3.41
L60	10025000	30.00	115.00	3.41	3450.00	30.00	115.00	3.41
L61	10025000	30.00	115.00	3.41	3450.00	30.00	115.00	3.41
L62	10025000	30.00	115.00	3.41	3450.00	30.00	115.00	3.41
L63	10025000	30.00	115.00	3.41	3450.00	30.00	115.00	3.41
L64	10025000	30.00	115.00	3.41	3450.00	30.00	115.00	3.41
L65	10025000	30.00	115.00	3.41	3450.00	30.00	115.00	3.41
L66	10025000	30.00	115.00	3.41	3450.00	30.00	115.00	3.41
L67	10025000	30.00	115.00	3.41	3450.00	30.00	115.00	3.41
L68	10025000	30.00	115.00	3.41	3450.00	30.00	115.00	3.41
L69	10025000	30.00	115.00	3.41	3450.00	30.00	115.00	3.41
L70	10025000	30.00	115.00	3.41	3450.00	30.00	115.00	3.41
L71	10025000	30.00	115.00	3.41	3450.00	30.00	115.00	3.41
L72	10025000	30.00	115.00	3.41	3450.00	30.00	115.00	3.41
L73	10025000	30.00	115.00	3.41	3450.00	30.00	115.00	3.41
L74	10025000	30.00	115.00	3.41	3450.00	30.00	115.00	3.41
L75	10025000	30.00	115.00	3.41	3450.00	30.00	115.00	3.41
L76	10025000	30.00	115.00	3.41	3450.00	30.00	115.00	3.41
L77	10025000	30.00	115.00	3.41	3450.00	30.00	115.00	3.41
L78	10025000	30.00	115.00	3.41	3450.00	30.00	115.00	3.41
L79	10025000	30.00	115.00	3.41	3450.00	30.00	115.00	3.41
L80	10025000	30.00	115.00	3.41	3450.00	30.00	115.00	3.41
L81	10025000	30.00	115.00	3.41	3450.00	30.00	115.00	3.41
L82	10025000	30.00	115.00	3.41	3450.00	30.00	115.00	3.41
L83	10025000	30.00	115.00	3.41	3450.00	30.00	115.00	3.41
L84	10025000	30.00	115.00	3.41	3450.00	30.00	115.00	3.41
L85	10025000	30.00	115.00	3.41	3450.00	30.00	115.00	3.41
L86	10025000	30.00	115.00	3.41	3450.00	30.00	115.00	3.41
L87	10025000	30.00	115.00	3.41	3450.00	30.00	115.00	3.41
L88	10025000	30.00	115.00	3.41	3450.00	30.00	115.00	3.41
L89	10025000	30.00	115.00	3.41	3450.00	30.00	115.00	3.41
L90	10025000	30.00	115.00	3.41	3450.00	30.00	115.00	3.41
L91	10025000	30.00	115.00	3.41	3450.00	30.00	115.00	3.41
L92	10025000	30.00	115.00	3.41	3450.00	30.00	115.00	3.41
L93	10025000	30.00	115.00	3.41	3450.00	30.00	115.00	3.41
L94	10025000	30.00	115.00	3.41	3450.00	30.00	115.00	3.41
L95	10025000	30.00	115.00	3.41	3450.00	30.00	115.00	3.41
L96	10025000	30.00	115.00	3.41	3450.00	30.00	115.00	3.41
L97	10025000	30.00	115.00	3.41	3450.00	30.00	115.00	3.41
L98	10025000	30.00	115.00	3.41	3450.00	30.00	115.00	3.41
L99	10025000	30.00	115.00	3.41	3450.00	30.00	115.00	3.41
L100	10025000	30.00	115.00	3.41	3450.00	30.00	115.00	3.41

TRACT 1 SEE SHEET 1

NO.	LENGTH	B.E.A.	B.E.S.	B.E.W.	B.E.N.	B.E.S.	B.E.W.	B.E.N.	AREA	PERCENTAGE	COORD	COORD
C1	692.32	0270727	100.00	100.00	0270727	100.00	100.00	0270727	474.68	68.57	100.00	100.00
C2	692.32	0270727	100.00	100.00	0270727	100.00	100.00	0270727	474.68	68.57	100.00	100.00
C3	692.32	0270727	100.00	100.00	0270727	100.00	100.00	0270727	474.68	68.57	100.00	100.00
C4	692.32	0270727	100.00	100.00	0270727	100.00	100.00	0270727	474.68	68.57	100.00	100.0

APPENDIX D
PID ASSESSMENT NOTICE

PID Assessment Notice

NOTICE OF OBLIGATION TO PAY PUBLIC IMPROVEMENT DISTRICT ASSESSMENT TO
CITY OF PRINCETON, TEXAS
CONCERNING THE FOLLOWING PROPERTY

[insert property address]

As the purchaser of the real property described above, you are obligated to pay assessments to the City of Princeton, Texas (the "City"), for the costs of a portion of a public improvement or services project (the "Authorized Improvements") undertaken for the benefit of the property within the Winchester No. 2 Public Improvement District (the "District") created under Subchapter A, Chapter 372, Local Government Code.

AN ASSESSMENT HAS BEEN LEVIED AGAINST YOUR PROPERTY FOR THE AUTHORIZED IMPROVEMENTS, WHICH MAY BE PAID IN FULL AT ANY TIME. IF THE ASSESSMENT IS NOT PAID IN FULL, IT WILL BE DUE AND PAYABLE IN ANNUAL INSTALLMENTS THAT WILL VARY FROM YEAR TO YEAR DEPENDING ON THE AMOUNT OF INTEREST PAID, COLLECTION COSTS, ADMINISTRATIVE COSTS, AND DELINQUENCY COSTS.

The exact amount of the assessment may be obtained from the City. The exact amount of each annual installment will be approved each year by the City Council in the Annual Service Plan Update for the District. More information about the assessments, including the amounts and due dates, may be obtained from the City or MuniCap, Inc., the District Administrator for the City, located at 600 E. John Carpenter Fwy, Suite 150, Irving, Texas 75062 and available by telephone at (469) 490-2800 or (866) 648-8482 (toll free) and email at txpid@municap.com.

Your failure to pay any assessment or any annual installment may result in penalties and interest being added to what you owe or in a lien on and the foreclosure of your property.

Date: _____

Signature of Seller

Signature of Seller

The undersigned purchaser acknowledges receipt of this notice before the effective date of a binding contract for the purchase of the real property at the address described above.

Date: _____

Signature of Purchaser

Signature of Purchaser

STATE OF TEXAS §

§

COUNTY OF _____ §

The foregoing instrument was acknowledged before me by _____ and _____, known to me to be the person(s) whose name(s) is/are subscribed to the foregoing instrument, and acknowledged to me that he or she executed the same for the purposes therein expressed, in the capacity stated and as the act and deed of the above-referenced entities as an authorized signatory of said entities.

Given under my hand and seal of office on this _____, 20__.

Notary Public, State of Texas

**Collin County
Honorable Stacey Kemp
Collin County Clerk**

Instrument Number: 2025000123956

eRecording - Real Property

MISCELLANEOUS

Recorded On: September 29, 2025 09:21 AM

Number of Pages: 75

" Examined and Charged as Follows: "

Total Recording: \$317.00

******* THIS PAGE IS PART OF THE INSTRUMENT *******

Any provision herein which restricts the Sale, Rental or use of the described REAL PROPERTY because of color or race is invalid and unenforceable under federal law.

File Information:

Document Number: 2025000123956
Receipt Number: 20250929000039
Recorded Date/Time: September 29, 2025 09:21 AM
User: Clarke B
Station: Workstation cck015

Record and Return To:

Simplifile



**STATE OF TEXAS
COUNTY OF COLLIN**

I hereby certify that this Instrument was FILED In the File Number sequence on the date/time printed hereon, and was duly RECORDED in the Official Public Records of Collin County, Texas.

Honorable Stacey Kemp
Collin County Clerk
Collin County, TX